



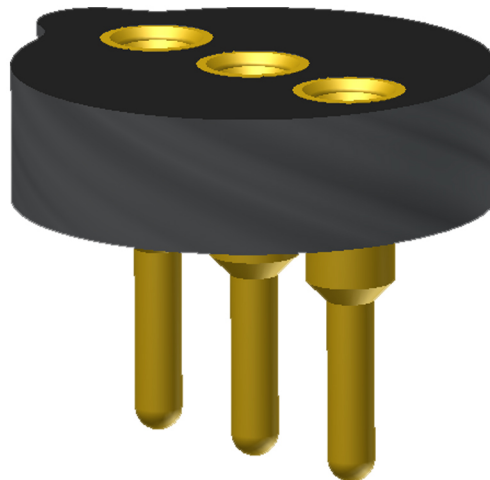
ANDON
INTERCONNECTION SPECIALISTS



RoHS Compliant
ISO 9001
Certified

**HIGH RELIABILITY
OPTOELECTRONIC SOCKETS FOR
FIGARO SENSOR**

FIGARO



Featuring Andon's Unique Senstac™ Contact

FIGARO SENSOR® is a trade mark of FIGARO SENSOR

Figaro Sensor						
Figaro Sensor Model Number	Andon Part Number Replace "XXX" with Terminal Type	Terminal Type		Pin Ø [in]	Figure Number	Page Number
		Thru-Hole	Surface Mount			
SK-25	R530-0403-02N-XXX-R27-L14	436P55	440P55	.060	4	2
TGS 2180	R200-SP03-01T-XXX-R27-L14	295V	439V	.030	1	1
TGS 2442	R200-0404-01T-XXX-R27-L14	01S	93S	.018	5	2
TGS 2444	R200-0404-01T-XXX-R27-L14	01S	93S	.018	5	2
TGS 2600	R200-0404-01T-XXX-R27-L14	01S	93S	.018	5	2
TGS 2602	R200-0404-01T-XXX-R27-L14	01S	93S	.018	5	2
TGS 2610	R200-0404-01T-XXX-R27-L14	01S	93S	.018	5	2
TGS 2611	R200-0404-01T-XXX-R27-L14	01S	93S	.018	5	2
TGS 2612	R200-0404-01T-XXX-R27-L14	01S	93S	.018	5	2
TGS 2620	R200-0404-01T-XXX-R27-L14	01S	93S	.018	5	2
TGS 3830	R200-SP03-01T-XXX-R27-L14	295V	439V	.030	1	1
TGS 3870	R200-SP03-01T-XXX-R27-L14	295V	439V	.030	1	1
TGS 4160	R375-0806-01T-XXX-R27-L14	433E	285E	.040	3	2
TGS 4161	R200-0404-01T-XXX-R27-L14	01S	93S	.018	5	2
TGS 6810	R240-SP04-01T-XXX-R27-L14	295V	439V	.030	2	1
TGS 6812	R240-SP04-01T-XXX-R27-L14	295V	439V	.030	2	1
TGS 800	R375-0806-01T-XXX-R27-L14	433E	285E	.040	3	2
TGS 813	R375-0806-01T-XXX-R27-L14	433E	285E	.040	3	2
TGS 821	R375-0806-01T-XXX-R27-L14	433E	285E	.040	3	2
TGS 822	R375-0806-01T-XXX-R27-L14	433E	285E	.040	3	2
TGS 825	R375-0806-01T-XXX-R27-L14	433E	285E	.040	3	2
TGS 826	R375-0806-01T-XXX-R27-L14	433E	285E	.040	3	2
TGS 830	R375-0806-01T-XXX-R27-L14	433E	285E	.040	3	2
TGS 831	R375-0806-01T-XXX-R27-L14	433E	285E	.040	3	2
TGS 832	R375-0806-01T-XXX-R27-L14	433E	285E	.040	3	2
TGS 842	R375-0806-01T-XXX-R27-L14	433E	285E	.040	3	2
TGS2603	R200-0404-01T-XXX-R27-L14	01S	93S	.018	5	2
TGS8410	R200-0404-01T-XXX-R27-L14	01S	93S	.018	5	2

See last page for other mounting types including low profile options.
Heat sink socket available to reduce heat and noise. Contact Andon for details.

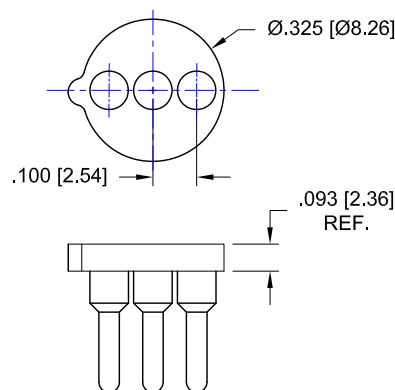


Fig. 1

Thru-hole: R200-SP03-01T-295V-R27-L14
Surface Mount: R200-SP03-01T-439V-R27-L14

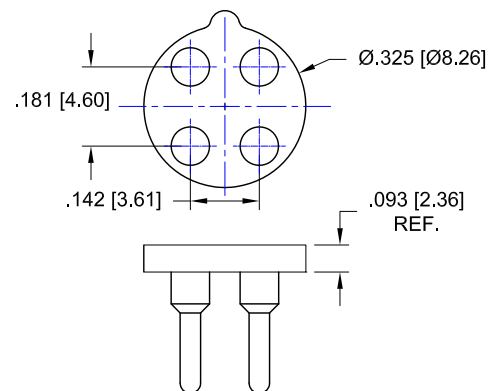


Fig. 2

Thru-hole: R240-SP04-01T-295V-R27-L14
Surface Mount: R240-SP04-01T-439V-R27-L14

Figaro Sensor Continued

Top View Shown
Units: in [mm]

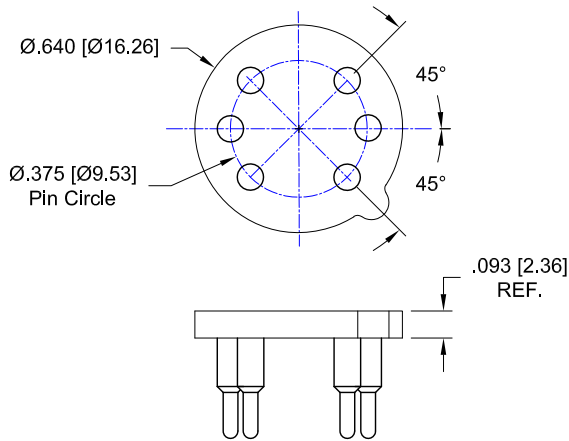


Fig. 3

Thru-hole: R375-0806-01T-**433E**-R27-L14
Surface Mount: R375-0806-01T-**285E**-R27-L14

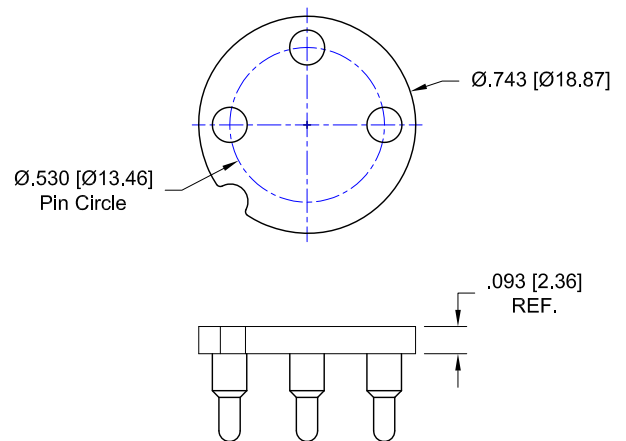


Fig. 4

Thru-hole: R530-0403-02N-**436P55**-R27-L14
Surface Mount: R530-0403-02N-**440P55**-R27-L14

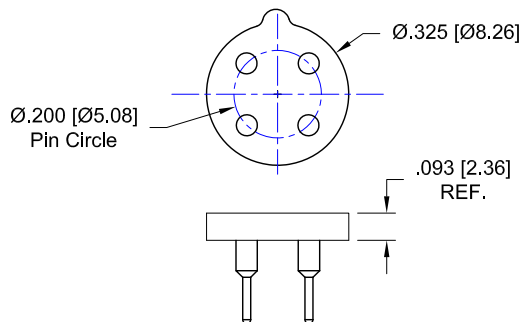


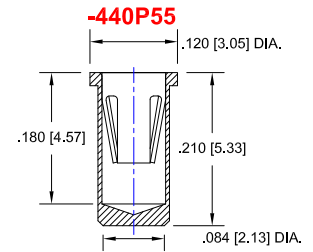
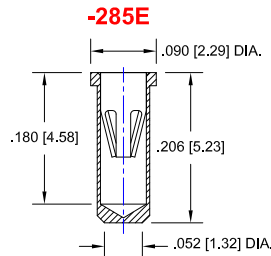
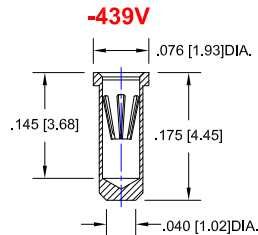
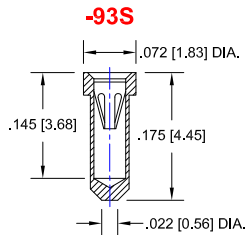
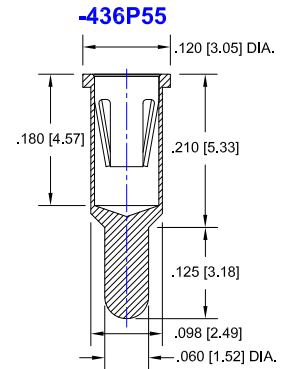
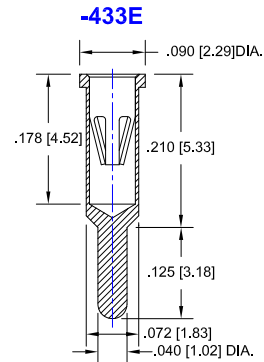
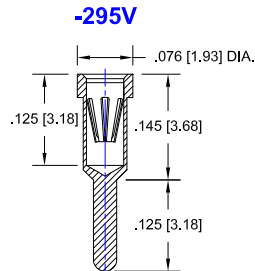
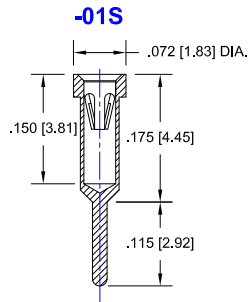
Fig. 5

Thru-hole: R200-0404-01T-**01S**-R27-L14
Surface Mount: R200-0404-01T-**93S**-R27-L14

Figaro Sensor *Continued*

Socket Terminal Details

Cross Section View Shown Units: in [mm]



Technical Information

Material:

Insulator: Hi-Temp UL 94V-O
Terminal: Brass, per ASTM-B16
Contact: BeCu, Per ASTM-B194

Plating: RoHS COMPLIANT

R17 TERMINAL: MATTE TIN / CONTACT: GOLD

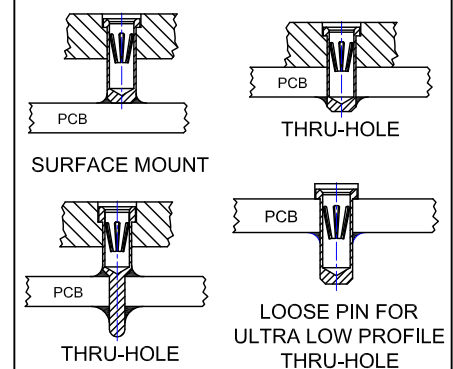
R27 TERMINAL: GOLD / CONTACT: GOLD

R32 TERMINAL: MATTE TIN / CONTACT: TIN
OTHER PLATINGS AVAILABLE

Terminal Acceptance and Forces

Thru Hole Terminals				Surface Mount Terminals			
Thru Hole Terminal	Accepts Pin Diameter	Insertion Force	Withdrawal Force	Surface Mount Terminal	Accepts Pin Diameter	Insertion Force	Withdrawal Force
-01S	Ø.018 [Ø0.46]	9.0 oz Avg.	2.0 oz Min	-93S	Ø.018 [Ø0.46]	9.0 oz Avg.	2.0 oz Min
-295V	Ø.030 [Ø0.76]	13.2 oz Max	3.5 oz Min	-439V	Ø.030 [Ø0.76]	13.2 oz Max	3.5 oz Min
-433E	Ø.040 [Ø1.02]	36.0 oz Max	3.9 oz Min	-285E	Ø.040 [Ø1.02]	36.0 oz Max	3.9 oz Min
-436P55	Ø.060 [Ø1.52]	15.5 oz Max	2.1 oz Min	-440P55	Ø.060 [Ø1.52]	15.5 oz Max	2.1 oz Min

MOUNTING OPTIONS



©Copyright 2017 Andon Electronics Corporation. All Rights Reserved. This material is protected under US and other copyrights and may not be copied, sold, or redistributed in any form without written permission of Andon Electronics Corporation. Copyrights and trademarks are property of their respective companies. We reserve the right to change specifications without notice. Andon makes no warranty, expressed or implied, as to the suitability of the sockets for the intended purpose.

"ANDON PROPRIETARY INFORMATION"

RoHS Compliant

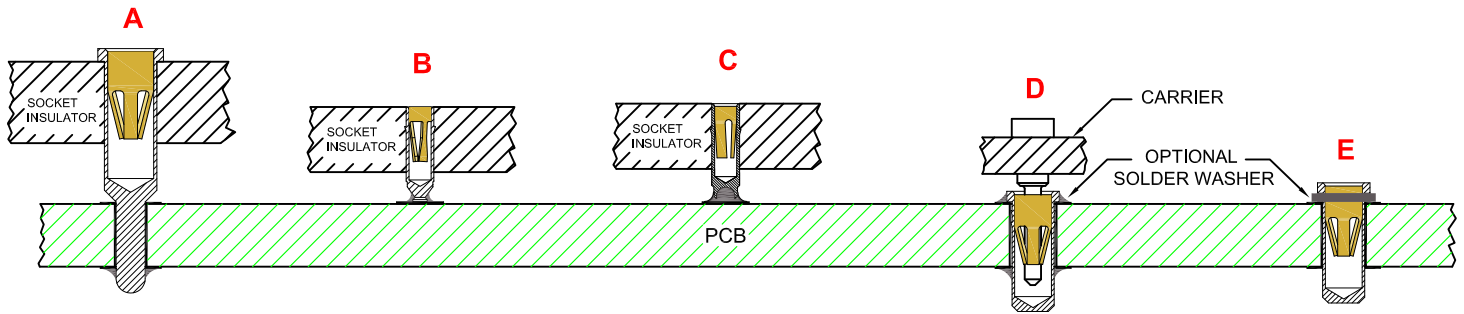
*Sockets are not drawn to scale Figaro Sensor 05/30/2017

ANDON ELECTRONICS CORPORATION
4 Court Drive, Lincoln RI 02865, United States of America

www.andonelectronics.com or www.andonelect.com

Phone 401-333-0388 Fax 401-333-0287

Email Info@andonelect.com



**THRU-HOLE
SOCKET**

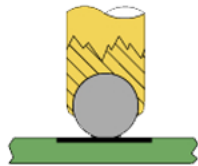
SMD-SOCKET

**SMD
ROLLERBALL®
SOCKET
(PATENTED)**

**REMOVABLE
CARRIER
WITH ULTRA-LOW
PROFILE PIN SOCKETS**

**INDIVIDUAL
ULTRA-LOW PROFILE
PIN SOCKETS
(BEFORE SOLDERING)**

**ROLLERBALL®
SOCKET**



BEFORE SOLDERING

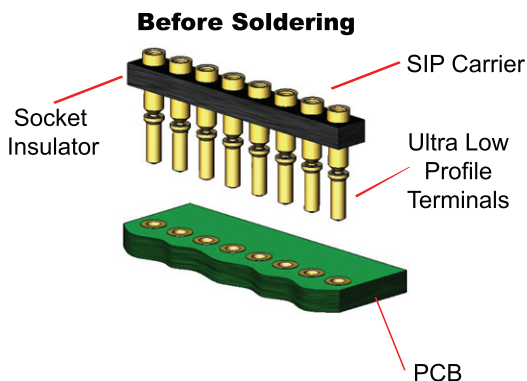
**ROLLERBALL®
SOCKET**



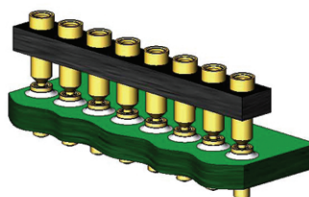
AFTER SOLDERING

A more reliable solder joint for surface mount applications !

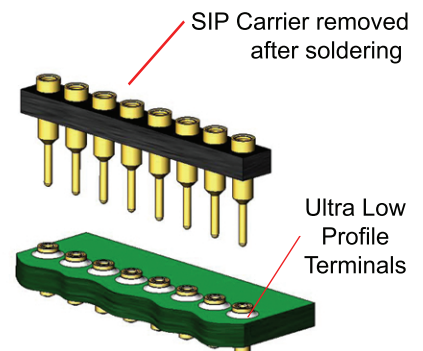
ULTRA LOW PROFILE SIP/DIP/PGA CARRIER ASSEMBLY See 'D' above



During Soldering



After Soldering



Available with or without solder washer