

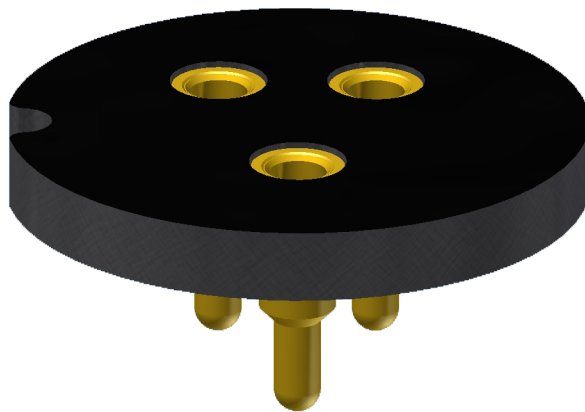


ANDON
INTERCONNECTION SPECIALISTS



RoHS Compliant
ISO 9001
Certified

HIGH RELIABILITY OPTOELECTRONIC SOCKETS FOR



Featuring Andon's Unique Senstac™ Contact

ION SCIENCE is a trade mark of ION SCIENCE

ION SCIENCE						
Model Number	Andon Part Number Replace "XXX" with Terminal Type	Terminal Type		Pin Ø [in]	Figure Number	Page Number
		Thru-Hole	Surface Mount			
PPB MINI PID2	R300-SP03-02N-XXX-R27-L14	436P55	440P55	.060	1	1
PPM MINI PID2	R300-SP03-02N-XXX-R27-L14	436P55	440P55	.060	1	1
10EV MINI PID2	R300-SP03-02N-XXX-R27-L14	436P55	440P55	.060	1	1

See last page for other mounting types including low profile options.
Heat sink socket available to reduce heat and noise. Contact Andon for details.

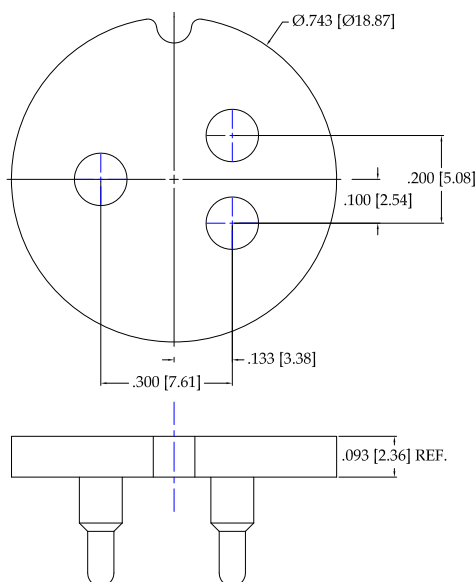
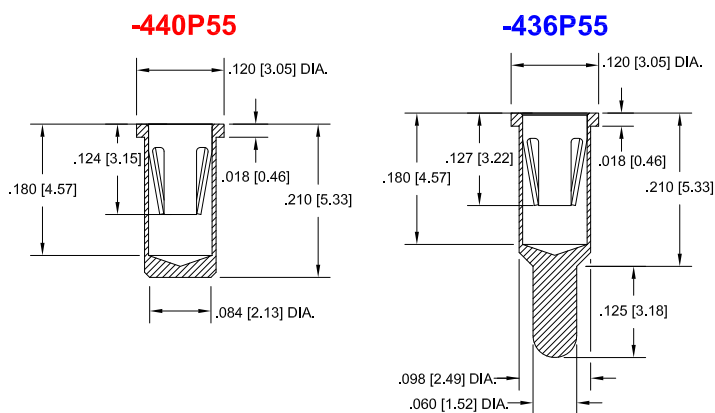


Fig. 1

Thru-Hole: R300-SP03-02N-436P55-R27-L14
Surface Mount: R300-SP03-02N-440P55-R27-L14

Socket Terminal Details Cross Section View Shown Units: in [mm]



Technical Information

Material:

Insulator: Hi-Temp UL 94V-O
Terminal: Brass, per ASTM-B16
Contact: BeCu, Per ASTM-B194

Plating: RoHS COMPLIANT

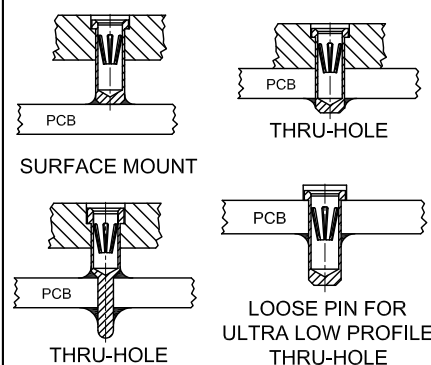
R27 TERMINAL: GOLD / CONTACT: GOLD

R17 TERMINAL: TIN / CONTACT: GOLD

OTHER PLATINGS AVAILABLE

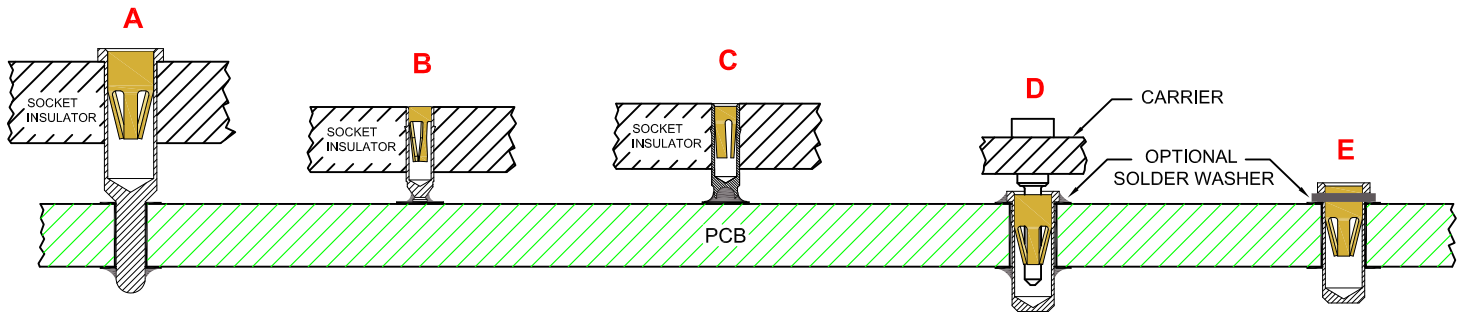
Terminal Acceptance and Forces							
Thru Hole Terminals				Surface Mount Terminals			
Thru Hole Terminal	Accepts Pin Diameter	Insertion Force	Withdrawal Force	Surface Mount Terminal	Accepts Pin Diameter	Insertion Force	Withdrawal Force
-436P55	Ø.060 [Ø1.52]	15.5 oz Avg.	2.1 oz Min	-440P55	Ø.060 [Ø1.52]	15.5 oz Avg.	2.1 oz Min

MOUNTING OPTIONS



"ANDON PROPRIETARY INFORMATION"
RoHS Compliant

*Sockets are not drawn to scale ION SCIENCE 7/12/2016



**THRU-HOLE
SOCKET**

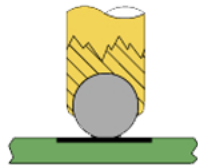
SMD-SOCKET

**SMD
ROLLERBALL®
SOCKET
(PATENTED)**

**REMOVABLE
CARRIER
WITH ULTRA-LOW
PROFILE PIN SOCKETS**

**INDIVIDUAL
ULTRA-LOW PROFILE
PIN SOCKETS
(BEFORE SOLDERING)**

**ROLLERBALL®
SOCKET**



BEFORE SOLDERING

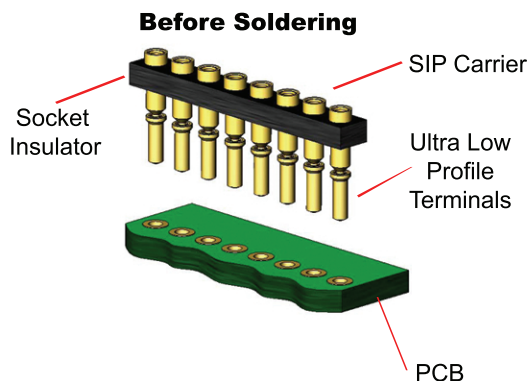
**ROLLERBALL®
SOCKET**



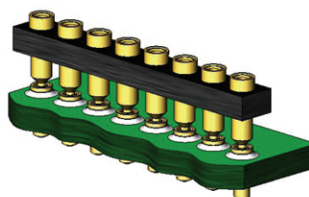
AFTER SOLDERING

A more reliable solder joint for surface mount applications !

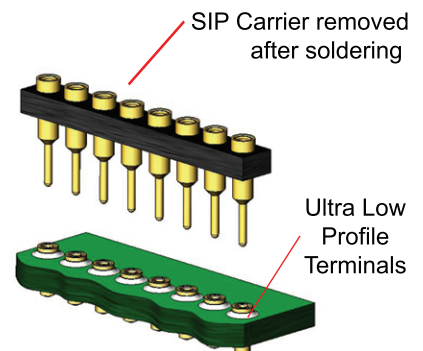
ULTRA LOW PROFILE SIP/DIP/PGA CARRIER ASSEMBLY See 'D' above



During Soldering



After Soldering



Available with or without solder washer