



RoHS Compliant
ISO 9001
Certified

GAS SENSOR SOCKETS FOR



***Largest Line of High Reliability Sensor Sockets
with Andon's Unique Senstac™ Contact***

www.andonelect.com or www.andonelectronics.com

SolidsenSe Gas Sensors is a Copyright © of



Gas Sensor Sockets

At Andon Electronics, we provide interconnection components that help companies to cost effectively protect, assemble, test and replace their semiconductor devices.

Risks

- **Electrolytes:** Leakage can cause irritation of the eyes and skin.
Inhalation of the vapors can affect the lungs.
Corrosion of the surrounding area, resulting in damage to equipment.
- **Temperature:** High temperature RoHS lead free solders can seriously damage the sensors.
Gas Sensors cannot be convection soldered due to the high soldering temperatures, which can completely destroy the gas sensor.
- **Solvents:** Production line exposure to solvents can damage gas sensors.
Organic vapor can degrade the plastic body of the sensor, create false base lines and block sensing electrodes.

Solution

Socket Contacts developed by Andon Electronics Corporation over the past forty years for the Military and Aerospace industries, are produced in-house for a variety of pin diameters.

- Solder Andon sockets on the PCB and plug-in the Sensor after all other assembly and testing.
- Sockets available for all brands of sensors.
- Footprints are the same as the Sensor.
- Various terminal and socket sizes available: Thru-hole, Surface Mount and Low Profile Carrier Socket.

Improved Reliability

- Complete rework and testing without the sensor reduces risk of damage and loss.
- Enables easy field replacements and upgrades of sensors.
- Improve cash flow by volume PCB assembly cost savings; soldering Andon Sockets and buying Sensors as needed.

SolidSenSe Gas Sensor Sockets						
SolidSenSe Gas Sensor Sockets Model Number	Andon Part Number Replace "XXX" with Terminal Type	Terminal Type		Pin Ø [in]	Figure Number	Page Number
		Thru-Hole	Surface Mount			
4 Series	R530-0403-02N-XXX-R27-L14	436P55	440P55	.060	5	2
4 Series Combustible	R300-SP03-02T-XXX-R27-L14	436P55	440P55	.060	3	1
7 Series	R670-0804-02N-XXX-R27-L14	433E	285E	.040	6	2
IR Series	R420-SP05-04T-XXX-R27-L14	436P55	440P55	.060	4	2
Micro Series	405-03-XXX-R27-L14	01S	93S	.018	1	1
Micro+ Series	C10-42108-06-XXX-R27-L14	01S	93S	.018	2	1

Top View Shown
Units: in [mm]

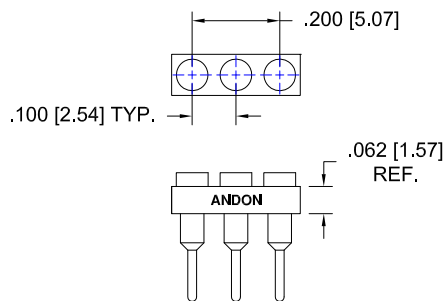


Fig. 1

Thru-Hole: 405-03-01S-R27-L14
Surface Mount: 405-03-93S-R27-L14

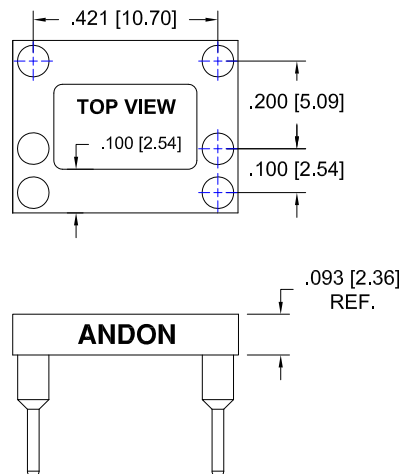
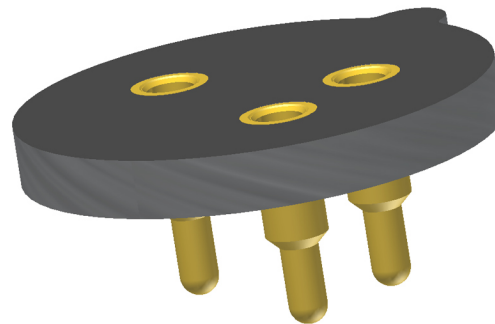


Fig. 2

Thru-Hole: C10-42108-06-01S-R27-L14
Surface Mount: C10-42108-06-93S-R27-L14

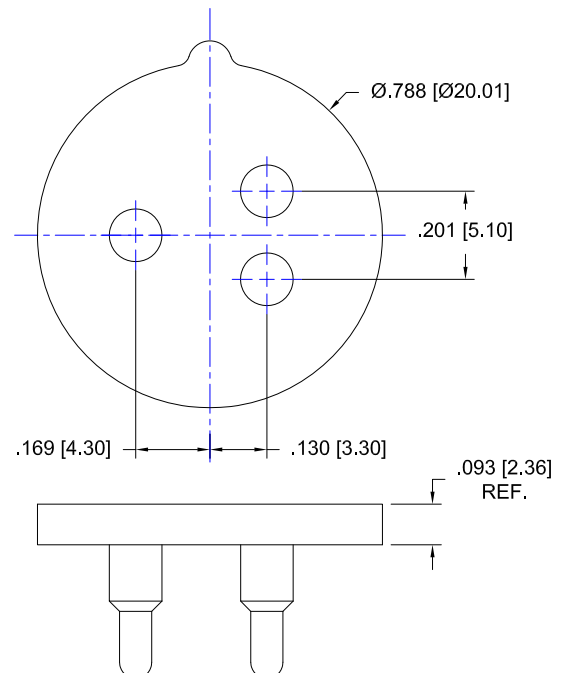


Fig. 3

Thru-Hole: R300-SP03-02T-436P55-R27-L14
Surface Mount: R300-SP03-02T-440P55-R27-L14

SolidsenSe Gas Sensor *Continued*

Top View Shown

Units: in [mm]

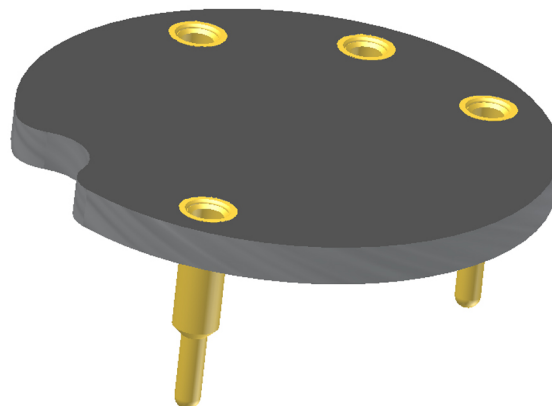
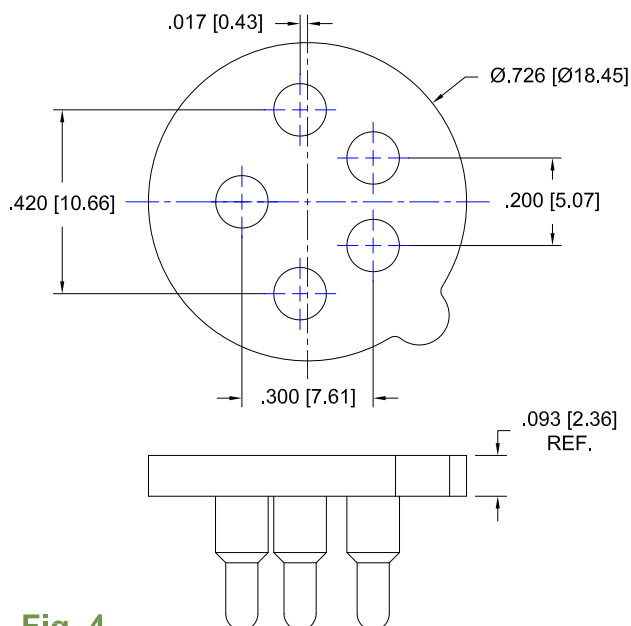


Fig. 4

Thru-Hole: R420-SP05-04T-436P55-R27-L14

Surface Mount: R420-SP05-04T-440P55-R27-L14

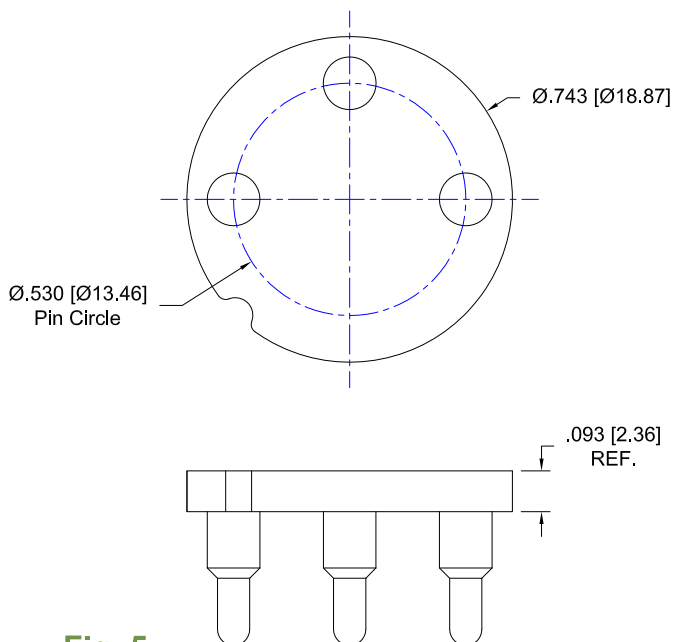


Fig. 5

Thru-Hole: R530-0403-02N-436P55-R27-L14

Surface Mount: R530-0403-02N-440P55-R27-L14

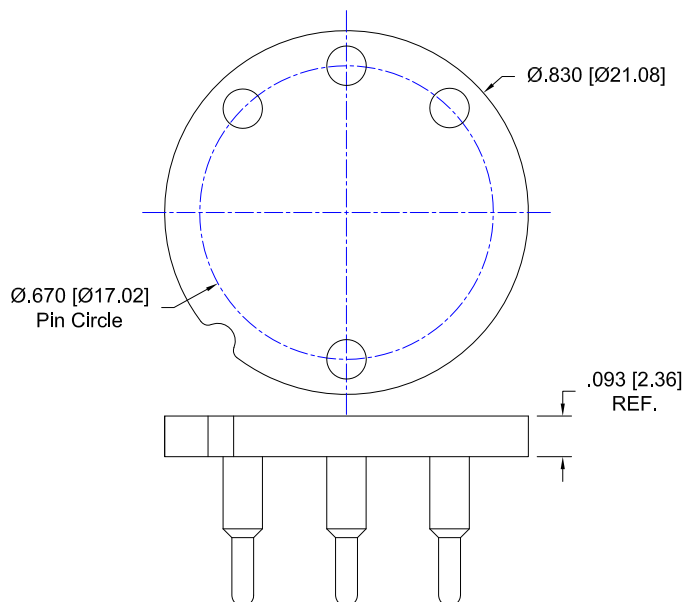


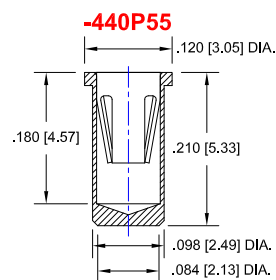
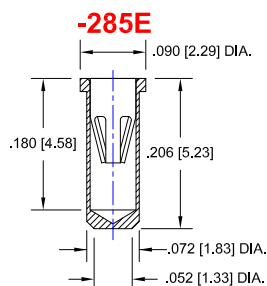
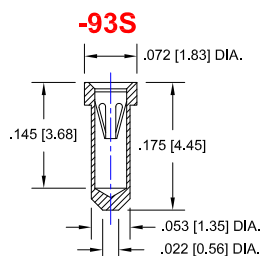
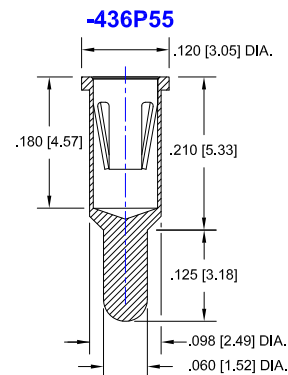
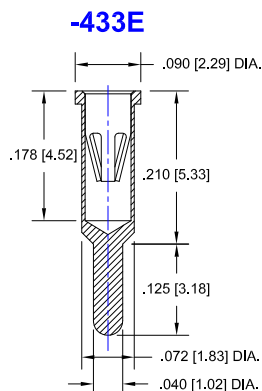
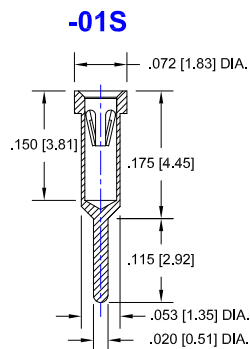
Fig. 6

Thru-Hole: R670-0804-02N-433E-R27-L14

Surface Mount: R670-0804-02N-285E-R27-L14

SolidsenSe Gas Sensor *Continued*

Socket Terminal Details Cross Section View Shown Units: in [mm]



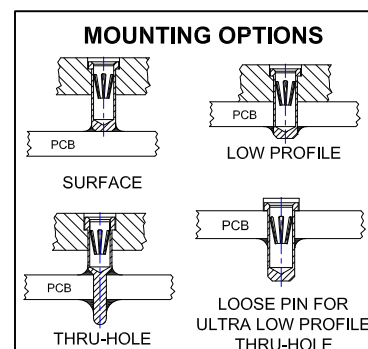
Material:

Insulator: Hi-Temp UL 94V-0
Terminal: Brass, per ASTM-B16
Contact: BeCu, Per ASTM-B194

Plating: RoHS COMPLIANT

R27 TERMINAL: GOLD / CONTACT: GOLD
OTHER PLATINGS AVAILABLE

Terminal Acceptance and Forces							
Thru Hole Terminals				Surface Mount Terminals			
Thru Hole Terminal	Accepts Pin Diameter	Insertion Force	Withdrawal Force	Surface Mount Terminal	Accepts Pin Diameter	Insertion Force	Withdrawal Force
-01S	Ø.018 [Ø0.46]	9.0 oz Avg.	2.0 oz Min	-93S	Ø.018 [Ø0.46]	9.0 oz Avg.	2.0 oz Min
-433E	Ø.040 [Ø1.02]	36.0 oz Max	3.9 oz Min	-285E	Ø.040 [Ø1.02]	36.0 oz Max	3.9 oz Min
-436P55	Ø.060 [Ø1.52]	15.5 oz Max	2.1 oz Min	-440P55	Ø.060 [Ø1.52]	15.5 oz Max	2.1 oz Min





Distributed Worldwide.



ANDON ELECTRONICS CORPORATION

4 Court Drive Lincoln, RI 02865 USA

Phone: 401-333-0388 Fax: 401-333-0287

Email: Info@andonelect.com

Visit us on the Web at www.andonelect.com
or www.andonelectronics.com