



**ANDON**  
INTERCONNECTION SPECIALISTS

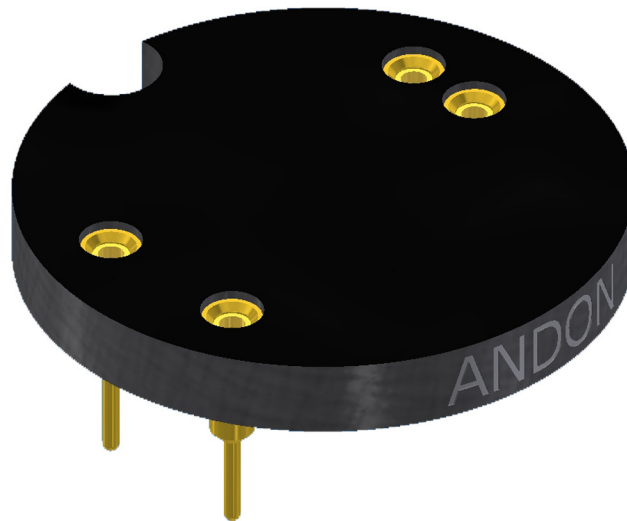


RoHS Compliant  
ISO 9001  
Certified

**HIGH RELIABILITY  
OPTOELECTRONIC SOCKETS FOR  
SST SENSING LTD.**

**SST**

DESIGN • MANUFACTURE • CUSTOMISE • CONFIGURE

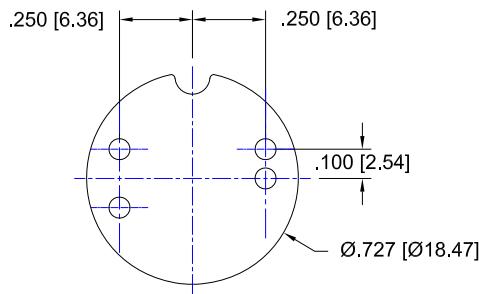


**Featuring Andon's Unique Senstac™ Contact**

SST SENSING LTD. is a trade mark of SST SENSING LTD.

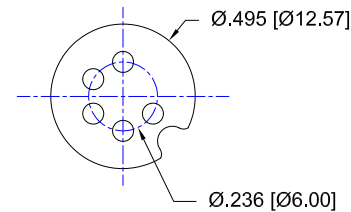
SST SENSING LTD.						
Model Number	Andon Part Number Replace "XXX" with Terminal Type	Terminal Type		Pin Ø [in]	Figure Number	Page Number
		Thru-Hole	Surface Mount			
02S-FR-T3	R236-0605-01N-XXX-R27-L14	01P28	93P28	.028	2	1
02S-T3	R236-0605-01N-XXX-R27-L14	01P28	93P28	.028	2	1
LOX-	R500-SP04-01N-01P28-R27-L14	01P28	93P28	.028	1	1

See last page for other mounting types including low profile options.  
Heat sink socket available to reduce heat and noise. Contact Andon for details.



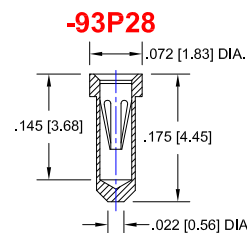
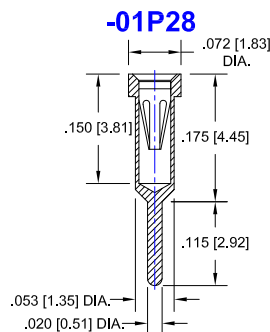
**FIG. 1**

Thru-Hole: R500-SP04-01N-01P28-R27-L14  
Surface Mount: R500-SP04-01N-93P28-R27-L14



**FIG. 2**

Thru-Hole: R236-0605-01N-01P28-R27-L14  
Surface Mount: R236-0605-01N-93P28-R27-L14



## Technical Information

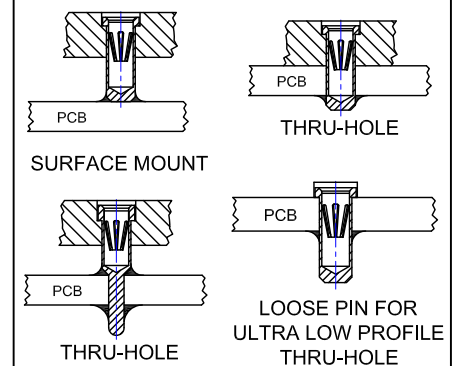
### Material:

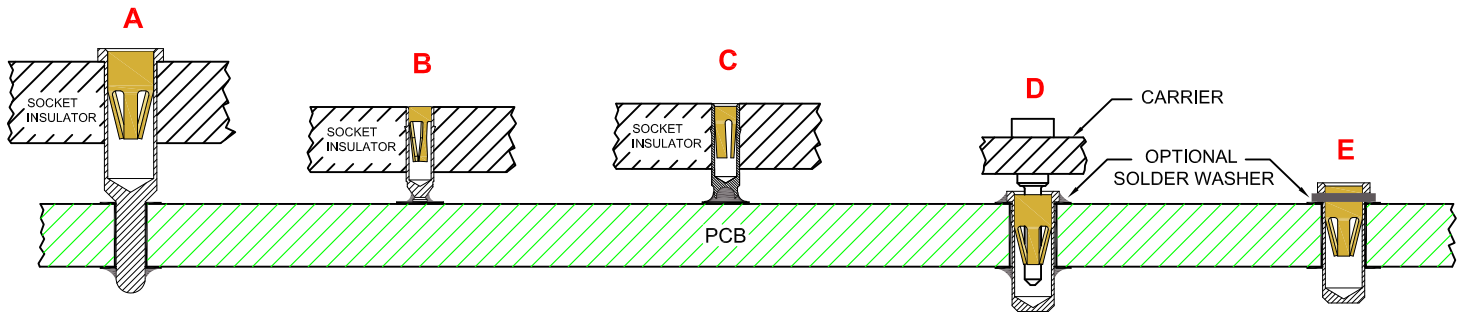
Insulator: Hi-Temp UL 94V-O  
Terminal: Brass, per ASTM-B16  
Contact: BeCu, Per ASTM-B194

**Plating: RoHS COMPLIANT**  
**R27 TERMINAL: GOLD / CONTACT: GOLD**  
**OTHER PLATINGS AVAILABLE**

Terminal Acceptance and Forces							
Thru Hole Terminals				Surface Mount Terminals			
Thru Hole Terminal	Accepts Pin Diameter	Insertion Force	Withdrawal Force	Surface Mount Terminal	Accepts Pin Diameter	Insertion Force	Withdrawal Force
-01P28	Ø.028 [Ø0.71]	0.70 oz Avg.	0.35 oz Min	-93P28	Ø.028 [Ø0.71]	0.70 oz Avg.	0.35 oz Min

### MOUNTING OPTIONS





**THRU-HOLE  
SOCKET**

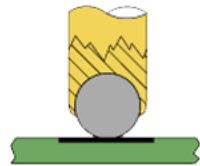
**SMD-SOCKET**

**SMD  
ROLLERBALL<sup>®</sup>  
SOCKET  
(PATENTED)**

**REMOVABLE  
CARRIER  
WITH ULTRA-LOW  
PROFILE PIN SOCKETS**

**INDIVIDUAL  
ULTRA-LOW PROFILE  
PIN SOCKETS  
(BEFORE SOLDERING)**

**ROLLERBALL<sup>®</sup>  
SOCKET**



**BEFORE SOLDERING**

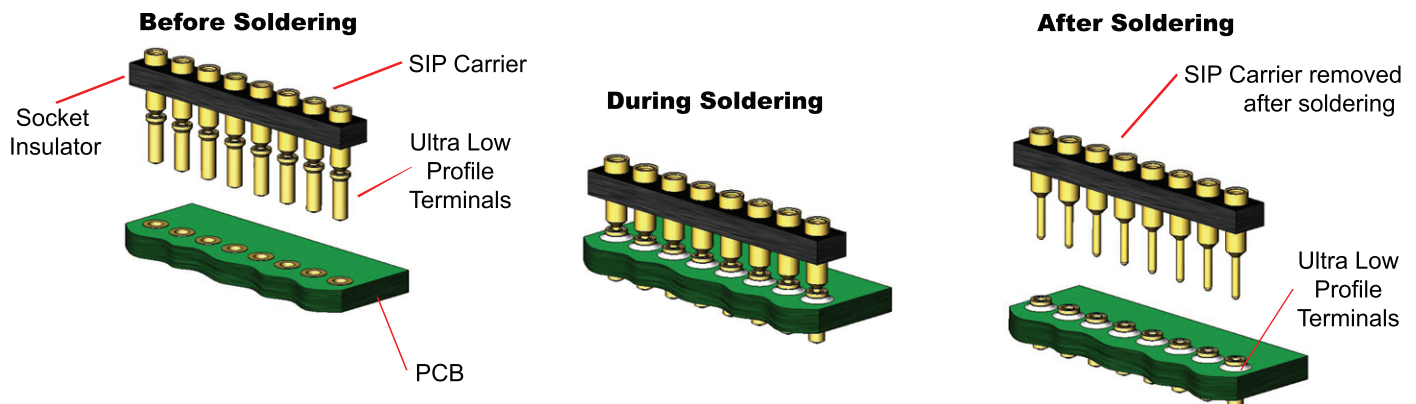
**ROLLERBALL<sup>®</sup>  
SOCKET**



**AFTER SOLDERING**

**A more reliable solder joint for surface mount applications !**

**ULTRA LOW PROFILE SIP/DIP/PGA CARRIER ASSEMBLY See 'D' above**



**Available with or without solder washer**