

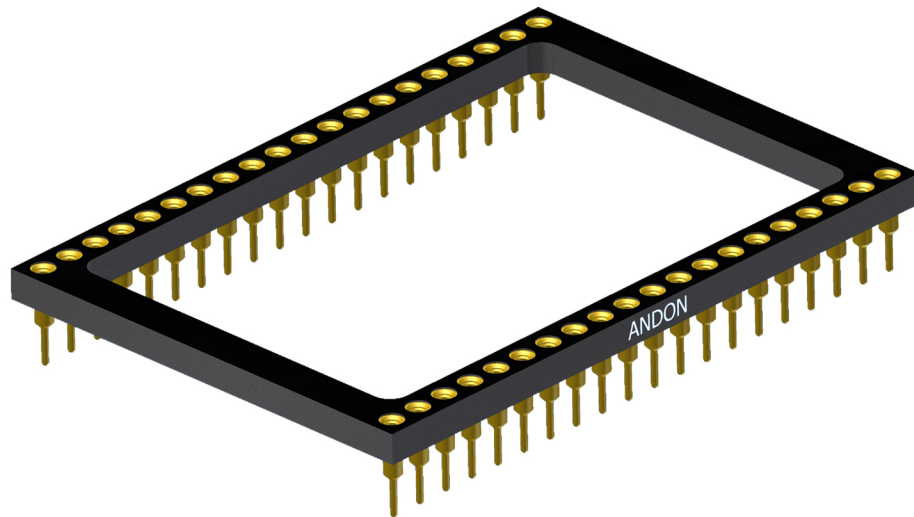


ANDON
INTERCONNECTION SPECIALISTS



RoHS Compliant
ISO 9001
Certified

HIGH RELIABILITY DISPLAY SOCKETS FOR ALL SHORE INDUSTRIES



Featuring Andon's Unique Senstac™ Contact

ALL SHORE INDUSTRIES is a trade mark of ALL SHORE INDUSTRIES

ALL SHORE INDUSTRIES						
Model Number	Andon Part Number Replace "XXX" with Terminal Type	Terminal Type		Pin Ø [in]	Figure Number	Page Number
		Thru-Hole	Surface Mount			
ASI-001	C10-1340-40-01-XXX-R27-L14	01S	93S	.018	6	2
ASI-005	C10-1350-50-01-XXX-R27-L14	01S	93S	.018	13	3
ASI-007	C10-1040-40-01-XXX-R27-L14	01S	93S	.018	3	1
ASI-008	C10-1040-40-01-XXX-R27-L14	01S	93S	.018	3	1
ASI-009	C10-1318-18-01-XXX-R27-L14	01S	93S	.018	15	3
ASI-010	C10-1018-18-01-XXX-R27-L14	01S	93S	.018	1	1
ASI-017	C10-18-18-01-XXX-R27-L14	01S	93S	.018	8	2
ASI-019	C10-97232-32-01-XXX-R27-L14	01S	93S	.018	9	2
ASI-024	C10-1640-40-01-XXX-R27-L14	01S	93S	.018	10	2
ASI-060	C10-1050-50-01-XXX-R27-L14	01S	93S	.018	4	1
ASI-1004	C10-1340-40-01-XXX-R27-L14	01S	93S	.018	6	2
ASI-1024A	C10-37512-12-01-XXX-R27-L14	01S	93S	.018	17	4
ASI-1076	C10-3180-80-01-XXX-R27-L14	01S	93S	.018	16	4
ASI-120910	C10-1024-24-01-XXX-R27-L14	01S	93S	.018	2	1
ASI-3141	C10-1320-20-01-XXX-R27-L14	01S	93S	.018	5	2
ASI-3149	C10-020-20-01-XXX-R27-L14	01S	93S	.018	7	2
ASI-854	C10-1148-48-01-XXX-R27-L14	01S	93S	.018	11	3
ASI-870	C10-1368-68-01-XXX-R27-L14	01S	93S	.018	12	3
ASI-928	C10-1970-70-01-XXX-R27-L14	01S	93S	.018	14	3
ASI-970	C10-1340-40-01-XXX-R27-L14	01S	93S	.018	6	2
ASI-M201203-1	C10-1340-40-01-XXX-R27-L14	01S	93S	.018	6	2

See last page for other mounting types including low profile options.
Heat sink socket available to reduce heat and noise. Contact Andon for details.

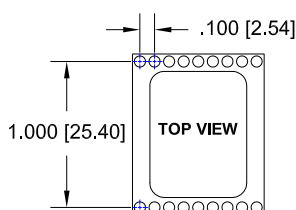


FIG. 1

Thru-Hole: C10-1018-18-01-01S-R27-L14
Surface Mount: C10-1018-18-01-93S-R27-L14

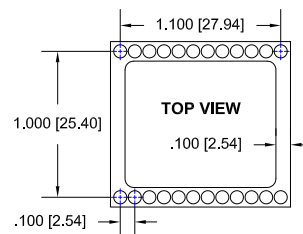


FIG. 2

Thru-Hole: C10-1024-24-01-01S-R27-L14
Surface Mount: C10-1024-24-01-93S-R27-L14

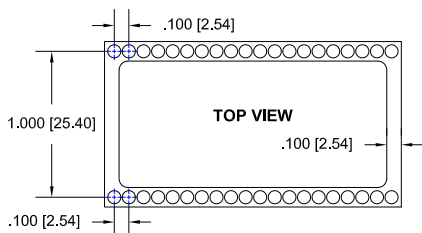


FIG. 3

Thru-Hole: C10-1040-40-01-01S-R27-L14
Surface Mount: C10-1040-40-01-93S-R27-L14

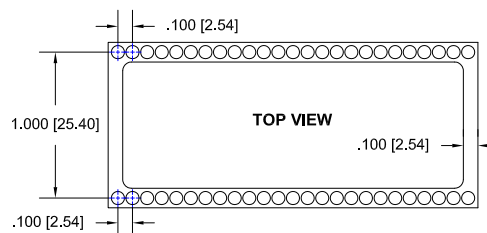


FIG. 4

Thru-Hole: C10-1050-50-01-01S-R27-L14
Surface Mount: C10-1050-50-01-93S-R27-L14

ALL SHORE INDUSTRIES *Continued*

Top View Shown

Units: in [mm]

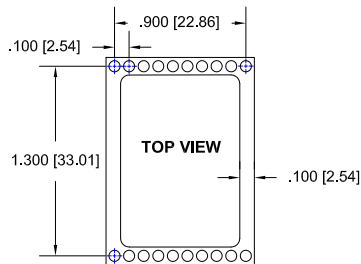


FIG. 5

Thru-Hole: C10-1320-20-01-01S-R27-L14
Surface Mount: C10-1320-20-01-93S-R27-L14

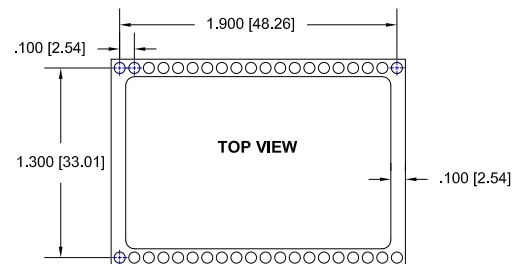


FIG. 6

Thru-Hole: C10-1340-40-01-01S-R27-L14
Surface Mount: C10-1340-40-01-93S-R27-L14

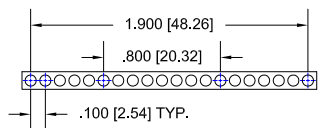


FIG. 7

Thru-Hole: C10-020-20-01-01S-R27-L14
Surface Mount: C10-020-20-01-93S-R27-L14

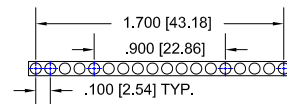


FIG. 8

Thru-Hole: C10-18-18-01-01S-R27-L14
Surface Mount: C10-18-18-01-93S-R27-L14

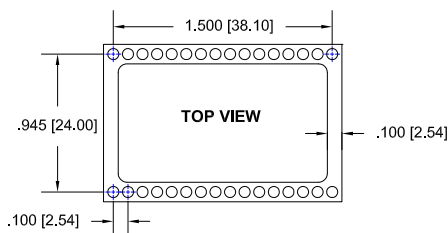


FIG. 9

Thru-Hole: C10-97232-32-01-01S-R27-L14
Surface Mount: C10-97232-32-01-93S-R27-L14

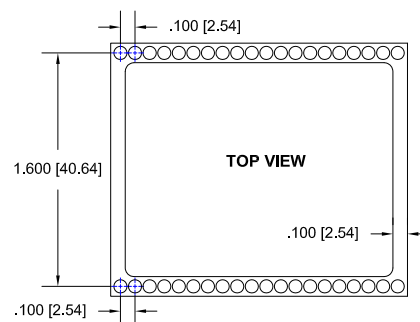


FIG. 10

Thru-Hole: C10-1640-40-01-01S-R27-L14
Surface Mount: C10-1640-40-01-93S-R27-L14

ALL SHORE INDUSTRIES *Continued*

Top View Shown

Units: in [mm]

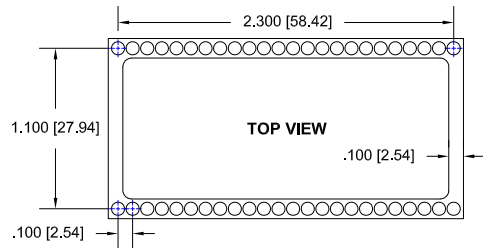


FIG. 11

Thru-Hole: C10-1148-48-01-01S-R27-L14
Surface Mount: C10-1148-48-01-93S-R27-L14

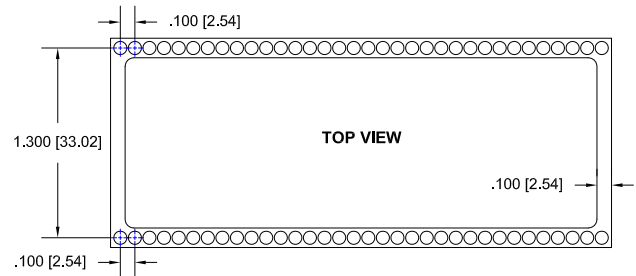


FIG. 12

Thru-Hole: C10-1368-68-01-01S-R27-L14
Surface Mount: C10-1368-68-01-93S-R27-L14

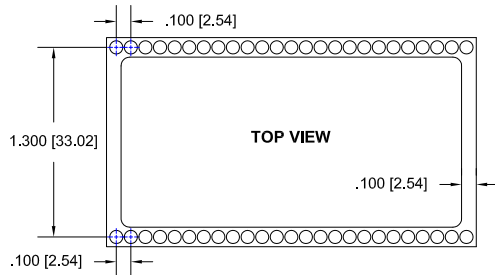


FIG. 13

Thru-Hole: C10-1350-50-01-01S-R27-L14
Surface Mount: C10-1350-50-01-93S-R27-L14

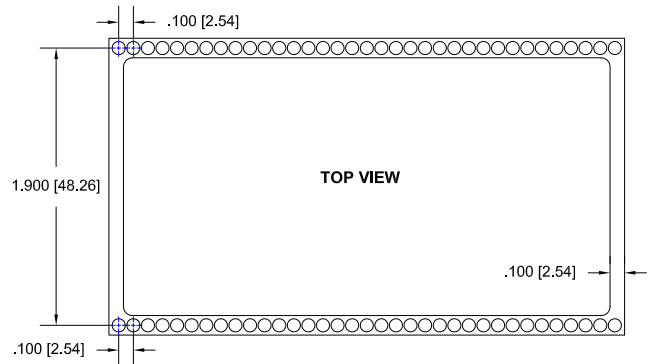


FIG. 14

Thru-Hole: C10-1970-70-01-01S-R27-L14
Surface Mount: C10-1970-70-01-93S-R27-L14

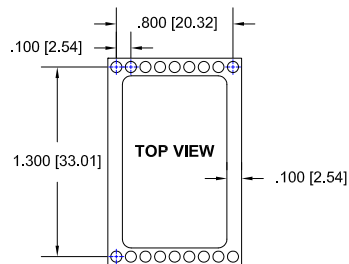


FIG. 15

Thru-Hole: C10-1318-18-01-01S-R27-L14
Surface Mount: C10-1318-18-01-93S-R27-L14

ALL SHORE INDUSTRIES *Continued*

Top View Shown

Units: in [mm]

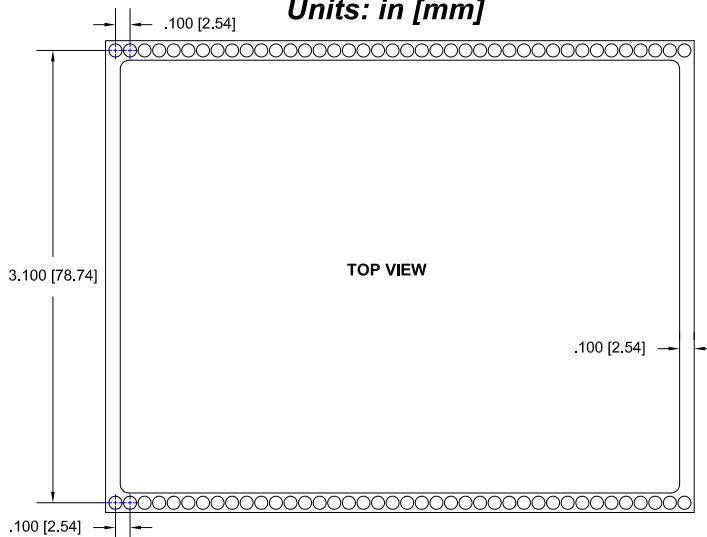


FIG. 16

Thru-Hole: C10-3180-80-01-01S-R27-L14
Surface Mount: C10-3180-80-01-93S-R27-L14

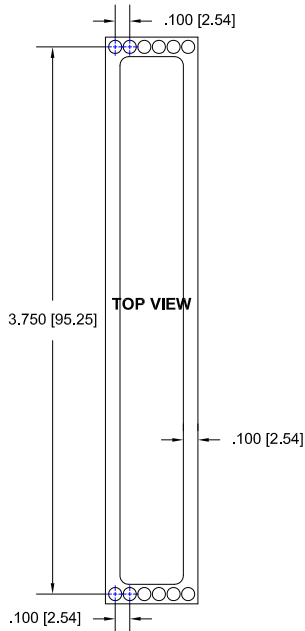


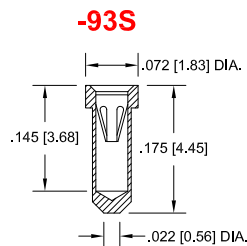
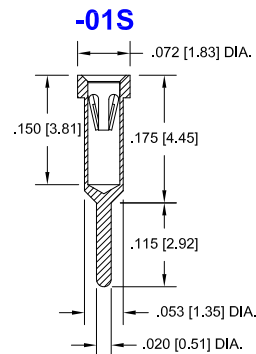
FIG. 17

Thru-Hole: C10-37512-12-01-01S-R27-L14
Surface Mount: C10-37512-12-01-93S-R27-L14

ALL SHORE INDUSTRIES *Continued*

Socket Terminal Details

Cross Section View Shown Units: in [mm]



Technical Information

Material:

Insulator: Hi-Temp UL 94V-O
Terminal: Brass, per ASTM-B16
Contact: BeCu, Per ASTM-B194

Plating: RoHS COMPLIANT

R17 TERMINAL: MATTE TIN / CONTACT: GOLD

R27 TERMINAL: GOLD / CONTACT: GOLD

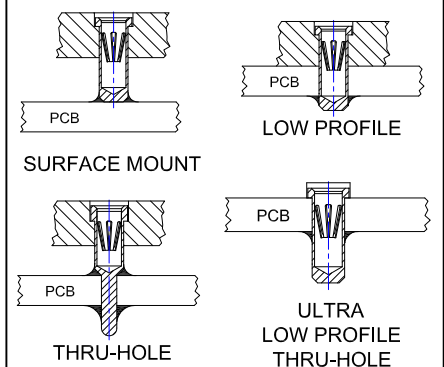
R32 TERMINAL: MATTE TIN / CONTACT: TIN

OTHER PLATINGS AVAILABLE

Terminal Acceptance and Forces

Thru Hole Terminals				Surface Mount Terminals			
Thru Hole Terminal	Accepts Pin Diameter	Insertion Force	Withdrawal Force	Surface Mount Terminal	Accepts Pin Diameter	Insertion Force	Withdrawal Force
-01S	Ø.018 [Ø0.46]	9.0 oz Avg.	2.0 oz Min	-93S	Ø.018 [Ø0.46]	9.0 oz Avg.	2.0 oz Min

MOUNTING OPTIONS



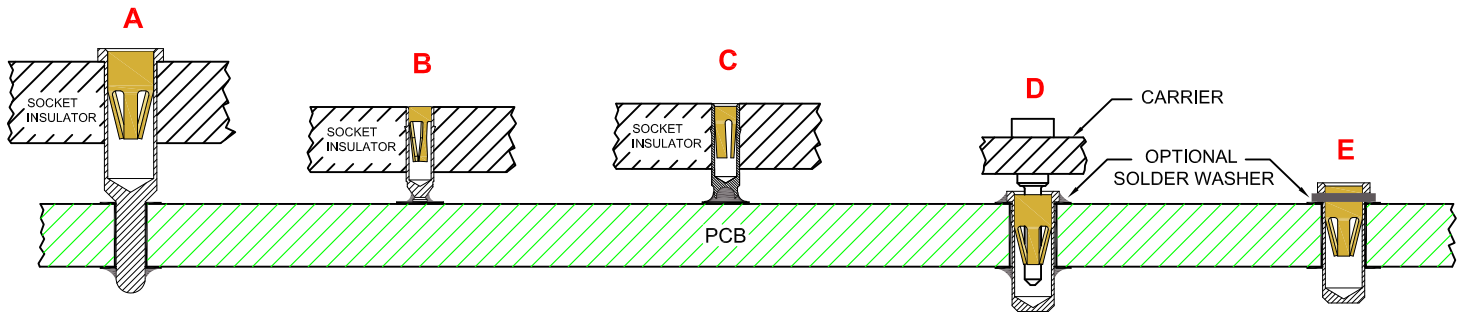
©Copyright 2017 Andon Electronics Corporation. All Rights Reserved. This material is protected under US and other copyrights and may not be copied, sold, or redistributed in any form without written permission of Andon Electronics Corporation. Copyrights and trademarks are property of their respective companies. We reserve the right to change specifications without notice. Andon makes no warranty, expressed or implied, as to the suitability of the sockets for the intended purpose.

"ANDON PROPRIETARY INFORMATION"
RoHS Compliant

*Sockets are not drawn to scale ALL SHORE INDUSTRIES 4/26/2017

ANDON ELECTRONICS CORPORATION
4 Court Drive, Lincoln RI 02865, United States of America

www.andonelectronics.com or www.andonelect.com
Phone 401-333-0388 Fax 401-333-0287
Email Info@andonelect.com



**THRU-HOLE
SOCKET**

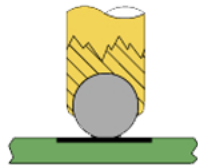
SMD-SOCKET

**SMD
ROLLERBALL®
SOCKET
(PATENTED)**

**REMOVABLE
CARRIER
WITH ULTRA-LOW
PROFILE PIN SOCKETS**

**INDIVIDUAL
ULTRA-LOW PROFILE
PIN SOCKETS
(BEFORE SOLDERING)**

**ROLLERBALL®
SOCKET**



BEFORE SOLDERING

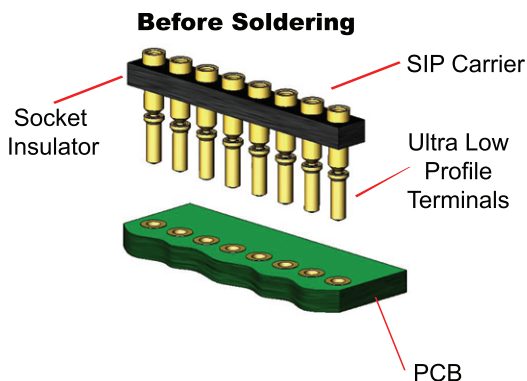
**ROLLERBALL®
SOCKET**



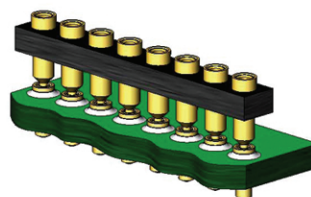
AFTER SOLDERING

A more reliable solder joint for surface mount applications !

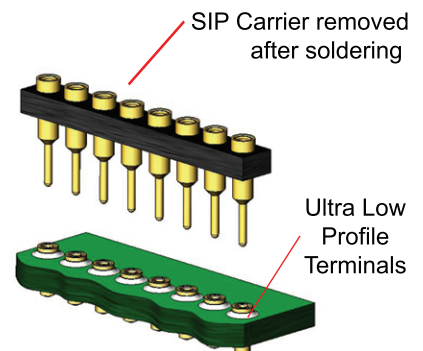
ULTRA LOW PROFILE SIP/DIP/PGA CARRIER ASSEMBLY See 'D' above



During Soldering



After Soldering



Available with or without solder washer