



ANDON
INTERCONNECTION SPECIALISTS



RoHS Compliant
ISO 9001
Certified

**HIGH RELIABILITY
OPTOELECTRONIC SOCKETS FOR
COSMO ELECTRONICS CORPORATION**



Featuring Andon's Unique Senstac™ Contact

COSMO® is a trade mark of COSMO ELECTRONICS CORPORATION

| COSMO ELECTRONICS CORPORATION | | | | | | |
|---|---|---------------|---------------|------------|---------------|-------------|
| COSMO ELECTRONICS CORPORATION Model Number | Andon Part Number Replace "XXX" with Terminal Type | Terminal Type | | Pin Ø [in] | Figure Number | Page Number |
| | | Thru-Hole | Surface Mount | | | |
| C2C050001 | C10-314-08-01-XXX-R27-L14 | 01S | 93S | .018 | 23 | 8 |
| C2C120001 | C10-314-08-01-XXX-R27-L14 | 01S | 93S | .018 | 23 | 8 |
| C2C240001 | C10-314-08-01-XXX-R27-L14 | 01S | 93S | .018 | 23 | 8 |
| D1A050000 | C10-314-08-02-XXX-R27-L14 | 01S | 93S | .018 | 24 | 8 |
| D1A051000 | C10-314-08-02-XXX-R27-L14 | 01S | 93S | .018 | 24 | 8 |
| D1A120000 | C10-314-08-02-XXX-R27-L14 | 01S | 93S | .018 | 24 | 8 |
| D1A121000 | C10-314-08-02-XXX-R27-L14 | 01S | 93S | .018 | 24 | 8 |
| D1A240000 | C10-314-08-02-XXX-R27-L14 | 01S | 93S | .018 | 24 | 8 |
| D1A241000 | C10-314-08-02-XXX-R27-L14 | 01S | 93S | .018 | 24 | 8 |
| D1B050000 | C10-314-08-02-XXX-R27-L14 | 01S | 93S | .018 | 24 | 8 |
| D1B051000 | C10-314-08-02-XXX-R27-L14 | 01S | 93S | .018 | 24 | 8 |
| D1B120000 | C10-314-08-02-XXX-R27-L14 | 01S | 93S | .018 | 24 | 8 |
| D1B121000 | C10-314-08-02-XXX-R27-L14 | 01S | 93S | .018 | 24 | 8 |
| D1B240000 | C10-314-08-02-XXX-R27-L14 | 01S | 93S | .018 | 24 | 8 |
| D1B241000 | C10-314-08-02-XXX-R27-L14 | 01S | 93S | .018 | 24 | 8 |
| D1C050000 | C10-314-08-02-XXX-R27-L14 | 01S | 93S | .018 | 24 | 8 |
| D1C051000 | C10-314-08-02-XXX-R27-L14 | 01S | 93S | .018 | 24 | 8 |
| D1C120000 | C10-314-08-02-XXX-R27-L14 | 01S | 93S | .018 | 24 | 8 |
| D1C121000 | C10-314-08-02-XXX-R27-L14 | 01S | 93S | .018 | 24 | 8 |
| D1C240000 | C10-314-08-02-XXX-R27-L14 | 01S | 93S | .018 | 24 | 8 |
| D1C241000 | C10-314-08-02-XXX-R27-L14 | 01S | 93S | .018 | 24 | 8 |
| D2A050000 | C10-314-08-02-XXX-R27-L14 | 01S | 93S | .018 | 24 | 8 |
| D2A051000 | C10-314-08-02-XXX-R27-L14 | 01S | 93S | .018 | 24 | 8 |
| D2A120000 | C10-314-08-02-XXX-R27-L14 | 01S | 93S | .018 | 24 | 8 |
| D2A121000 | C10-314-08-02-XXX-R27-L14 | 01S | 93S | .018 | 24 | 8 |
| D2A240000 | C10-314-08-02-XXX-R27-L14 | 01S | 93S | .018 | 24 | 8 |
| D2A241000 | C10-314-08-02-XXX-R27-L14 | 01S | 93S | .018 | 24 | 8 |
| DH1A050000 | C10-314-08-02-XXX-R27-L14 | 01S | 93S | .018 | 24 | 8 |
| DH1A120000 | C10-314-08-02-XXX-R27-L14 | 01S | 93S | .018 | 24 | 8 |
| DH1A240000 | C10-314-08-02-XXX-R27-L14 | 01S | 93S | .018 | 24 | 8 |
| G1A030000 | C10-806-04-01-XXX-R27-L14 | 01S | 93S | .018 | 15 | 7 |
| G1A031000 | C10-1006-04-01-XXX-R27-L14 | 01S | 93S | .018 | 16 | 7 |
| G1A050000 | C10-806-04-01-XXX-R27-L14 | 01S | 93S | .018 | 15 | 7 |
| G1A051000 | C10-1006-04-01-XXX-R27-L14 | 01S | 93S | .018 | 16 | 7 |
| G1A060000 | C10-806-04-01-XXX-R27-L14 | 01S | 93S | .018 | 15 | 7 |
| G1A061000 | C10-1006-04-01-XXX-R27-L14 | 01S | 93S | .018 | 16 | 7 |
| G1A080000 | C10-806-04-01-XXX-R27-L14 | 01S | 93S | .018 | 15 | 7 |
| G1A081000 | C10-1006-04-01-XXX-R27-L14 | 01S | 93S | .018 | 16 | 7 |
| G1A090000 | C10-806-04-01-XXX-R27-L14 | 01S | 93S | .018 | 15 | 7 |
| G1A091000 | C10-1006-04-01-XXX-R27-L14 | 01S | 93S | .018 | 16 | 7 |
| G1A120000 | C10-806-04-01-XXX-R27-L14 | 01S | 93S | .018 | 15 | 7 |
| G1A121000 | C10-1006-04-01-XXX-R27-L14 | 01S | 93S | .018 | 16 | 7 |
| G1A240000 | C10-806-04-01-XXX-R27-L14 | 01S | 93S | .018 | 15 | 7 |
| G1A241000 | C10-1006-04-01-XXX-R27-L14 | 01S | 93S | .018 | 16 | 7 |
| G2A031000 | C10-808-06-02-XXX-R27-L14 | 01S | 93S | .018 | 12 | 6 |
| G2A051000 | C10-1008-06-01-XXX-R27-L14 | 01S | 93S | .018 | 1 | 5 |
| G2A060000 | C10-808-06-02-XXX-R27-L14 | 01S | 93S | .018 | 12 | 6 |
| G2A061000 | C10-1008-06-01-XXX-R27-L14 | 01S | 93S | .018 | 1 | 5 |
| G2A080000 | C10-808-06-02-XXX-R27-L14 | 01S | 93S | .018 | 12 | 6 |
| G2A081000 | C10-1008-06-01-XXX-R27-L14 | 01S | 93S | .018 | 1 | 5 |
| G2A090000 | C10-808-06-02-XXX-R27-L14 | 01S | 93S | .018 | 12 | 6 |
| G2A091000 | C10-1008-06-01-XXX-R27-L14 | 01S | 93S | .018 | 1 | 5 |
| G2A120000 | C10-808-06-02-XXX-R27-L14 | 01S | 93S | .018 | 12 | 6 |
| G2A121000 | C10-1008-06-01-XXX-R27-L14 | 01S | 93S | .018 | 1 | 5 |
| G2A240000 | C10-808-06-02-XXX-R27-L14 | 01S | 93S | .018 | 12 | 6 |

See last page for other mounting types including low profile options.
Heat sink socket available to reduce heat and noise. Contact Andon for details.

"ANDON PROPRIETARY INFORMATION"
RoHS Compliant

©Copyright 2017 Andon Electronics Corporation. All Rights Reserved. This material is protected under US and other copyrights and may not be copied, sold, or redistributed in any form without written permission of Andon Electronics Corporation. Copyrights and trademarks are property of their respective companies. We reserve the right to change specifications without notice. Andon makes no warranty, expressed or implied, as to the suitability of the sockets for the intended purpose.

*Sockets are not drawn to scale COSMO ELECTRONICS CORPORATION

ANDON ELECTRONICS CORPORATION
4 Court Drive, Lincoln RI 02865, United States of America

www.andonelectronics.com or www.andonelect.com
Phone 401-333-0388 Fax 401-333-0287
Email Info@andonelect.com

| COSMO ELECTRONICS CORPORATION | | | | | | |
|---|---|---------------|---------------|------------|---------------|-------------|
| COSMO ELECTRONICS CORPORATION Model Number | Andon Part Number Replace "XXX" with Terminal Type | Terminal Type | | Pin Ø [in] | Figure Number | Page Number |
| | | Thru-Hole | Surface Mount | | | |
| G2A241000 | C10-1008-06-01-XXX-R27-L14 | 01S | 93S | .018 | 1 | 5 |
| K10101T | C10-304-04-01-XXX-R27-L14 | 01S | 93S | .018 | 20 | 8 |
| K10101W | C10-304-04-01-XXX-R27-L14 | 01S | 93S | .018 | 20 | 8 |
| K10101X | C10-304-04-01-XXX-R27-L14 | 01S | 93S | .018 | 20 | 8 |
| K10101Z | C10-304-04-01-XXX-R27-L14 | 01S | 93S | .018 | 20 | 8 |
| K10103T | C10-404-04-02-XXX-R27-L14 | 01S | 93S | .018 | 19 | 8 |
| K10103W | C10-404-04-02-XXX-R27-L14 | 01S | 93S | .018 | 19 | 8 |
| K10103X | C10-404-04-02-XXX-R27-L14 | 01S | 93S | .018 | 19 | 8 |
| K10103Z | C10-404-04-02-XXX-R27-L14 | 01S | 93S | .018 | 19 | 8 |
| K20101X | C10-306-06-01-XXX-R27-L14 | 01S | 93S | .018 | 7 | 6 |
| K20103X | C10-406-06-01-XXX-R27-L14 | 01S | 93S | .018 | 21 | 8 |
| K30101X | C10-304-04-01-XXX-R27-L14 | 01S | 93S | .018 | 20 | 8 |
| K30103X | C10-404-04-02-XXX-R27-L14 | 01S | 93S | .018 | 19 | 8 |
| K40103X | C10-404-04-02-XXX-R27-L14 | 01S | 93S | .018 | 19 | 8 |
| KAQV210 | C10-306-06-01-XXX-R27-L14 | 01S | 93S | .018 | 7 | 6 |
| KAQV212 | C10-306-06-01-XXX-R27-L14 | 01S | 93S | .018 | 7 | 6 |
| KAQV213 | C10-306-06-01-XXX-R27-L14 | 01S | 93S | .018 | 7 | 6 |
| KAQV214 | C10-306-06-01-XXX-R27-L14 | 01S | 93S | .018 | 7 | 6 |
| KAQV216 | C10-308-08-01-XXX-R27-L14 | 01S | 93S | .018 | 22 | 8 |
| KAQV217 | C10-306-06-01-XXX-R27-L14 | 01S | 93S | .018 | 7 | 6 |
| KAQV253 | C10-306-06-01-XXX-R27-L14 | 01S | 93S | .018 | 7 | 6 |
| KAQV254 | C10-306-06-01-XXX-R27-L14 | 01S | 93S | .018 | 7 | 6 |
| KAQV412 | C10-306-06-01-XXX-R27-L14 | 01S | 93S | .018 | 7 | 6 |
| KAQV414 | C10-306-06-01-XXX-R27-L14 | 01S | 93S | .018 | 7 | 6 |
| KAQW210 | C10-308-08-01-XXX-R27-L14 | 01S | 93S | .018 | 22 | 8 |
| KAQW212 | C10-308-08-01-XXX-R27-L14 | 01S | 93S | .018 | 22 | 8 |
| KAQW213 | C10-308-08-01-XXX-R27-L14 | 01S | 93S | .018 | 22 | 8 |
| KAQW214 | C10-308-08-01-XXX-R27-L14 | 01S | 93S | .018 | 22 | 8 |
| KAQW216 | C10-308-08-01-XXX-R27-L14 | 01S | 93S | .018 | 22 | 8 |
| KAQW217 | C10-308-08-01-XXX-R27-L14 | 01S | 93S | .018 | 22 | 8 |
| KAQW412 | C10-308-08-01-XXX-R27-L14 | 01S | 93S | .018 | 22 | 8 |
| KAQW414 | C10-308-08-01-XXX-R27-L14 | 01S | 93S | .018 | 22 | 8 |
| KAQW612 | C10-308-08-01-XXX-R27-L14 | 01S | 93S | .018 | 22 | 8 |
| KAQW614 | C10-308-08-01-XXX-R27-L14 | 01S | 93S | .018 | 22 | 8 |
| KAQY210 | C10-304-04-01-XXX-R27-L14 | 01S | 93S | .018 | 20 | 8 |
| KAQY212 | C10-304-04-01-XXX-R27-L14 | 01S | 93S | .018 | 20 | 8 |
| KAQY213 | C10-304-04-01-XXX-R27-L14 | 01S | 93S | .018 | 20 | 8 |
| KAQY214 | C10-304-04-01-XXX-R27-L14 | 01S | 93S | .018 | 20 | 8 |
| KAQY216 | C10-304-04-01-XXX-R27-L14 | 01S | 93S | .018 | 20 | 8 |
| KAQY217 | C10-304-04-01-XXX-R27-L14 | 01S | 93S | .018 | 20 | 8 |
| KAQY412 | C10-304-04-01-XXX-R27-L14 | 01S | 93S | .018 | 20 | 8 |
| KAQY414 | C10-304-04-01-XXX-R27-L14 | 01S | 93S | .018 | 20 | 8 |
| KMOC3011 | C10-304-04-01-XXX-R27-L14 | 01S | 93S | .018 | 20 | 8 |
| KMOC3011H | C10-404-04-02-XXX-R27-L14 | 01S | 93S | .018 | 19 | 8 |
| KMOC3012 | C10-304-04-01-XXX-R27-L14 | 01S | 93S | .018 | 20 | 8 |
| KMOC3012 | C10-404-04-02-XXX-R27-L14 | 01S | 93S | .018 | 19 | 8 |
| KMOC3023 | C10-304-04-01-XXX-R27-L14 | 01S | 93S | .018 | 20 | 8 |
| KMOC3023H | C10-406-04-01-XXX-R27-L14 | 01S | 93S | .018 | 13 | 7 |
| KMOC3043 | C10-304-04-01-XXX-R27-L14 | 01S | 93S | .018 | 20 | 8 |
| KMOC3043H | C10-406-04-01-XXX-R27-L14 | 01S | 93S | .018 | 13 | 7 |
| KMOC3053 | C10-304-04-01-XXX-R27-L14 | 01S | 93S | .018 | 20 | 8 |
| KMOC3053H | C10-406-04-01-XXX-R27-L14 | 01S | 93S | .018 | 13 | 7 |
| KMOC3063 | C10-304-04-01-XXX-R27-L14 | 01S | 93S | .018 | 20 | 8 |
| KMOC3063H | C10-406-04-01-XXX-R27-L14 | 01S | 93S | .018 | 13 | 7 |
| KMOC3083 | C10-304-04-01-XXX-R27-L14 | 01S | 93S | .018 | 20 | 8 |

See last page for other mounting types including low profile options.
Heat sink socket available to reduce heat and noise. Contact Andon for details.

"ANDON PROPRIETARY INFORMATION"
RoHS Compliant

©Copyright 2017 Andon Electronics Corporation. All Rights Reserved. This material is protected under US and other copyrights and may not be copied, sold, or redistributed in any form without written permission of Andon Electronics Corporation. Copyrights and trademarks are property of their respective companies. We reserve the right to change specifications without notice. Andon makes no warranty, expressed or implied, as to the suitability of the sockets for the intended purpose.

*Sockets are not drawn to scale COSMO ELECTRONICS CORPORATION

ANDON ELECTRONICS CORPORATION
4 Court Drive, Lincoln RI 02865, United States of America

www.andonelectronics.com or www.andonelect.com
Phone 401-333-0388 Fax 401-333-0287
Email Info@andonelect.com

| COSMO ELECTRONICS CORPORATION | | | | | | | |
|---|----------------------------------|---------------|---------------|------------|---------------|-------------|--|
| COSMO ELECTRONICS CORPORATION Model Number | Andon Part Number | Terminal Type | | Pin Ø [in] | Figure Number | Page Number | |
| | Replace "XXX" with Terminal Type | Thru-Hole | Surface Mount | | | | |
| KP1020 | C10-308-08-01-XXX-R27-L14 | 01S | 93S | .018 | 22 | 8 | |
| KP1020H | C10-408-08-01-XXX-R27-L14 | 01S | 93S | .018 | 9 | 6 | |
| KP1040 | C10-316-16-01-XXX-R27-L14 | 01S | 93S | .018 | 14 | 7 | |
| KP1040H | C10-416-16-01-XXX-R27-L14 | 01S | 93S | .018 | 11 | 6 | |
| KP2110 | C10-306-06-01-XXX-R27-L14 | 01S | 93S | .018 | 7 | 6 | |
| KP2110H | C10-406-06-01-XXX-R27-L14 | 01S | 93S | .018 | 21 | 8 | |
| KP2210 | C10-306-06-01-XXX-R27-L14 | 01S | 93S | .018 | 7 | 6 | |
| KP2210H | C10-406-06-01-XXX-R27-L14 | 01S | 93S | .018 | 21 | 8 | |
| KP3020 | C10-308-08-01-XXX-R27-L14 | 01S | 93S | .018 | 22 | 8 | |
| KP3020H | C10-408-08-01-XXX-R27-L14 | 01S | 93S | .018 | 9 | 6 | |
| KP3040 | C10-316-16-01-XXX-R27-L14 | 01S | 93S | .018 | 14 | 7 | |
| KP3040H | C10-416-16-01-XXX-R27-L14 | 01S | 93S | .018 | 11 | 6 | |
| KP4010X | C10-304-04-01-XXX-R27-L14 | 01S | 93S | .018 | 20 | 8 | |
| KP4020 | C10-308-08-01-XXX-R27-L14 | 01S | 93S | .018 | 22 | 8 | |
| KP4020H | C10-408-08-01-XXX-R27-L14 | 01S | 93S | .018 | 9 | 6 | |
| KP4040 | C10-316-16-01-XXX-R27-L14 | 01S | 93S | .018 | 14 | 7 | |
| KP4040H | C10-416-16-01-XXX-R27-L14 | 01S | 93S | .018 | 11 | 6 | |
| KP60103H | C10-406-06-01-XXX-R27-L14 | 01S | 93S | .018 | 21 | 8 | |
| KP6010X | C10-306-06-01-XXX-R27-L14 | 01S | 93S | .018 | 7 | 6 | |
| KPC4N33 | C10-306-06-01-XXX-R27-L14 | 01S | 93S | .018 | 7 | 6 | |
| KPC4N33H | C10-406-06-01-XXX-R27-L14 | 01S | 93S | .018 | 21 | 8 | |
| KPC6N135 | C10-408-08-01-XXX-R27-L14 | 01S | 93S | .018 | 9 | 6 | |
| KPC6N136 | C10-408-08-01-XXX-R27-L14 | 01S | 93S | .018 | 9 | 6 | |
| KPC6N137 | C10-408-08-01-XXX-R27-L14 | 01S | 93S | .018 | 9 | 6 | |
| KPC6N138 | C10-408-08-01-XXX-R27-L14 | 01S | 93S | .018 | 9 | 6 | |
| KPC6N139 | C10-408-08-01-XXX-R27-L14 | 01S | 93S | .018 | 9 | 6 | |
| KPC815 | C10-304-04-01-XXX-R27-L14 | 01S | 93S | .018 | 20 | 8 | |
| KPC815H | C10-404-04-02-XXX-R27-L14 | 01S | 93S | .018 | 19 | 8 | |
| KPC825 | C10-308-08-01-XXX-R27-L14 | 01S | 93S | .018 | 22 | 8 | |
| KPC825H | C10-408-08-01-XXX-R27-L14 | 01S | 93S | .018 | 9 | 6 | |
| KPC845 | C10-316-16-01-XXX-R27-L14 | 01S | 93S | .018 | 14 | 7 | |
| KPC845H | C10-416-16-01-XXX-R27-L14 | 01S | 93S | .018 | 11 | 6 | |
| KPLR1320M10 | C10-003-03-01-XXX-R27-L14 | 01P28 | 93P28 | .028 | 6 | 5 | |
| KPLR1320M20 | C10-003-03-01-XXX-R27-L14 | 01P28 | 93P28 | .028 | 6 | 5 | |
| KPLT1320M10 | C10-003-03-01-XXX-R27-L14 | 01P28 | 93P28 | .028 | 6 | 5 | |
| KPLT1320M20 | C10-003-03-01-XXX-R27-L14 | 01P28 | 93P28 | .028 | 6 | 5 | |
| KPLT1320M40 | CSP079-02-01-XXX-R27-L14 | 01S | 93S | .018 | 5 | 5 | |
| KPLT1320M50 | C10-003-03-01-XXX-R27-L14 | 01S | 93S | .018 | 4 | 5 | |
| KPLT1320M60 | C10-003-03-01-XXX-R27-L14 | 01S | 93S | .018 | 4 | 5 | |
| KPLT1320M70 | C10-003-03-01-XXX-R27-L14 | 01S | 93S | .018 | 4 | 5 | |
| KPLT1320M80 | C10-003-03-01-XXX-R27-L14 | 01S | 93S | .018 | 4 | 5 | |
| KPLT1320M90 | C10-003-03-01-XXX-R27-L14 | 01P28 | 93P28 | .028 | 6 | 5 | |
| KPLT1320M91 | C10-003-03-01-XXX-R27-L14 | 01P28 | 93P28 | .028 | 6 | 5 | |
| KPLT1320M92 | C10-003-03-01-XXX-R27-L14 | 01P28 | 93P28 | .028 | 6 | 5 | |
| KPLT2500M10 | C10-003-03-01-XXX-R27-L14 | 01P28 | 93P28 | .028 | 6 | 5 | |
| KPLT2500M20 | C10-003-03-01-XXX-R27-L14 | 01P28 | 93P28 | .028 | 6 | 5 | |
| KPLT2500M40 | CSP079-02-01-XXX-R27-L14 | 01S | 93S | .018 | 5 | 5 | |
| KPLT2500M50 | C10-003-03-01-XXX-R27-L14 | 01S | 93S | .018 | 4 | 5 | |
| KPLT2500M60 | C10-003-03-01-XXX-R27-L14 | 01S | 93S | .018 | 4 | 5 | |
| KPLT2500M61 | C10-003-03-01-XXX-R27-L14 | 01S | 93S | .018 | 4 | 5 | |
| KPLT2500M70 | C10-003-03-01-XXX-R27-L14 | 01S | 93S | .018 | 4 | 5 | |
| KPLT2500M80 | C10-003-03-01-XXX-R27-L14 | 01S | 93S | .018 | 4 | 5 | |
| KPLT2500M90 | C10-003-03-01-XXX-R27-L14 | 01P28 | 93P28 | .028 | 6 | 5 | |
| KPLT2500M91 | C10-003-03-01-XXX-R27-L14 | 01P28 | 93P28 | .028 | 6 | 5 | |
| KPLT2500M92 | C10-003-03-01-XXX-R27-L14 | 01P28 | 93P28 | .028 | 6 | 5 | |

See last page for other mounting types including low profile options.
Heat sink socket available to reduce heat and noise. Contact Andon for details.

©Copyright 2017 Andon Electronics Corporation. All Rights Reserved. This material is protected under US and other copyrights and may not be copied, sold, or redistributed in any form without written permission of Andon Electronics Corporation. Copyrights and trademarks are property of their respective companies. We reserve the right to change specifications without notice. Andon makes no warranty, expressed or implied, as to the suitability of the sockets for the intended purpose.

RoHS Compliant

2/20/2017

*Sockets are not drawn to scale COSMO ELECTRONICS CORPORATION

ANDON ELECTRONICS CORPORATION
4 Court Drive, Lincoln RI 02865, United States of America

www.andonelectronics.com or www.andonelect.com
Phone 401-333-0388 Fax 401-333-0287
Email Info@andonelect.com

| COSMO ELECTRONICS CORPORATION | | | | | | |
|---|---|---------------|---------------|------------|---------------|-------------|
| COSMO ELECTRONICS CORPORATION Model Number | Andon Part Number Replace "XXX" with Terminal Type | Terminal Type | | Pin Ø [in] | Figure Number | Page Number |
| | | Thru-Hole | Surface Mount | | | |
| KPLT5000M10 | C10-003-03-01-XXX-R27-L14 | 01P28 | 93P28 | .028 | 6 | 5 |
| KPLT5000M20 | C10-003-03-01-XXX-R27-L14 | 01P28 | 93P28 | .028 | 6 | 5 |
| KPLT5000M40 | CSP079-02-01-XXX-R27-L14 | 01S | 93S | .018 | 5 | 5 |
| KPLT5000M50 | C10-003-03-01-XXX-R27-L14 | 01S | 93S | .018 | 4 | 5 |
| KPLT5000M60 | C10-003-03-01-XXX-R27-L14 | 01S | 93S | .018 | 4 | 5 |
| KPLT5000M61 | C10-003-03-01-XXX-R27-L14 | 01S | 93S | .018 | 4 | 5 |
| KPLT5000M70 | C10-003-03-01-XXX-R27-L14 | 01S | 93S | .018 | 4 | 5 |
| KPLT5000M80 | C10-003-03-01-XXX-R27-L14 | 01S | 93S | .018 | 4 | 5 |
| KPLT5000M90 | C10-003-03-01-XXX-R27-L14 | 01P28 | 93P28 | .028 | 6 | 5 |
| KPLT5000M91 | C10-003-03-01-XXX-R27-L14 | 01P28 | 93P28 | .028 | 6 | 5 |
| KPLT5000M92 | C10-003-03-01-XXX-R27-L14 | 01P28 | 93P28 | .028 | 6 | 5 |
| KSD203AC2 | C10-012-04-01-XXX-R27-L14 | 436P55 | 440P55 | .060 | 3 | 5 |
| KSD203AC3 | CSP600-04-01-XXX-R27-L14 | 507EP72 | 508EP72 | .040/.080 | 18 | 7 |
| KSD203DC2 | C10-012-04-01-XXX-R27-L14 | 436P55 | 440P55 | .060 | 3 | 5 |
| KSD205AC3 | CSP600-04-01-XXX-R27-L14 | 507EP72 | 508EP72 | .040/.080 | 18 | 7 |
| KSD210AC3 | CSP600-04-01-XXX-R27-L14 | 507EP72 | 508EP72 | .040/.080 | 18 | 7 |
| KSD215AC3 | CSP600-04-01-XXX-R27-L14 | 507EP72 | 508EP72 | .040/.080 | 18 | 7 |
| KSD225AC3 | CSP600-04-01-XXX-R27-L14 | 507EP72 | 508EP72 | .040/.080 | 18 | 7 |
| KSD240AC3 | CSP600-04-01-XXX-R27-L14 | 507EP72 | 508EP72 | .040/.080 | 18 | 7 |
| KTLP3502 | C10-308-08-01-XXX-R27-L14 | 01S | 93S | .018 | 22 | 8 |
| KTLP3502H | C10-408-08-01-XXX-R27-L14 | 01S | 93S | .018 | 9 | 6 |
| KTLP3503 | C10-308-08-01-XXX-R27-L14 | 01S | 93S | .018 | 22 | 8 |
| KTLP3503H | C10-408-08-01-XXX-R27-L14 | 01S | 93S | .018 | 9 | 6 |
| KTLP3506 | C10-308-08-01-XXX-R27-L14 | 01S | 93S | .018 | 22 | 8 |
| KTLP3506H | C10-408-08-01-XXX-R27-L14 | 01S | 93S | .018 | 9 | 6 |
| KTLP3507 | C10-308-08-01-XXX-R27-L14 | 01S | 93S | .018 | 22 | 8 |
| KTLP3507H | C10-408-08-01-XXX-R27-L14 | 01S | 93S | .018 | 9 | 6 |
| KTLP3616 | C10-308-08-01-XXX-R27-L14 | 01S | 93S | .018 | 22 | 8 |
| KTLP3616H | C10-408-08-01-XXX-R27-L14 | 01S | 93S | .018 | 9 | 6 |
| KTLP3617 | C10-308-08-01-XXX-R27-L14 | 01S | 93S | .018 | 22 | 8 |
| MK-0150 | C10-004-04-01-XXX-R27-L14 | 01S | 93S | .018 | 2 | 5 |
| P3-1A1500 | CSP472-02-01-XXX-R27-L14 | 01S | 93S | .018 | 17 | 7 |
| S1A050000 | C20-004-04-01-XXX-R27-L14 | 01S | 93S | .018 | 8 | 6 |
| S1A050099 | C20-004-04-01-XXX-R27-L14 | 01S | 93S | .018 | 8 | 6 |
| S1A120000 | C20-004-04-01-XXX-R27-L14 | 01S | 93S | .018 | 8 | 6 |
| S1A120098 | C20-004-04-01-XXX-R27-L14 | 01S | 93S | .018 | 8 | 6 |
| S1A120099 | C20-004-04-01-XXX-R27-L14 | 01S | 93S | .018 | 8 | 6 |
| S1A240000 | C20-004-04-01-XXX-R27-L14 | 01S | 93S | .018 | 8 | 6 |
| SS1A050000 | C20-005-04-01-XXX-R27-L14 | 01S | 93S | .018 | 10 | 6 |
| SS1A050099 | C20-005-04-01-XXX-R27-L14 | 01S | 93S | .018 | 10 | 6 |
| SS1A120000 | C20-005-04-01-XXX-R27-L14 | 01S | 93S | .018 | 10 | 6 |
| SS1A120098 | C20-005-04-01-XXX-R27-L14 | 01S | 93S | .018 | 10 | 6 |
| SS1A120099 | C20-005-04-01-XXX-R27-L14 | 01S | 93S | .018 | 10 | 6 |
| SS1A240000 | C20-005-04-01-XXX-R27-L14 | 01S | 93S | .018 | 10 | 6 |
| SS1C050000 | C20-005-04-01-XXX-R27-L14 | 01S | 93S | .018 | 10 | 6 |
| SS1C120000 | C20-005-04-01-XXX-R27-L14 | 01S | 93S | .018 | 10 | 6 |
| SS1C240000 | C20-005-04-01-XXX-R27-L14 | 01S | 93S | .018 | 10 | 6 |

See last page for other mounting types including low profile options.
Heat sink socket available to reduce heat and noise. Contact Andon for details.

COSMO ELECTRONICS CORPORATION *Continued*

Top View Shown

Units: in [mm]

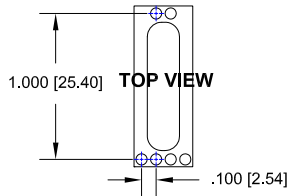


FIG. 1

Thru-Hole: C10-1008-06-01-01S-R27-L14
Surface Mount: C10-1008-06-01-93S-R27-L14

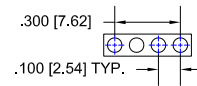


FIG. 2

Thru-Hole: C10-004-04-01-01S-R27-L14
Surface Mount: C10-004-04-01-93S-R27-L14

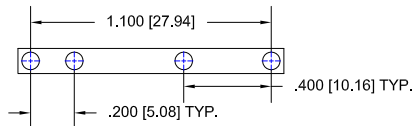


FIG. 3

Thru-Hole: C10-012-04-01-436P55-R27-L14
Surface Mount: C10-012-04-01-440P55-R27-L14

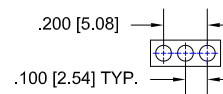


FIG. 4

Thru-Hole: C10-003-03-01-01S-R27-L14
Surface Mount: C10-003-03-01-93S-R27-L14

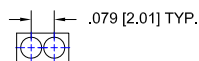


FIG. 5

Thru-Hole: CSP079-02-01-01S-R27-L14
Surface Mount: CSP079-02-01-93S-R27-L14

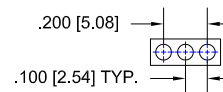


FIG. 6

Thru-Hole: C10-003-03-01-01P28-R27-L14
Surface Mount: C10-003-03-01-93P28-R27-L14

COSMO ELECTRONICS CORPORATION *Continued*

Top View Shown

Units: in [mm]

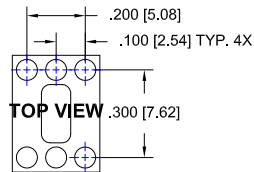


FIG. 7

Thru-Hole: C10-306-06-01-01S-R27-L14
Surface Mount: C10-306-06-01-93S-R27-L14

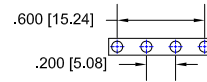


FIG. 8

Thru-Hole: C20-004-04-01-01S-R27-L14
Surface Mount: C20-004-04-01-93S-R27-L14

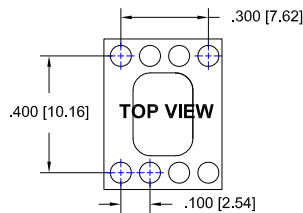


FIG. 9

Thru-Hole: C10-408-08-01-01S-R27-L14
Surface Mount: C10-408-08-01-93S-R27-L14

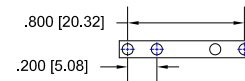


FIG. 10

Thru-Hole: C20-005-04-01-01S-R27-L14
Surface Mount: C20-005-04-01-93S-R27-L14

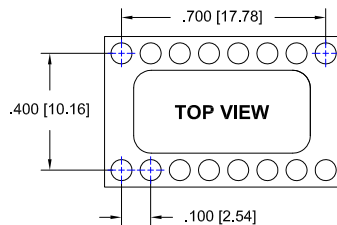


FIG. 11

Thru-Hole: C10-416-16-01-01S-R27-L14
Surface Mount: C10-416-16-01-93S-R27-L14

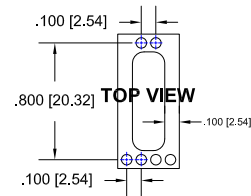


FIG. 12

Thru-Hole: C10-808-06-02-01S-R27-L14
Surface Mount: C10-808-06-02-93S-R27-L14

COSMO ELECTRONICS CORPORATION *Continued*

Top View Shown

Units: in [mm]

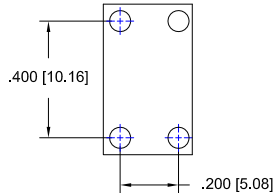


FIG. 13

Thru-Hole: C10-406-04-01-01S-R27-L14
Surface Mount: C10-406-04-01-93S-R27-L14

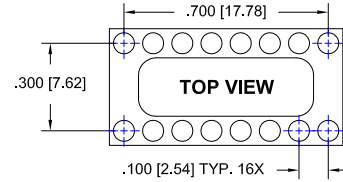


FIG. 14

Thru-Hole: C10-316-16-01-01S-R27-L14
Surface Mount: C10-316-16-01-93S-R27-L14

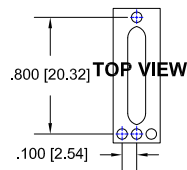


FIG. 15

Thru-Hole: C10-806-04-01-01S-R27-L14
Surface Mount: C10-806-04-01-93S-R27-L14

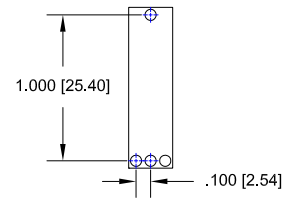


FIG. 16

Thru-Hole: C10-1006-04-01-01S-R27-L14
Surface Mount: C10-1006-04-01-93S-R27-L14

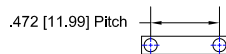


FIG. 17

Thru-Hole: CSP472-02-01-01S-R27-L14
Surface Mount: CSP472-02-01-93S-R27-L14

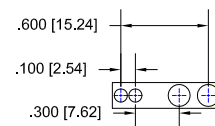


FIG. 18

Thru-Hole: CSP600-04-01-507EP72-R27-L14
Surface Mount: CSP600-04-01-508EP72-R27-L14

COSMO ELECTRONICS CORPORATION *Continued*

Top View Shown

Units: in [mm]

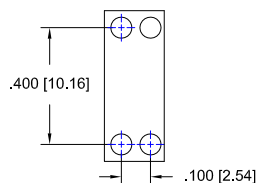


FIG. 19

Thru-Hole: C10-404-04-02-01S-R27-L14
Surface Mount: C10-404-04-02-93S-R27-L14

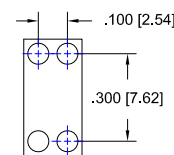


FIG. 20

Thru-Hole: C10-304-04-01-01S-R27-L14
Surface Mount: C10-304-04-01-93S-R27-L14

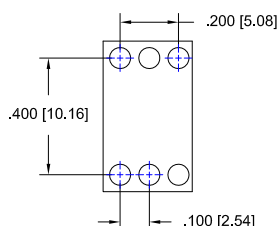


FIG. 21

Thru-Hole: C10-406-06-01-01S-R27-L14
Surface Mount: C10-406-06-01-93S-R27-L14

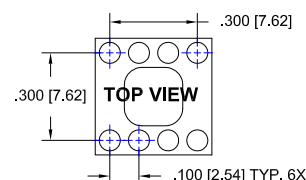


FIG. 22

Thru-Hole: C10-308-08-01-01S-R27-L14
Surface Mount: C10-308-08-01-93S-R27-L14

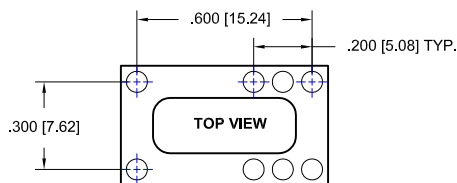


FIG. 23

Thru-Hole: C10-314-08-01-01S-R27-L14
Surface Mount: C10-314-08-01-93S-R27-L14

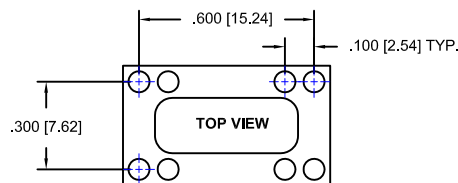


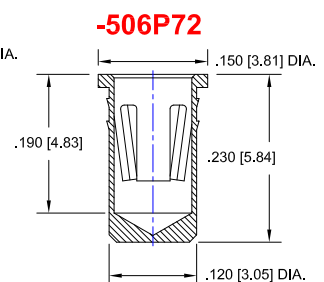
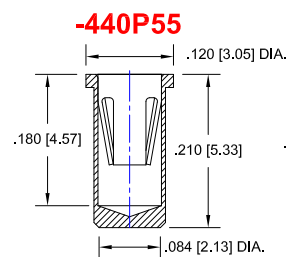
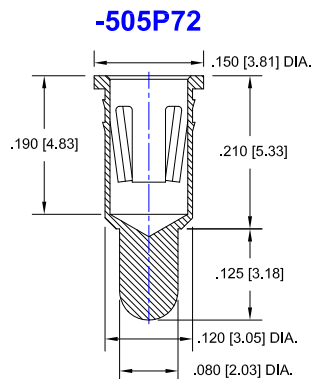
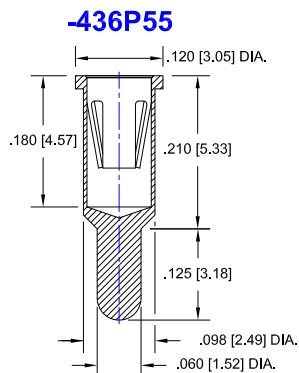
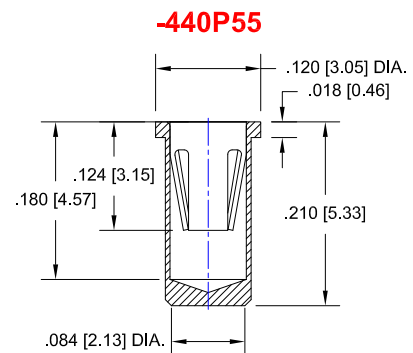
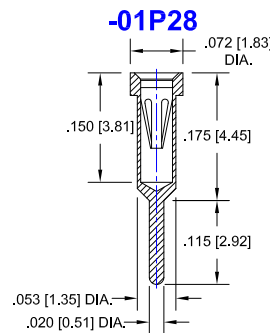
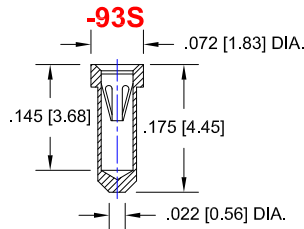
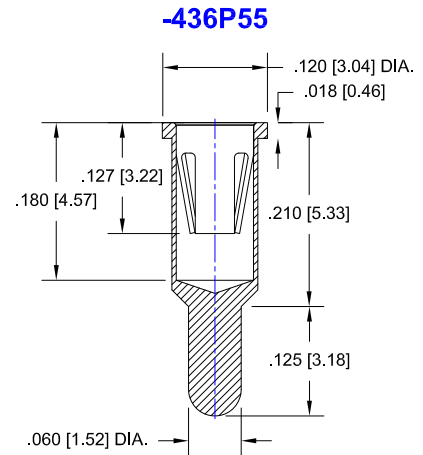
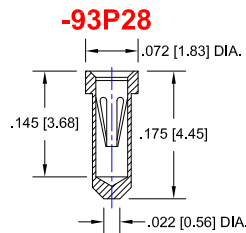
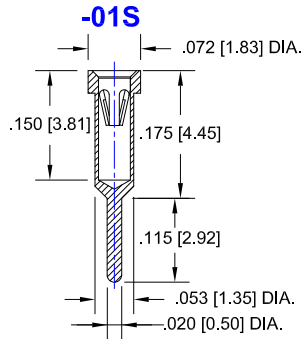
FIG. 24

Thru-Hole: C10-314-08-02-01S-R27-L14
Surface Mount: C10-314-08-02-93S-R27-L14

COSMO ELECTRONICS CORPORATION *Continued*

Socket Terminal Details

Cross Section View Shown Units: in [mm]



-507EP72

-508EP72

COSMO ELECTRONICS CORPORATION *Continued*

Socket Terminal Details

Cross Section View Shown Units: in [mm]

Technical Information

Material:

Insulator: Hi-Temp UL 94V-O
Terminal: Brass, per ASTM-B16
Contact: BeCu, Per ASTM-B194

Plating: RoHS COMPLIANT

R17 TERMINAL: MATTE TIN / CONTACT: GOLD

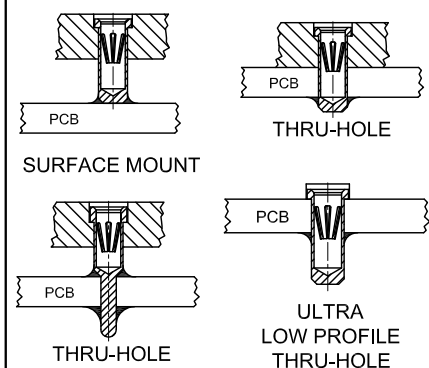
R27 TERMINAL: GOLD / CONTACT: GOLD

R32 TERMINAL: MATTE TIN / CONTACT: TIN
OTHER PLATINGS AVAILABLE

Terminal Acceptance and Forces

| Thru Hole Terminals | | | | Surface Mount Terminals | | | |
|---------------------|----------------------|-----------------|------------------|-------------------------|----------------------|-----------------|------------------|
| Thru Hole Terminal | Accepts Pin Diameter | Insertion Force | Withdrawal Force | Surface Mount Terminal | Accepts Pin Diameter | Insertion Force | Withdrawal Force |
| -01P28 | Ø.028 [Ø0.71] | 0.70 oz Avg. | 0.35 oz Min | -93P28 | Ø.028 [Ø0.71] | 0.70 oz Avg. | 0.35 oz Min |
| -433E | Ø.040 [Ø1.02] | 36.0 oz Avg. | 3.9 oz Min | -285E | Ø.040 [Ø1.02] | 36.0 oz Avg. | 3.9 oz Min |
| -01S | Ø.018 [Ø0.46] | 9.0 oz Avg. | 2.0 oz Min | -93S | Ø.018 [Ø0.46] | 9.0 oz Avg. | 2.0 oz Min |
| -505P72 | Ø.082 [Ø2.08] | 48.0 oz Avg. | 8.0 oz Min | -506P72 | Ø.082 [Ø2.08] | 48.0 oz Avg. | 8.0 oz Min |
| -436P55 | Ø.062 [Ø1.57] | 15.5 oz Avg. | 2.1 oz Min | -440P55 | Ø.062 [Ø1.57] | 15.5 oz Avg. | 2.1 oz Min |

MOUNTING OPTIONS



©Copyright 2017 Andon Electronics Corporation. All Rights Reserved. This material is protected under US and other copyrights and may not be copied, sold, or redistributed in any form without written permission of Andon Electronics Corporation. Copyrights and trademarks are property of their respective companies. We reserve the right to change specifications without notice. Andon makes no warranty, expressed or implied, as to the suitability of the sockets for the intended purpose.

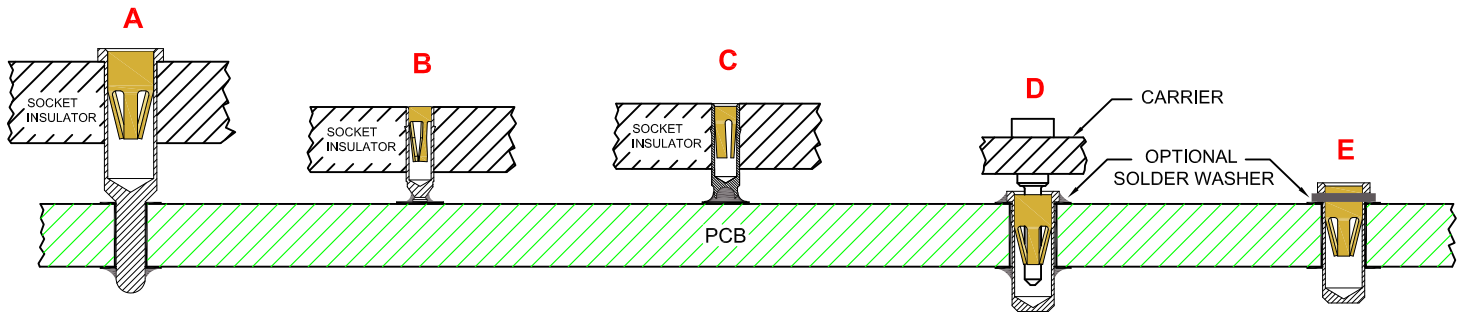
"ANDON PROPRIETARY INFORMATION"
RoHS Compliant

2/20/2017

*Sockets are not drawn to scale COSMO ELECTRONICS CORPORATION

ANDON ELECTRONICS CORPORATION
4 Court Drive, Lincoln RI 02865, United States of America

www.andonelectronics.com or www.andonelect.com
Phone 401-333-0388 Fax 401-333-0287
Email Info@andonelect.com



**THRU-HOLE
SOCKET**

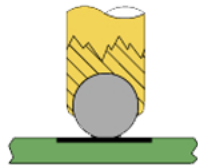
SMD-SOCKET

**SMD
ROLLERBALL®
SOCKET
(PATENTED)**

**REMOVABLE
CARRIER
WITH ULTRA-LOW
PROFILE PIN SOCKETS**

**INDIVIDUAL
ULTRA-LOW PROFILE
PIN SOCKETS
(BEFORE SOLDERING)**

**ROLLERBALL®
SOCKET**



BEFORE SOLDERING

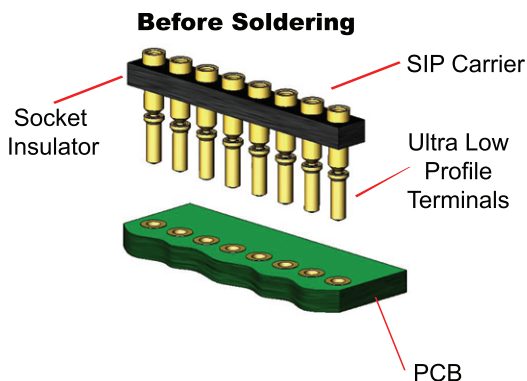
**ROLLERBALL®
SOCKET**



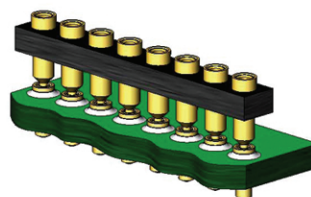
AFTER SOLDERING

A more reliable solder joint for surface mount applications !

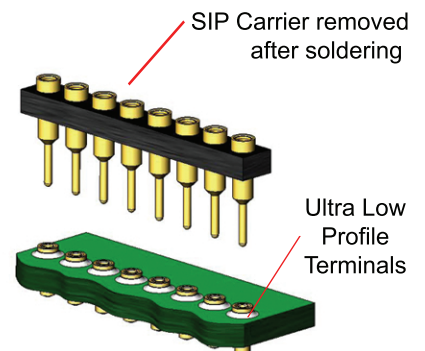
ULTRA LOW PROFILE SIP/DIP/PGA CARRIER ASSEMBLY See 'D' above



During Soldering



After Soldering



Available with or without solder washer