

DIAS Infrared System Sockets						
DIAS Infrared System Model Number	Andon Part Number Replace "XXX" with Terminal Type	Terminal Type		Pin Ø [in]	Figure Number	Page Number
		Thru-Hole	Surface Mount			
2LTA G2	R200-0404-01T-XXX-R27-L14	01S	93S	.018	3	2
2LTA G2C10	R400-SP12-01T-XXX-R27-L14	01S	93S	.018	5	2
2LTA G2C100	R200-0404-01T-XXX-R27-L14	01S	92S	.018	3	2
2LTA G21100	R400-SP08-01T-XXX-R27-L14	01S	93S	.018	4	2
2LTA G21100PC	R400-SP08-01T-XXX-R27-L14	01S	93S	.018	4	2
2LTA G2PC	R400-SP12-02T-XXX-R27-L14	01S	93S	.018	5	2
3LTA G21100	R400-SP08-01T-XXX-R27-L14	01S	93S	.018	4	2
4LTA G2	R400-SP12-02T-XXX-R27-L14	01S	93S	.018	5	2
2LTA G2C10PC	R400-SP12-01T-XXX-R27-L14	01S	93S	.018	5	2
4LTA G21100	R400-SP08-01T-XXX-R27-L14	01S	93S	.018	4	2
4LTA G21100PC	R400-SP08-01T-XXX-R27-L14	01S	93S	.018	4	2
LT D1	R200-0403-03T-XXX-R27-L14	01S	93S	.018	2	2
LT D2	R200-0403-03T-XXX-R27-L14	01S	93S	.018	2	2
LT D2.5	R200-0403-03T-XXX-R27-L14	01S	93S	.018	2	2
LT G1.2	R100-0404-01T-XXX-R27-L14	75S	265S	.018	3	2
LT G2	R200-0403-03T-XXX-R27-L14	01S	93S	.018	2	2
LT G2PC	R200-0403-03T-XXX-R27-L14	01S	93S	.018	2	2
LT Q0.5	R200-0403-03T-XXX-R27-L14	01S	93S	.018	2	2
LT Q1	R200-0403-03T-XXX-R27-L14	01S	93S	.018	2	2
LT Q1.2	R200-0403-03T-XXX-R27-L14	01S	93S	.018	2	2
LT Q2	R200-0403-03T-XXX-R27-L14	01S	93S	.018	2	2
LTA G1.2	R100-0404-01T-XXX-R27-L14	75S	265S	.018	3	2
LTA G2	R200-0403-03T-XXX-R27-L14	01S	93S	.018	2	2
LTA G2C10	R200-0403-03T-XXX-R27-L14	01S	93S	.018	2	2
LTA G2C10PC	R200-0403-03T-XXX-R27-L14	01S	93S	.018	2	2
LTA G2C100	R200-0403-03T-XXX-R27-L14	01S	93S	.018	2	2
LTA G2C100PC	R200-0403-03T-XXX-R27-L14	01S	93S	.018	2	2
LTA G2110	R200-0404-01T-XXX-R27-L14	01S	93S	.018	3	2
LTA G2110PC	R200-0404-01T-XXX-R27-L14	01S	93S	.018	3	2
LTA G211100	R200-0404-01T-XXX-R27-L14	01S	93S	.018	3	2
LTA G211100PC	R200-0404-01T-XXX-R27-L14	01S	93S	.018	3	2
LTA G2PC	R200-0403-03T-XXX-R27-L14	01S	93S	.018	2	2
LTI D1	R200-0403-03T-XXX-R27-L14	01S	93S	.018	2	2
LTI D2	R200-0403-03T-XXX-R27-L14	01S	93S	.018	2	2
LTI Q0.5	R200-0403-03T-XXX-R27-L14	01S	93S	.018	2	2
LTI Q1	R200-0403-03T-XXX-R27-L14	01S	93S	.018	2	2
LTI Q1.2	R200-0403-03T-XXX-R27-L14	01S	93S	.018	2	2
LTI Q2	R200-0403-03T-XXX-R27-L14	01S	93S	.018	2	2
LTI Q2110	R200-0404-01T-XXX-R27-L14	01S	93S	.018	3	2
LTI Q21100	R200-0404-01T-XXX-R27-L14	01S	93S	.018	3	2
LTS D1	R200-0403-03T-XXX-R27-L14	01S	93S	.018	2	2
LTS D2	R200-0403-03T-XXX-R27-L14	01S	93S	.018	2	2
LTS D2.5	R200-0403-03T-XXX-R27-L14	01S	93S	.018	2	2
LTS Q1	R200-0403-03T-XXX-R27-L14	01S	93S	.018	2	2
LTS Q1.2	R200-0403-03T-XXX-R27-L14	01S	93S	.018	2	2
LTS Q2	R200-0403-03T-XXX-R27-L14	01S	93S	.018	2	2
LTAI G2	R200-0403-03T-XXX-R27-L14	01S	93S	.018	2	2
LTSI D1	R200-0403-03T-XXX-R27-L14	01S	93S	.018	2	2
LTSI D2	R200-0403-03T-XXX-R27-L14	01S	93S	.018	2	2
LTSI Q1	R200-0403-03T-XXX-R27-L14	01S	93S	.018	2	2
LTSI Q1.2	R200-0403-03T-XXX-R27-L14	01S	93S	.018	2	2
LTSI Q2	R200-0403-03T-XXX-R27-L14	01S	93S	.018	2	2
LTSI Q2110	R200-0404-01T-XXX-R27-L14	01S	93S	.018	3	2
LTSI Q21100	R200-0404-01T-XXX-R27-L14	01S	93S	.018	3	2

DIAS Infrared System Sockets *Continued*

Top View Shown

Units: in [mm]

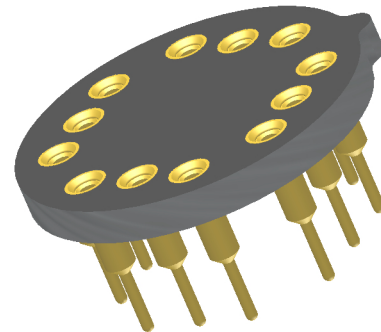
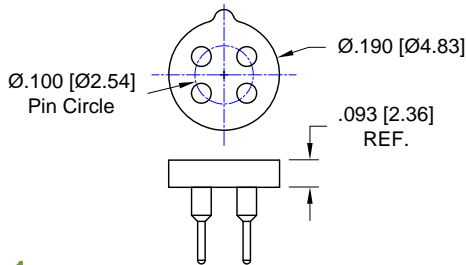


Fig. 1

Thru-Hole: R100-0404-02T-75S-R27-L14
Surface Mount: R100-0404-02T-265S-R27-L14

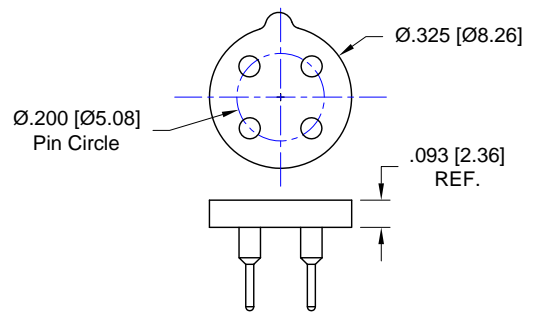
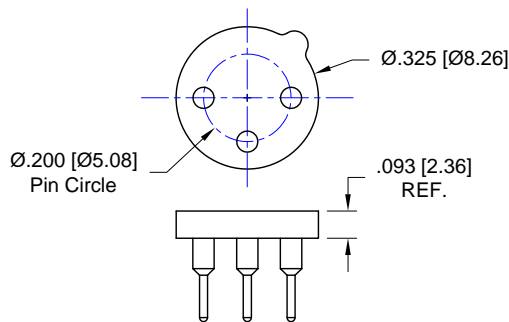


Fig. 2

Thru-Hole: R200-0403-03T-01S-R27-L14
Surface Mount: R200-0403-03T-93S-R27-L14

Fig. 3

Thru-Hole: R200-0404-01T-01S-R27-L14
Surface Mount: R200-0404-01T-93S-R27-L14

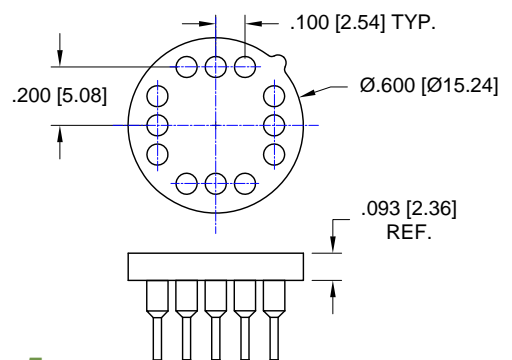
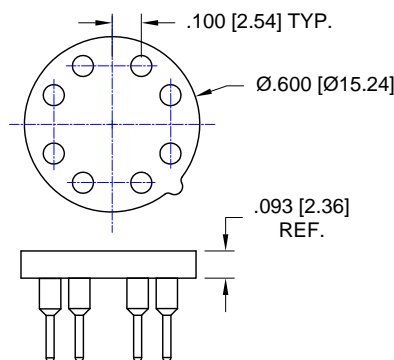


Fig. 4

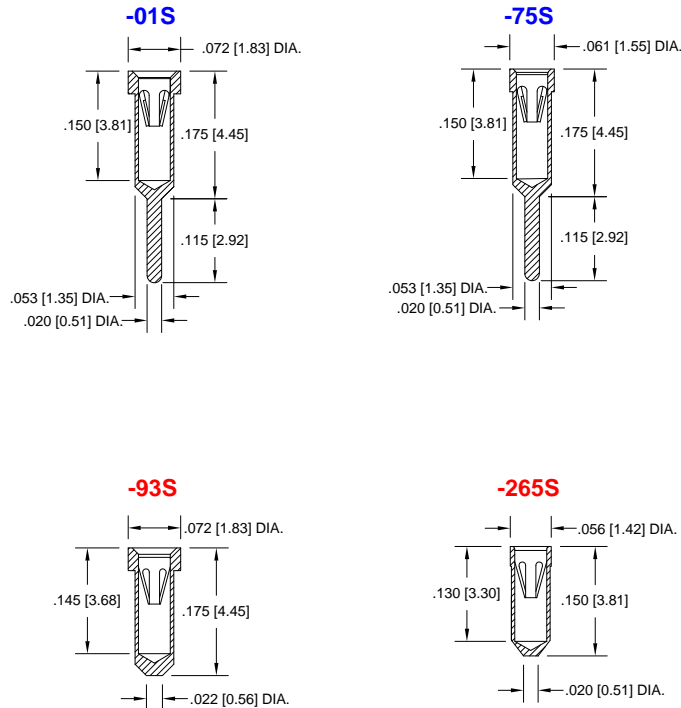
Thru-Hole: R400-SP08-01T-01S-R27-L14
Surface Mount: R400-SP08-01T-93S-R27-L14

Fig. 5

Thru-Hole: R400-SP12-02T-01S-R27-L14
Surface Mount: R400-SP12-02T-93S-R27-L14

DIAS Infrared System Sockets *Continued*

Socket Terminal Details Cross Section View Shown Units: in [mm]



Technical Information

Material:

Insulator: Hi-Temp UL 94V-O
Terminal: Brass, per ASTM-B16
Contact: BeCu, Per ASTM-B194

Plating: RoHS COMPLIANT

R27 TERMINAL: GOLD / CONTACT: GOLD

R17 TERMINAL: TIN / CONTACT: GOLD

OTHER PLATINGS AVAILABLE

Terminal Acceptance and Forces

Thru Hole Terminals		Surface Mount Terminals					
Thru Hole Terminal	Accepts Pin Diameter	Insertion Force	Withdrawal Force	Surface Mount Terminal	Accepts Pin Diameter	Insertion Force	Withdrawal Force
-01S	Ø.018 [Ø0.46]	9.0 oz Avg.	2.0 oz Min	-93S	Ø.018 [Ø0.46]	9.0 oz Avg.	2.0 oz Min
-75S	Ø.018 [Ø0.46]	9.0 oz Avg.	2.0 oz Min	-265S	Ø.018 [Ø0.46]	9.0 oz Avg.	2.0 oz Min

MOUNTING OPTIONS

