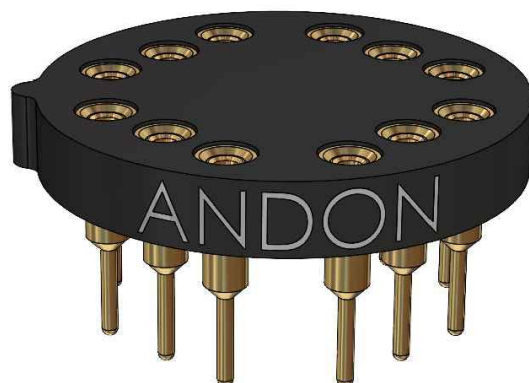




HIGH RELIABILITY OPTOELECTRONIC SOCKETS FOR LASER COMPONENTS, GmbH.



Featuring Andon's Unique SenstacTM Contact

LASER COMPONENTS GMBH						
LASER COMPONENTS GMBH Model Number	Andon Part Number Replace "XXX" with Terminal Type	Terminal Type		Pin Ø [in]	Figure Number	Page Number
		Thru-Hole	Surface Mount			
4100	R200-0404-01T-XXX-R27-L14	01S	93S	.018	13	8
(IG17) (IG19)	F425-1009-01-XXX-R27-L14	295V	439V	.030	16	8
(PACKAGE) G + T	R080-0403-01N-XXX-R27-L14	274K	281K	.018	15	8
4000-TO18 SERIES	R100-0403-02T-XXX-R27-L14	C2	N/A	.018	9	7
4000-TO5 SERIES	R200-0404-01T-XXX-R27-L14	01S	93S	.018	13	8
4105TC	R200-0403-02T-XXX-R27-L14	01S	93S	.018	12	7
4118TC	R200-0403-02T-XXX-R27-L14	01S	93S	.018	12	7
4218 TC	R200-0404-01T-XXX-R27-L14	01S	93S	.018	13	8
4500 SERIES	R200-0404-01T-XXX-R27-L14	01S	93S	.018	13	8
5000-TO18 SERIES	R100-0403-02T-XXX-R27-L14	C2	N/A	.018	9	7
5000-TO5 SERIES	R200-0404-01T-XXX-R27-L14	01S	93S	.018	13	8
5100 SERIES	R200-0404-01T-XXX-R27-L14	01S	93S	.018	13	8
5500 SERIES	R200-0404-01T-XXX-R27-L14	01S	93S	.018	13	8
6-2D-LD78-002	R080-0403-01N-XXX-R27-L14	274K	281K	.018	15	8
6-2D-LD80-002	R080-0403-01N-XXX-R27-L14	274K	281K	.018	15	8
6-2D-LD85-017	R080-0403-01N-XXX-R27-L14	274K	281K	.018	15	8
905D1S3J0XX-S	R100-0402-03T-XXX-R27-L14	75S	265S	.018	5	6
905D1S3J0XXR	R080-0403-01N-XXX-R27-L14	274K	281K	.018	15	8
905D1S3J0XXU	R080-0403-01N-XXX-R27-L14	274K	281K	.018	15	8
905D1SXXUA-SERIES	R080-0403-01N-XXX-R27-L14	274K	281K	.018	15	8
905D3J08-SERIES	R080-0403-01N-XXX-R27-L14	274K	281K	.018	15	8
905D3J09-SERIES	R100-0402-03T-XXX-R27-L14	75S	265S	.018	5	6
905-SERIES	R100-0402-03T-XXX-R27-L14	75S	265S	.018	5	6
ABC 550-SERIES	C10-1324-09-01-XXX-R27-L14	295V	439V	.030	17	8
ADE-BT001	R080-0403-01N-XXX-R27-L14	274K	281K	.018	15	8
ADL-63054SA2	R050-0403-01N-XXX-R27-L14	437T	329T	.010	21	9
ADL-63054TA2	R080-0403-01N-XXX-R27-L14	274K	281K	.018	15	8
ADL-63054TL	R080-0403-01N-XXX-R27-L14	274K	281K	.018	15	8
ADL-63059TU	R080-0403-01N-XXX-R27-L14	274K	281K	.018	15	8
ADL-63102TL-3	R080-0403-01N-XXX-R27-L14	274K	281K	.018	15	8
ADL-63153TL	R080-0403-01N-XXX-R27-L14	274K	281K	.018	15	8
ADL-63302TL	R080-0403-01N-XXX-R27-L14	274K	281K	.018	15	8
ADL-63302TU	R080-0403-01N-XXX-R27-L14	274K	281K	.018	15	8
ADL-63V0ANP	R100-0403-04N-XXX-R27-L14	211S	265S	.018	20	9
ADL-63V0BTP	R080-0403-01N-XXX-R27-L14	274K	281K	.018	15	8
ADL-65052TL	R080-0403-01N-XXX-R27-L14	274K	281K	.018	15	8
ADL-65053TL-2	R080-0403-01N-XXX-R27-L14	274K	281K	.018	15	8
ADL-65055GA2	R080-0403-01N-XXX-R27-L14	274K	281K	.018	15	8
ADL-65055SA2	R050-0403-01N-XXX-R27-L14	437T	329T	.010	21	9
ADL-65055TA2	R080-0403-01N-XXX-R27-L14	274K	281K	.018	15	8
ADL-65055TL	R080-0403-01N-XXX-R27-L14	274K	281K	.018	15	8
ADL-65074TL-1	R080-0403-01N-XXX-R27-L14	274K	281K	.018	15	8
ADL-65074TR	R080-0403-01N-XXX-R27-L14	274K	281K	.018	15	8
ADL-65074TU-1	R080-0403-01N-XXX-R27-L14	274K	281K	.018	15	8
ADL-65075SA2	R050-0403-01N-XXX-R27-L14	437T	329T	.010	21	9
ADL-65075SL	R050-0403-01N-XXX-R27-L14	437T	329T	.010	21	9
ADL-65075SR	R050-0403-01N-XXX-R27-L14	437T	329T	.010	21	9
ADL-65075TA2	R080-0403-01N-XXX-R27-L14	274K	281K	.018	15	8
ADL-65075TL	R080-0403-01N-XXX-R27-L14	274K	281K	.018	15	8
ADL-65075TL-4	R080-0403-01N-XXX-R27-L14	274K	281K	.018	15	8
ADL-65075TU-1	R080-0403-01N-XXX-R27-L14	274K	281K	.018	15	8
ADL-65077SR	R050-0403-01N-XXX-R27-L14	437T	329T	.010	21	9
ADL-65077SU	R050-0403-01N-XXX-R27-L14	437T	329T	.010	21	9
ADL-65078TU-1	R080-0403-01N-XXX-R27-L14	274K	281K	.018	15	8

See last page for other mounting types including low profile options.
Heat sink socket available to reduce heat and noise. Contact Andon for details.

LASER COMPONENTS GMBH						
LASER COMPONENTS GMBH Model Number	Andon Part Number Replace "XXX" with Terminal Type	Terminal Type		Pin Ø [in]	Figure Number	Page Number
		Thru-Hole	Surface Mount			
ADL-65103TL	R080-0403-01N-XXX-R27-L14	274K	281K	.018	15	8
ADL-65104TL	R080-0403-01N-XXX-R27-L14	274K	281K	.018	15	8
ADL-66201TL	R080-0403-01N-XXX-R27-L14	274K	281K	.018	15	8
ADL-66505TL	R080-0403-01N-XXX-R27-L14	274K	281K	.018	15	8
ADL-66505TU	R080-0403-01N-XXX-R27-L14	274K	281K	.018	15	8
ADL-66505TX	R080-0403-01N-XXX-R27-L14	274K	281K	.018	15	8
ADL-66801DL	R080-0403-01N-XXX-R27-L14	274K	281K	.018	15	8
ADL-78051SA2	R050-0403-01N-XXX-R27-L14	437T	329T	.010	21	9
ADL-78051TL	R080-0403-01N-XXX-R27-L14	274K	281K	.018	15	8
ADL-78051TR	R080-0403-01N-XXX-R27-L14	274K	281K	.018	15	8
ADL-78051TU	R080-0403-01N-XXX-R27-L14	274K	281K	.018	15	8
ADL-78101TL	R080-0403-01N-XXX-R27-L14	274K	281K	.018	15	8
ADL-80X01TZ	R080-0403-01N-XXX-R27-L14	274K	281K	.018	15	8
ADL-80Y05TL	R080-0403-01N-XXX-R27-L14	274K	281K	.018	15	8
ADL-80Y05TU	R080-0403-01N-XXX-R27-L14	274K	281K	.018	15	8
ADL-83Z01TL	R080-0403-01N-XXX-R27-L14	274K	281K	.018	15	8
ADL-83Z01TX	R080-0403-01N-XXX-R27-L14	274K	281K	.018	15	8
ADL-85051SL	R050-0403-01N-XXX-R27-L14	437T	329T	.010	21	9
ADL-85051TA2	R080-0403-01N-XXX-R27-L14	274K	281K	.018	15	8
ADL-85051TL	R080-0403-01N-XXX-R27-L14	274K	281K	.018	15	8
ADL-85071SA2	R050-0403-01N-XXX-R27-L14	437T	329T	.010	21	9
ADL-85301TL	R080-0403-01N-XXX-R27-L14	274K	281K	.018	15	8
ADL-85501TL	R080-0403-01N-XXX-R27-L14	274K	281K	.018	15	8
BTF MODULE	C10-007-07-01-XXX-R27-L14	556S	N/A	.018	14	8
DFB-LASER	R100-0403-02T-XXX-G10-L14	C2	N/A	.018	9	7
G1	R100-0403-02T-XXX-G10-L14	C2	N/A	.018	9	7
G1I	R100-0403-02T-XXX-G10-L14	C2	N/A	.018	9	7
H1 SERIES	R400-SP12-03T-XXX-R27-L14	01S	93S	.018	4	6
H3	R100-0805-01N-XXX-G10-L14	C2	N/A	.018	2	6
H4	R100-0805-01N-XXX-G10-L14	C2	N/A	.018	2	6
H5-SERIES	R100-0805-01N-XXX-G10-L14	C2	N/A	.018	2	6
HO-SERIES	R100-0805-01N-XXX-G10-L14	C2	N/A	.018	2	6
HS	R100-0805-01N-XXX-G10-L14	C2	N/A	.018	2	6
HV1000-SERIES	C10-1218-11-01-XXX-R27-L14	295V	439V	.030	18	8
IAG-SERIES	R375-SP06-02T-XXX-R27-L14	75S	384S	.018	8	7
IG17-G1I	R200-0403-02T-XXX-R27-L14	01S	93S	.018	12	7
IG17-S4I	R100-0403-04N-XXX-R27-L14	211S	265S	.018	20	9
IG17-T7	F200-1006-02-XXX-R27-L14	274K	281K	.018	10	7
IG17-T9	F425-1009-01-XXX-R27-L14	295V	439V	.030	16	8
IG22-S4I	R100-0403-04N-XXX-R27-L14	211S	265S	.018	20	9
IG22-SERIES	C10-828-28-01-XXX-R27-L14	01S	93S	.018	11	7
IG22-TO-5	R200-0403-02T-XXX-R27-L14	01S	93S	.018	12	7
L5	R100-0403-02T-XXX-G10-L14	C2	N/A	.018	9	7
LCD-5100 SERIES	R200-0404-01T-XXX-R27-L14	01S	93S	.018	13	8
LCD-5500CM	R200-0404-01T-XXX-R27-L14	01S	93S	.018	13	8
LCDT-4000-TO-18	R100-0403-04N-XXX-R27-L14	211S	265S	.018	20	9
LCDT-5000-TO-18	R100-0403-04N-XXX-R27-L14	211S	265S	.018	20	9
LCDT-5000-TO-5	R200-0404-01T-XXX-R27-L14	01S	93S	.018	13	8
LCDT-5100 SERIES	R200-0404-01T-XXX-R27-L14	01S	93S	.018	13	8
LCDT-5500 SERIES	R200-0404-01T-XXX-R27-L14	01S	93S	.018	13	8
LCDT-5500CM SERIES	R200-0404-01T-XXX-R27-L14	01S	93S	.018	13	8
LCLT-4000 SERIES	R100-0403-02T-XXX-G10-L14	C4	N/A	.018	9	7
LCLT-4000-TO-5	R200-0404-01T-XXX-R27-L14	01S	93S	.018	13	8
LCLT-40XX	R200-0404-01T-XXX-R27-L14	437T	329T	.010	1	6
LCLT-4100 SERIES	R200-0404-01T-XXX-R27-L14	01S	93S	.018	13	8

See last page for other mounting types including low profile options.
Heat sink socket available to reduce heat and noise. Contact Andon for details.

LASER COMPONENTS GMBH						
LASER COMPONENTS GMBH Model Number	Andon Part Number Replace "XXX" with Terminal Type	Terminal Type		Pin Ø [in]	Figure Number	Page Number
		Thru-Hole	Surface Mount			
LCLT-4100TC	R200-0403-02T-XXX-R27-L14	01S	93S	.018	12	7
LCLT-4200TC SERIES	R200-0404-01T-XXX-R27-L14	01S	93S	.018	13	8
LCLT-4500CM SERIES	R200-0404-01T-XXX-R27-L14	01S	93S	.018	13	8
LCLT-4500CM SERIES	R200-0404-01T-XXX-R27-L14	01S	93S	.018	13	8
LCQ7853035N/M/P	R080-0403-01N-XXX-R27-L14	274K	281K	.018	15	8
LCQ90510S5-N/MP	R080-0403-01N-XXX-R27-L14	274K	281K	.018	15	8
LCU80B051A	R080-0403-01N-XXX-R27-L14	274K	281K	.018	15	8
LCU80B056D	R080-0403-01N-XXX-R27-L14	274K	281K	.018	15	8
LCU80C056D	R080-0403-01N-XXX-R27-L14	274K	281K	.018	15	8
LCU80E051A-A	R080-0403-01N-XXX-R27-L14	274K	281K	.018	15	8
LCU80E056D	R100-0403-04N-XXX-R27-L14	211S	265S	.018	20	9
LCU80J044D	R100-0403-04N-XXX-R27-L14	211S	265S	.018	20	9
LCU-835051A	R080-0403-01N-XXX-R27-L14	274K	281K	.018	15	8
LCU-83C051A	R080-0403-01N-XXX-R27-L14	274K	281K	.018	15	8
LCU83E051A	R080-0403-01N-XXX-R27-L14	274K	281K	.018	15	8
LCU-85A051A	R080-0403-01N-XXX-R27-L14	274K	281K	.018	15	8
LCU-85C051A	R080-0403-01N-XXX-R27-L14	274K	281K	.018	15	8
LCU85E051A	R080-0403-01N-XXX-R27-L14	274K	281K	.018	15	8
LCU-881061A	R080-0403-01N-XXX-R27-L14	274K	281K	.018	15	8
LCU982561A	R080-0403-01N-XXX-R27-L14	274K	281K	.018	15	8
LCU985041A	R080-0403-01N-XXX-R27-L14	274K	281K	.018	15	8
LCU98A041A	R080-0403-01N-XXX-R27-L14	274K	281K	.018	15	8
LCU98A046D	R080-0403-01N-XXX-R27-L14	274K	281K	.018	15	8
LCU98B041A	R080-0403-01N-XXX-R27-L14	274K	281K	.018	15	8
LCU-98B046D	R080-0403-01N-XXX-R27-L14	274K	281K	.018	15	8
LCU98C046D	R080-0403-01N-XXX-R27-L14	274K	281K	.018	15	8
LCU98E046D	R080-0403-01N-XXX-R27-L14	274K	281K	.018	15	8
LT1 1/21-SERIES	R200-0404-01T-XXX-R27-L14	01S	93S	.018	13	8
LT1100x2020	R200-0404-01T-XXX-R27-L14	01S	93S	.018	13	8
LT1150M3030	R200-0403-02T-XXX-R27-L14	01S	93S	.018	12	7
LT1240x1810	R200-0404-01T-XXX-R27-L14	01S	93S	.018	13	8
LT1x/2x-SERIES	R200-0404-01T-XXX-R27-L14	01S	93S	.018	13	8
LT2300M1212	R200-0404-01T-XXX-R27-L14	01S	93S	.018	13	8
N PACKAGE	R100-0403-04N-XXX-R27-L14	211S	265S	.018	20	9
PACKAGE E1 TO-8	R400-0803-02T-XXX-R27-L14	01S	93S	.018	23	9
PACKAGE F2 TO-46	R100-0402-03T-XXX-R27-L14	75S	265S	.018	5	6
PACKAGE G1 TO-5	R200-0403-02T-XXX-R27-L14	01S	93S	.018	12	7
PACKAGE L3 TO-46	R095-SP03-01T-XXX-R27-L14	274K	281K	.018	3	6
PACKAGE N	R100-0403-04N-XXX-R27-L14	211S	265S	.018	20	9
PACKAGE R 9 MM CD	R100-0403-04N-XXX-R27-L14	211S	265S	.018	20	9
PACKAGE S	R050-0403-01N-XXX-R27-L14	437T	329T	.010	21	9
PACKAGE S TO-18	R100-0402-03T-XXX-R27-L14	75S	265S	.018	5	6
PACKAGE S3 TO-46 (3 PIN)	R095-SP03-01T-XXX-R27-L14	274K	281K	.018	3	6
PACKAGE S5 TO-46 (2 PIN)	R100-SP02-02T-XXX-R27-L14	274K	281K	.018	6	6
PACKAGE S6 TO-46 (3 PIN)	R100-0403-02T-XXX-R27-L14	C2	N/A	.018	9	7
PACKAGE S7 TO-46 (LOW PROFILE)	R100-SP02-02T-XXX-R27-L14	274K	281K	.018	6	6
PACKAGE T6 TO-37	F200-1006-02-XXX-R27-L14	274K	281K	.018	10	7
PACKAGE T6 TO-37 (WITH TEC)	F200-1006-02-XXX-R27-L14	274K	281K	.018	10	7
PACKAGE T8 TO-8 (WITH TEC)	R375-SP06-02T-XXX-R27-L14	75S	384S	.018	8	7
PACKAGE U	R080-0403-01N-XXX-R27-L14	274K	281K	.018	15	8
PACKAGE U 5.6 MM CD	R080-0403-01N-XXX-R27-L14	274K	281K	.018	15	8
PACKAGE UA 5.6 MM CD	R080-0403-01N-XXX-R27-L14	274K	281K	.018	15	8
PACKAGE UA R	R080-0403-01N-XXX-R27-L14	274K	281K	.018	15	8
PACKAGES E1 TO-8	R400-0803-02T-XXX-R27-L14	01S	93S	.018	23	9

See last page for other mounting types including low profile options.
Heat sink socket available to reduce heat and noise. Contact Andon for details.

LASER COMPONENTS GMBH						
LASER COMPONENTS GMBH Model Number	Andon Part Number Replace "XXX" with Terminal Type	Terminal Type		Pin Ø [in]	Figure Number	Page Number
		Thru-Hole	Surface Mount			
PB25G20209	R100-0403-02T-XXX-G10-L14	C2	N/A	.018	9	7
PB25S10109M	R100-0403-02T-XXX-G10-L14	C2	N/A	.018	9	7
PB25S10109S	R100-0403-02T-XXX-G10-L14	C2	N/A	.018	9	7
PB25S20209M	R100-0403-02T-XXX-G10-L14	C2	N/A	.018	9	7
PB25S20209S	R100-0403-02T-XXX-G10-L14	C2	N/A	.018	9	7
PB25S30309M	R100-0403-02T-XXX-G10-L14	C2	N/A	.018	9	7
PB25S30309S	R100-0403-02T-XXX-G10-L14	C2	N/A	.018	9	7
PB27S1010T17M	F200-1006-02-XXX-R27-L14	274K	281K	.018	10	7
PB27S2020T17M	R100-0403-02T-XXX-G10-L14	C2	N/A	.018	9	7
PB27S3030T17M	R100-0403-02T-XXX-G10-L14	C2	N/A	.018	9	7
PB27S3030T19M	R200-1006-01T-XXX-R27-L14	274K	281K	.018	24	9
PB27S6060T1S6M	F375-SP06-01-XXX-R27-L14	274K	281K	.018	7	7
PB45S10104S	R100-0403-02T-XXX-G10-L14	C2	N/A	.018	9	7
PB45S10109M	R100-0403-02T-XXX-G10-L14	C2	N/A	.018	9	7
PB45S10109S	R100-0403-02T-XXX-G10-L14	C2	N/A	.018	9	7
PB45S20209M	R100-0403-02T-XXX-G10-L14	C2	N/A	.018	9	7
PB45S20209S	R100-0403-02T-XXX-G10-L14	C2	N/A	.018	9	7
PB45S30309M	R100-0403-02T-XXX-G10-L14	C2	N/A	.018	9	7
PB45S30309S	R100-0403-02T-XXX-G10-L14	C2	N/A	.018	9	7
PB45S50508M	R375-SP06-02T-XXX-R27-L14	75S	384S	.018	8	7
PB50S1010T17M	F200-1006-02-XXX-R27-L14	274K	281K	.018	10	7
PB50S1010T18M	R375-SP06-02T-XXX-R27-L14	75S	384S	.018	8	7
PB50S2020T17M	F200-1006-02-XXX-R27-L14	274K	281K	.018	10	7
PB50S2020T28L	R375-SP06-02T-XXX-R27-L14	75S	384S	.018	8	7
PB50S3030T17M	F200-1006-02-XXX-R27-L14	274K	281K	.018	10	7
PB50S3030T27L	F200-1006-02-XXX-R27-L14	274K	281K	.018	10	7
PB55S1010T2S81	R100-0403-02T-XXX-G10-L14	C2	N/A	.018	9	7
PB55S3030T2S8L	R375-SP06-02T-XXX-R27-L14	75S	384S	.018	8	7
PL450B	R050-0403-01N-XXX-R27-L14	437T	329T	.010	21	9
PL520	R080-0403-01N-XXX-R27-L14	274K	281K	.018	15	8
PLT5 488	R080-0403-01N-XXX-R27-L14	274K	281K	.018	15	8
PLT5 520_B4_5_6	R080-0403-01N-XXX-R27-L14	274K	281K	.018	15	8
PLT5_B1_2_3	R080-0403-01N-XXX-R27-L14	274K	281K	.018	15	8
QLF073A	R080-0403-01N-XXX-R27-L14	274K	281K	.018	15	8
QLF073D	R080-0403-01N-XXX-R27-L14	274K	281K	.018	15	8
R	R100-0403-02T-XXX-G10-L14	C2	N/A	.018	9	7
S	R100-0402-03T-XXX-R27-L14	75S	265S	.018	5	6
S PACKAGE	R050-0403-01N-XXX-R27-L14	437T	329T	.010	21	9
S4I	R100-0403-02T-XXX-G10-L14	C2	N/A	.018	9	7
S5	R100-SP02-02T-XXX-R27-L14	274K	281K	.018	6	6
S6	R100-0403-02T-XXX-G10-L14	C2	N/A	.018	9	7
S6L	R100-0403-02T-XXX-G10-L14	C2	N/A	.018	9	7
S8	R100-SP02-02T-XXX-R27-L14	274K	281K	.018	6	6
SAE-SERIES	F200-1006-02-XXX-R27-L14	274K	281K	.018	10	7
SAR 1500 E1 TO-8	R400-0803-02T-XXX-R27-L14	01S	93S	.018	23	9
SAR 1500 G1-TO-5	R200-0403-02T-XXX-R27-L14	01S	93S	.018	12	7
SAR 3000 E1 TO-8	R400-0803-02T-XXX-R27-L14	01S	93S	.018	23	9
SAR 3000 G1-TO-5	R200-0403-02T-XXX-R27-L14	01S	93S	.018	12	7
SAR S3 TO-46	R095-SP03-01T-XXX-R27-L14	274K	281K	.018	3	6
SAR T6 TO-37	F200-1006-02-XXX-R27-L14	274K	281K	.018	10	7
SAR/SARP-SERIES	R095-SP03-01T-XXX-R27-L14	274K	281K	.018	3	6
SARF-SERIES	F200-1006-02-XXX-R27-L14	274K	281K	.018	10	7
SARP T6 TO-37	F200-1006-02-XXX-R27-L14	274K	281K	.018	10	7
SARP-T8-TO-8	R375-SP06-02T-XXX-R27-L14	75S	384S	.018	8	7

See last page for other mounting types including low profile options.
Heat sink socket available to reduce heat and noise. Contact Andon for details.

LASER COMPONENTS GMBH						
LASER COMPONENTS GMBH Model Number	Andon Part Number Replace "XXX" with Terminal Type	Terminal Type		Pin Ø [in]	Figure Number	Page Number
		Thru-Hole	Surface Mount			
SAR-T8-TO-8	R375-SP06-02T-XXX-R27-L14	75S	384S	.018	8	7
SAT-SERIES	F200-1006-02-XXX-R27-L14	274K	281K	.018	10	7
SF	R100-SP02-02T-XXX-R27-L14	274K	281K	.018	6	6
SOT5.6	R080-0403-01N-XXX-R27-L14	274K	281K	.018	15	8
SOT9	R100-0403-04N-XXX-R27-L14	211S	265S	.018	20	9
SOT9	R100-0403-04N-XXX-R27-L14	211S	265S	.018	20	9
T & G PACKAGE	R079-0402-01T-XXX-R27-L14	274K	281K	.018	22	9
T6-2D-LD80-001	R080-0403-01N-XXX-R27-L14	274K	281K	.018	15	8
T7(IG19)	F200-1006-02-XXX-R27-L14	274K	281K	.018	10	7
TO-18	R080-0403-01N-XXX-R27-L14	274K	281K	.018	15	8
TO18 (5.6 MM) 3 PIN	R080-0403-01N-XXX-R27-L14	274K	281K	.018	15	8
TO-46	R100-0403-04N-XXX-R27-L14	211S	265S	.018	20	9
TO5 (9 MM) 3 PIN	R100-0403-04N-XXX-R27-L14	211S	265S	.018	20	9
TO8 MODULE	R375-SP06-02T-XXX-R27-L14	75S	384S	.018	8	7
TO-9	R100-0402-03T-XXX-R27-L14	75S	265S	.018	5	6
ULM760-01-TN-S46FTT	R100-SP05-01N-XXX-R27-L14	274K	281K	.018	19	9
ULM760-01-TN-S46FZP	R100-SP05-01N-XXX-R27-L14	274K	281K	.018	19	9
ULM760-03-TN-S46FTT	R100-0402-03T-XXX-R27-L14	75S	265S	.018	5	6
ULM760-03-TN-S46FZP	R100-0402-03T-XXX-R27-L14	75S	265S	.018	5	6
ULM763-01-TN-S46FTT	R100-SP05-01N-XXX-R27-L14	274K	281K	.018	19	9
ULM763-01-TN-S46FZP	R100-SP05-01N-XXX-R27-L14	274K	281K	.018	19	9
ULM763-03-TN-S46FTT	R100-0402-03T-XXX-R27-L14	75S	265S	.018	5	6
ULM763-03-TN-S46FZP	R100-0402-03T-XXX-R27-L14	75S	265S	.018	5	6
ULM850-A4-PL-S46FZP	R100-0402-03T-XXX-R27-L14	75S	265S	.018	5	6
ULM850-A4-PL-S46XZP	R100-0402-03T-XXX-R27-L14	75S	265S	.018	5	6
ULM850-B2-PL-S0101U	R100-0402-03T-XXX-R27-L14	75S	265S	.018	5	6
ULM850-B2-PL-S46FZP	R100-0402-03T-XXX-R27-L14	75S	265S	.018	5	6
ULM850-B2-PL-S46XZP	R100-0402-03T-XXX-R27-L14	75S	265S	.018	5	6
ULM852-01-TN-S46FTT	R100-SP05-01N-XXX-R27-L14	274K	281K	.018	19	9
ULM852-01-TN-S46FZP	R100-SP05-01N-XXX-R27-L14	274K	281K	.018	19	9
ULM852-10-TN-S46FTT	R100-0402-03T-XXX-R27-L14	75S	265S	.018	5	6
ULM852-10-TN-S46FZP	R100-0402-03T-XXX-R27-L14	75S	265S	.018	5	6
ULM948-01-TN-S46FTT	R100-SP05-01N-XXX-R27-L14	274K	281K	.018	19	9
ULM948-01-TN-S46FTT	R100-SP05-01N-XXX-R27-L14	274K	281K	.018	19	9
ULM948-01-TN-S46FZP	R100-SP05-01N-XXX-R27-L14	274K	281K	.018	19	9
ULM948-03-TN-S46FTT	R100-0402-03T-XXX-R27-L14	75S	265S	.018	5	6
ULM948-03-TN-S46FTT	R100-0402-03T-XXX-R27-L14	75S	265S	.018	5	6
ULM948-03-TN-S46FZP	R100-0402-03T-XXX-R27-L14	75S	265S	.018	5	6
WSLD-1064-050M-1-P	R100-0403-04N-XXX-R27-L14	211S	265S	.018	20	9
WSLD-1064-100M-2-PD	R100-0403-04N-XXX-R27-L14	211S	265S	.018	20	9

See last page for other mounting types including low profile options.
Heat sink socket available to reduce heat and noise. Contact Andon for details.

LASER COMPONENTS GMBH Continued

Top View Shown
Units: in [mm]

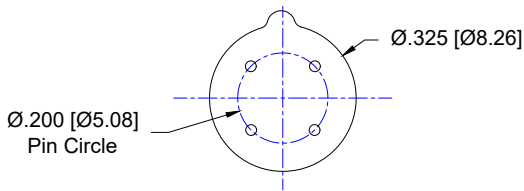


FIG. 1

Thru-Hole: R200-0404-01T-**437T**-R27-L14
Surface Mount: R200-0404-01T-**329T**-R27-L14

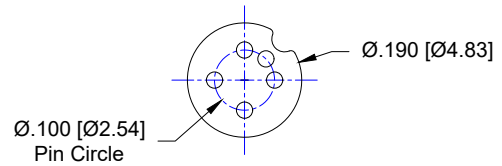


FIG. 2

Thru-Hole: R100-0805-01N-**C2**-G10-L14
Surface Mount: NOT AVAILABLE

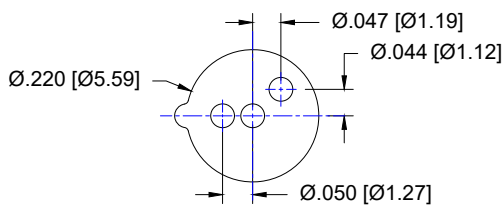


FIG. 3

Thru-Hole: R095-SP03-01T-**274K**-R27-L14
Surface Mount: R095-SP03-01T-**281K**-R27-L14

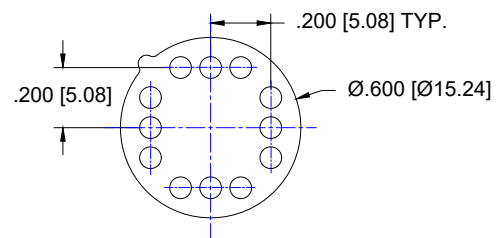


FIG. 4

Thru-Hole: R400-SP12-03T-**01S**-R27-L14
Surface Mount: R400-SP12-03T-**93S**-R27-L14

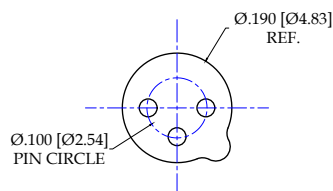


FIG. 5

Thru-Hole: R100-0403-05T-**75S**-R27-L14
Surface Mount: R100-0403-05T-**265S**-R27-L14

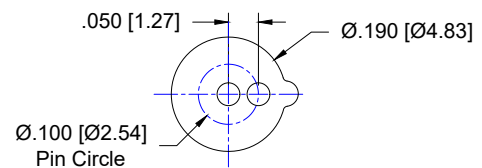


FIG. 6

Thru-Hole: R100-SP02-02T-**274K**-R27-L14
Surface Mount: R100-SP02-02T-**281K**-R27-L14

LASER COMPONENTS GMBH *Continued*

Top View Shown
Units: in [mm]

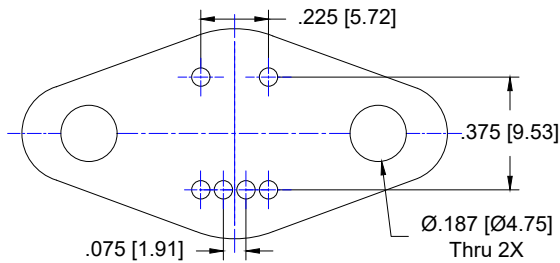


FIG. 7

Thru-Hole: F375-SP06-01-274K-R27-L14
Surface Mount: F375-SP06-01-281K-R27-L14

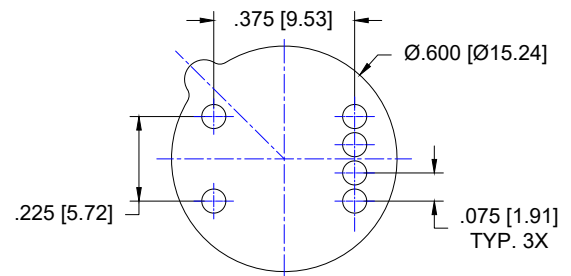


FIG. 8

Thru-Hole: R375-SP06-02T-75S-R27-L14
Surface Mount: R375-SP06-02T-384S-R27-L14

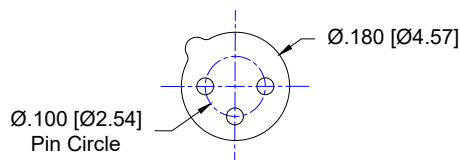


FIG. 9

Thru-Hole: R100-0403-02T-C2-G10-L14
Surface Mount: NOT AVAILABLE

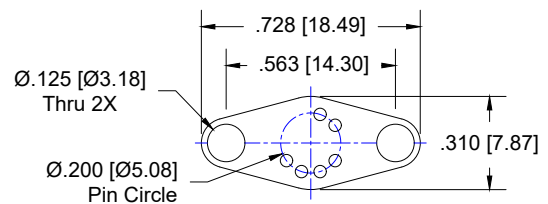


FIG. 10

Thru-Hole: F200-1006-02-274K-R27-L14
Surface Mount: F200-1006-02-281K-R27-L14

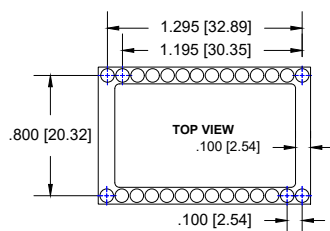


FIG. 11

Thru-Hole: C10-828-28-01-01S-R27-L14
Surface Mount: C10-828-28-01-93S-R27-L14

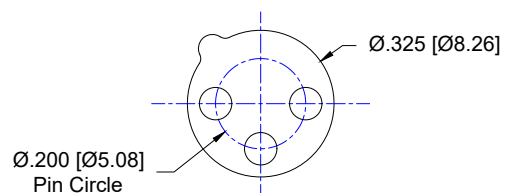


FIG. 12

Thru-Hole: R200-0403-02T-01S-R27-L14
Surface Mount: R200-0403-02T-93S-R27-L14

LASER COMPONENTS GMBH Continued

Top View Shown

Units: in [mm]

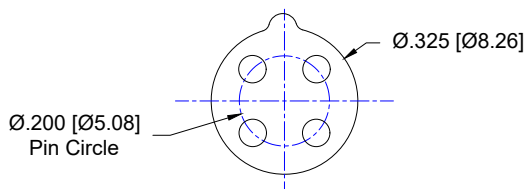


FIG. 13

Thru-Hole: R200-0404-01T-01S-R27-L14
Surface Mount: R200-0404-01T-93S-R27-L14

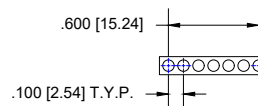


FIG. 14

SOLDER CUP: C10-007-07-01-556S-R27-L14

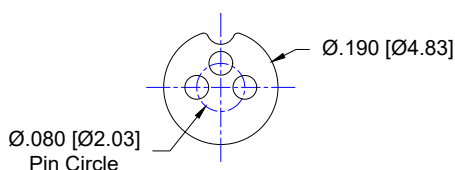


FIG. 15

Thru-Hole: R080-0403-01N-274K-R27-L14
Surface Mount: R080-0403-01N-281K-R27-L14

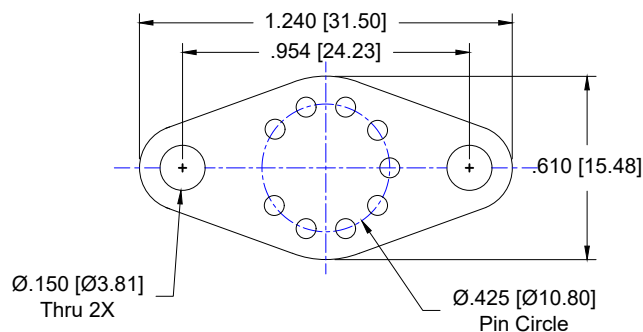


FIG. 16

Thru-Hole: F425-1009-01-295V-R27-L14
Surface Mount: F425-1009-01-439V-R27-L14

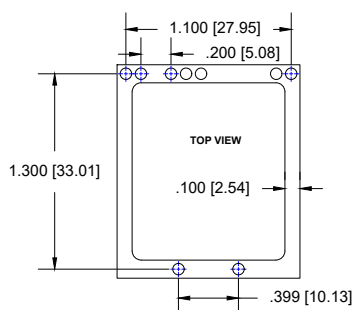


FIG. 17

Thru-Hole: C10-1324-09-01-295V-R27-L14
Surface Mount: C10-1324-09-01-439V-R27-L14

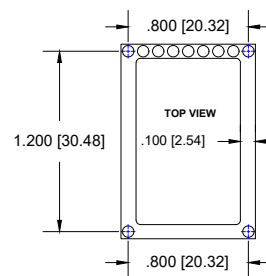


FIG. 18

Thru-Hole: C10-1218-11-01-295V-R27-L14
Surface Mount: C10-1218-11-01-439V-R27-L14

LASER COMPONENTS GMBH Continued

Top View Shown
Units: in [mm]

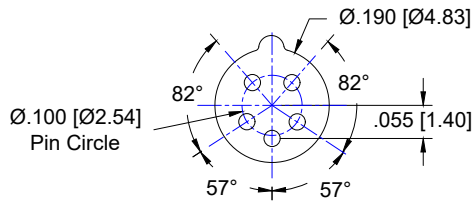


FIG. 19

Thru-Hole: R100-SP05-01N-**274K**-R27-L14
Surface Mount: R100-SP05-01N-**281K**-R27-L14

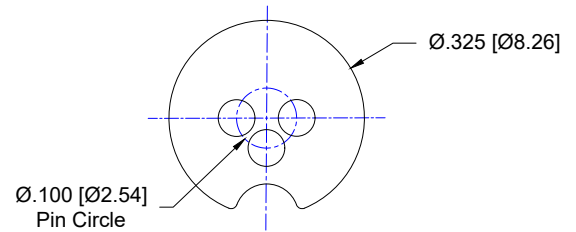


FIG. 20

Thru-Hole: R100-0403-04N-**211S**-R27-L14
Surface Mount: R100-0403-04N-**265S**-R27-L14

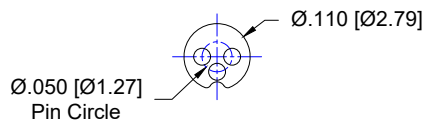


FIG. 21

Thru-Hole: R050-0403-01N-**437T**-R27-L14
Surface Mount: R050-0403-01N-**329T**-R27-L14

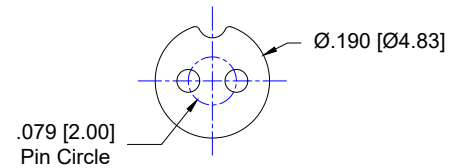


FIG. 22

Thru-Hole: R079-0402-01T-**274K**-R27-L14
Surface Mount: R079-0402-01T-**281K**-R27-L14

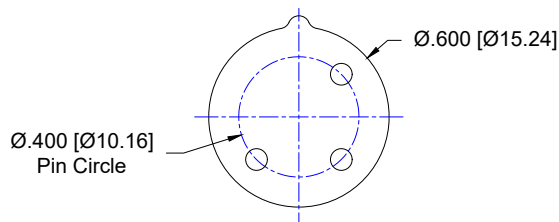


FIG. 23

Thru-Hole: R400-0803-02T-**01S**-R27-L14
Surface Mount: R400-0803-02T-**93S**-R27-L14

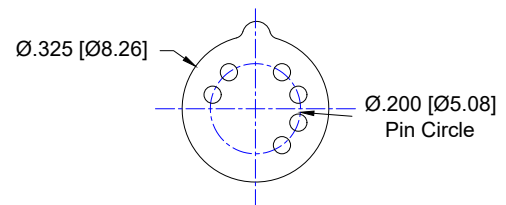


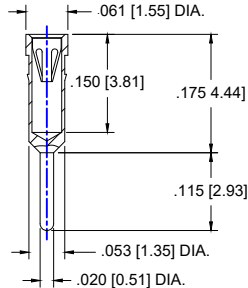
FIG. 24

Thru-Hole: R200-1006-01T-**274K**-R27-L14
Surface Mount: R200-1006-01T-**281K**-R27-L14

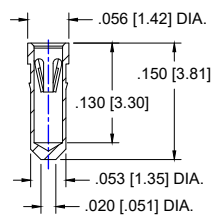
LASER COMPONENTS GMBH Continued

Socket Terminal Details Cross Section View Shown Units: in [mm]

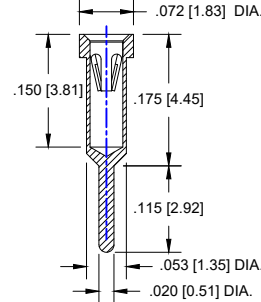
- 75S



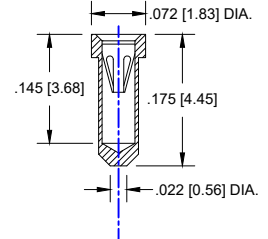
- 265S



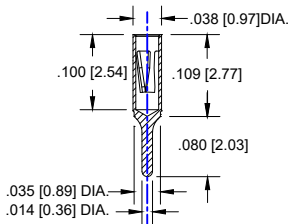
-01S



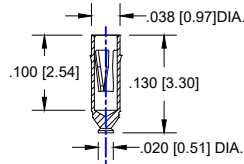
-93S



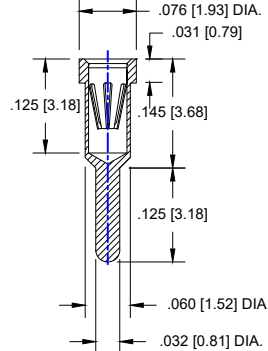
-274K



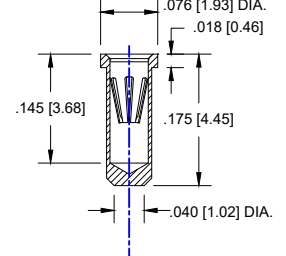
-281K



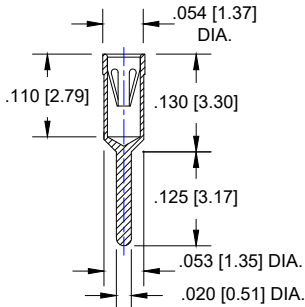
-295V



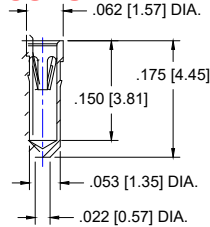
-439V



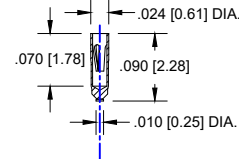
-211S



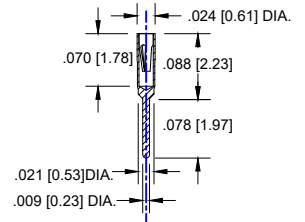
- 384S



-437T



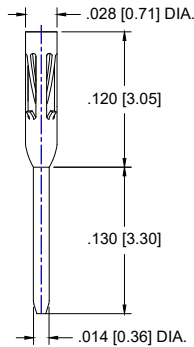
-329T



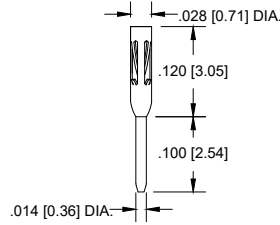
LASER COMPONENTS GMBH Continued

Socket Terminal Details Cross Section View Shown Units: in [mm]

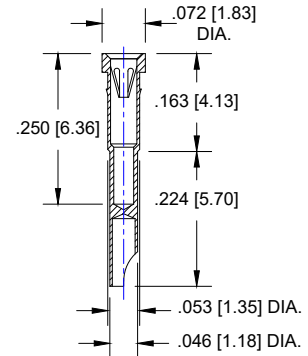
- C4



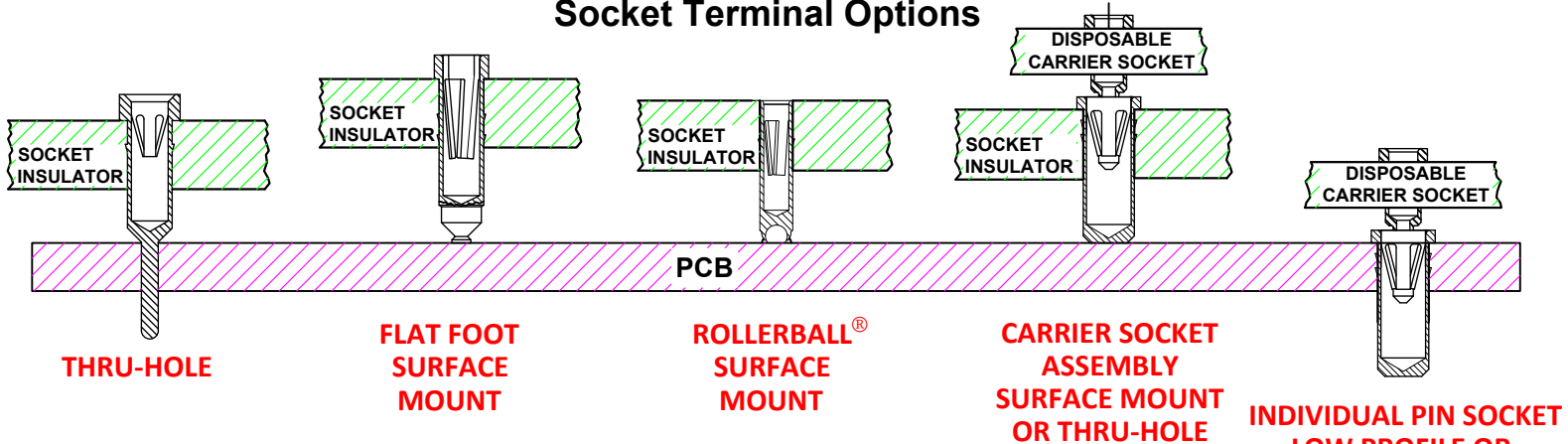
-C2



-556S



Socket Terminal Options



Technical Information

Material:

Insulator: Hi-Temp UL 94V-O
Terminal: Brass, per ASTM-B16
Contact: BeCu, Per ASTM-B194

Plating: RoHS COMPLIANT

R27 TERMINAL: GOLD / CONTACT: GOLD

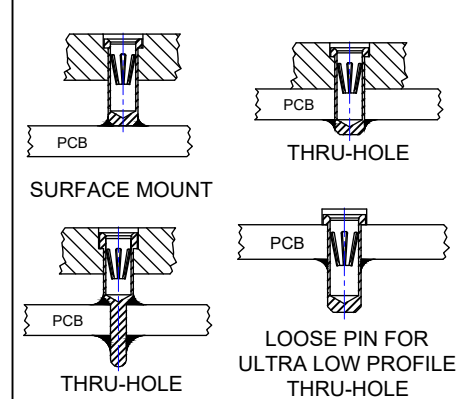
R17 TERMINAL: TIN / CONTACT: GOLD

OTHER PLATINGS AVAILABLE

Terminal Acceptance and Forces

Thru Hole Terminals				Surface Mount Terminals			
Thru Hole Terminal	Accepts Pin Diameter	Insertion Force	Withdrawal Force	Surface Mount Terminal	Accepts Pin Diameter	Insertion Force	Withdrawal Force
-01S	Ø.018 [Ø0.46]	9.0 oz Avg.	2.0 oz Min	-93S	Ø.018 [Ø0.46]	9.0 oz Avg.	2.0 oz Min
-211S	Ø.018 [Ø0.46]	9.0 oz Max	2.0 oz Min	-265S	Ø.018 [Ø0.46]	9.0 oz Max	2.0 oz Min
-75S	Ø.018 [Ø0.46]	9.0 oz Max	2.0 oz Min	-265S	Ø.018 [Ø0.46]	9.0 oz Max	2.0 oz Min
-437T	Ø.010 [Ø0.25]	1.0 oz Max	0.3 oz Min	-329T	Ø.010 [Ø0.25]	1.0 oz Max	0.3 oz Min
-274K	Ø.018 [Ø0.46]	1.0 oz Max	0.5 oz Min	-281K	Ø.018 [Ø0.46]	1.0 oz Max	0.5 oz Min
-295V	Ø.030 [Ø0.76]	13.2 oz Max	3.5 oz Min	-439V	Ø.030 [Ø0.76]	13.2 oz Max	3.5 oz Min
-556S	Ø.018 [Ø0.46]	9.0 oz Avg.	2.0 oz Min	-N/A	-	-	-
-C2	Ø.018 [Ø0.46]	1.5 oz Avg.	0.04 oz Min	-N/A	-	-	-
-C4	Ø.018 [Ø0.46]	1.5 oz Avg.	0.04 oz Min	-N/A	-	-	-
-75S	Ø.018 [Ø0.46]	9.0 oz Max	2.0 oz Min	-384S	Ø.018 [Ø0.46]	9.0 oz Max	2.0 oz Min

MOUNTING OPTIONS



©Copyright 2024 Andon Electronics Corporation. All Rights Reserved. This material is protected under US and other copyrights and may not be copied, sold, or redistributed in any form without written permission of Andon Electronics Corporation. Copyrights and trademarks are property of their respective companies. We reserve the right to change specifications without notice. Andon makes no warranty, expressed or implied, as to the suitability of the sockets for the intended purpose.

*Sockets are not drawn to scale LASER COMPONENTS GMBH 5/09/2024

ANDON ELECTRONICS CORPORATION
4 Court Drive, Lincoln RI 02865, United States of America

www.andonelectronics.com or www.andonelect.com
Phone 401-333-0388 Fax 401-333-0287
Email Info@andonelect.com

For fast, accurate placement of SIP sockets and ultra-low profile terminals

Phase 1:
Receive Carrier Assemblies designed to your pin layout.



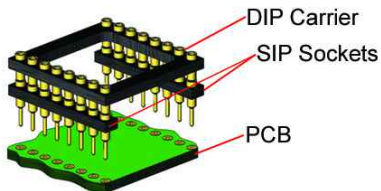
Phase 2:
Place carrier assemblies onto PCB; run through your soldering process.



Phase 3:
Remove carrier and plug in your device; discard carrier or send back to our factory for reloading.

DIP

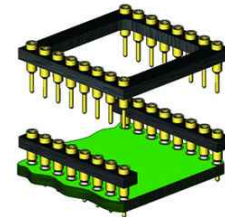
Before Soldering



During Soldering



After Soldering

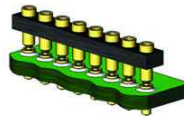


ULTRA-LOW PROFILE SIP

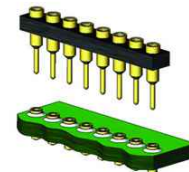
Before Soldering



During Soldering

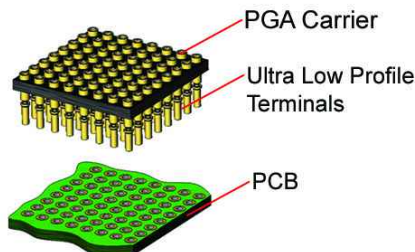


After Soldering



ULTRA-LOW PROFILE PGA

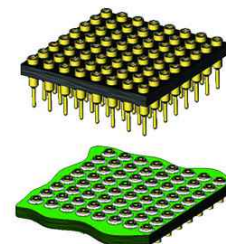
Before Soldering



During Soldering

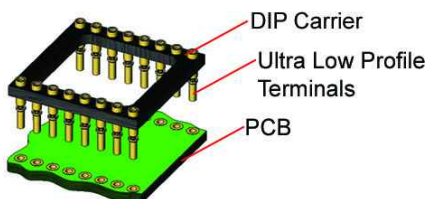


After Soldering

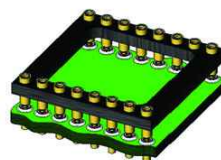


ULTRA LOW PROFILE DIP

Before Soldering



During Soldering



After Soldering

