

OPTOWAY						
OPTOWAY Model Number	Andon Part Number Replace "XXX" with Terminal Type	Terminal Type		Pin Ø [in]	Figure Number	Page Number
		Thru-Hole	Surface Mount			
PD-1190	R200-0404-01T-XXX-R27-L14	75S	265S	.018	1	2
PD-1170	R200-0404-01T-XXX-R27-L14	75S	265S	.018	1	2
APD-110	R100-0403-06T-XXX-R27-L14	75S	265S	.018	2	2
PD-8100	R100-0403-06T-XXX-R27-L14	75S	265S	.018	2	2
PD-8105	R100-0403-06T-XXX-R27-L14	75S	265S	.018	2	2
PD-1181	R100-0403-06T-XXX-R27-L14	75S	265S	.018	2	2
PD-1180	R100-0403-06T-XXX-R27-L14	75S	265S	.018	2	2
PD-3100	R100-0403-06T-XXX-R27-L14	75S	265S	.018	2	2
PD-3105	R100-0403-06T-XXX-R27-L14	75S	265S	.018	2	2
PD-5100	R100-0403-06T-XXX-R27-L14	75S	265S	.018	2	2
PD-5105	R100-0403-06T-XXX-R27-L14	75S	265S	.018	2	2
PD-1100	R100-0403-06T-XXX-R27-L14	75S	265S	.018	2	2
PD-1105	R100-0403-06T-XXX-R27-L14	75S	265S	.018	2	2
PD-1110	R100-0403-06T-XXX-R27-L14	75S	265S	.018	2	2
PD-1115	R100-0403-06T-XXX-R27-L14	75S	265S	.018	2	2
DL-5100-CXX0	R080-0404-01N-XXX-R27-L14	274K	281K	.018	3	2
DL-5120-CXX0	R080-0404-01N-XXX-R27-L14	274K	281K	.018	3	2
DL-5140-CXX0	R080-0404-01N-XXX-R27-L14	274K	281K	.018	3	2
DL-5100S-CXX0	R080-0404-01N-XXX-R27-L14	274K	281K	.018	3	2
DL-5120S-CXX0	R080-0404-01N-XXX-R27-L14	274K	281K	.018	3	2
DL-5140S-CXX0	R080-0404-01N-XXX-R27-L14	274K	281K	.018	3	2
DL-5100-1650	R080-0404-01N-XXX-R27-L14	274K	281K	.018	3	2
DL-5120-1650	R080-0404-01N-XXX-R27-L14	274K	281K	.018	3	2
DL-5100S-1650	R080-0404-01N-XXX-R27-L14	274K	281K	.018	3	2
DL-5120S-1650	R080-0404-01N-XXX-R27-L14	274K	281K	.018	3	2
DL-5100-1625	R080-0404-01N-XXX-R27-L14	274K	281K	.018	3	2
DL-5120-1625	R080-0404-01N-XXX-R27-L14	274K	281K	.018	3	2
DL-5100S-1625	R080-0404-01N-XXX-R27-L14	274K	281K	.018	3	2
DL-5120S-1625	R080-0404-01N-XXX-R27-L14	274K	281K	.018	3	2
DL-5100	R080-0404-01N-XXX-R27-L14	274K	281K	.018	3	2
DL-5120	R080-0404-01N-XXX-R27-L14	274K	281K	.018	3	2
DL-5140	R080-0404-01N-XXX-R27-L14	274K	281K	.018	3	2
DL-5100S	R080-0404-01N-XXX-R27-L14	274K	281K	.018	3	2
DL-5120S	R080-0404-01N-XXX-R27-L14	274K	281K	.018	3	2
DL-5140S	R080-0404-01N-XXX-R27-L14	274K	281K	.018	3	2
DL-3100	R080-0404-01N-XXX-R27-L14	274K	281K	.018	3	2
DL-3120	R080-0404-01N-XXX-R27-L14	274K	281K	.018	3	2
DL-3140	R080-0404-01N-XXX-R27-L14	274K	281K	.018	3	2
DL-3100S	R080-0404-01N-XXX-R27-L14	274K	281K	.018	3	2
DL-3120S	R080-0404-01N-XXX-R27-L14	274K	281K	.018	3	2
DL-3140S	R080-0404-01N-XXX-R27-L14	274K	281K	.018	3	2

OPTOWAY Continued

Socket Terminal Details

Cross Section View Shown Units: in [mm]

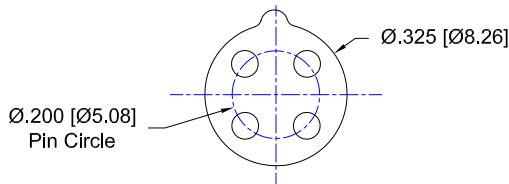


FIG: 1

Thru-Hole: R200-0404-01T-75S-R27-L14

Surface Mount: R200-0404-01T-265S-R27-L14

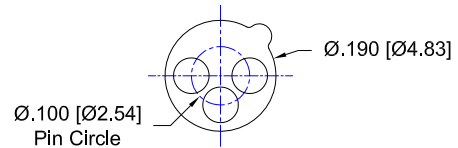


FIG: 2

Thru-Hole: R100-0403-06T-75S-R27-L14

Surface Mount: R100-0403-06T-265S-R27-L14

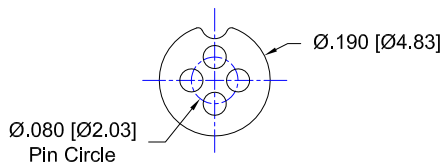


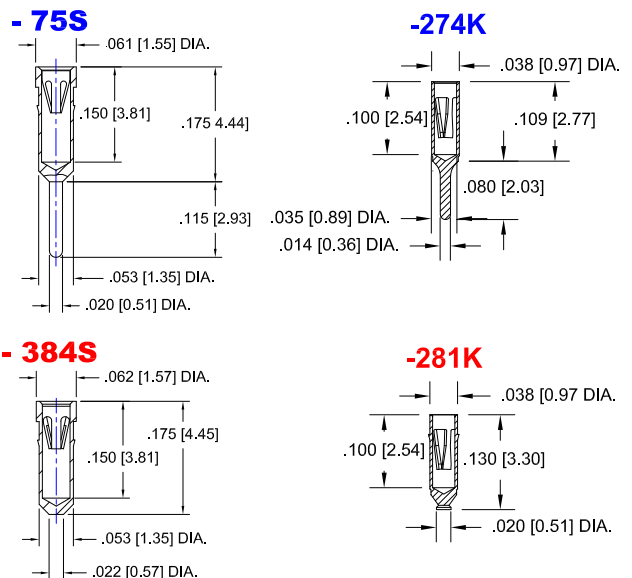
FIG: 3

Thru-Hole: R080-0404-01N-274K-R27-L14

Surface Mount: R080-0404-01N-281K-R27-L14

Socket Terminal Details

Cross Section View Shown Units: in [mm]



Material:

Insulator: Hi-Temp UL 94V-0
Terminal: Brass, per ASTM-B16
Contact: BeCu, Per ASTM-B194

Plating: RoHS COMPLIANT

R15 TERMINAL: GOLD / CONTACT: GOLD

R17 TERMINAL: TIN / CONTACT: GOLD

OTHER PLATINGS AVAILABLE

Terminal Acceptance and Forces							
Thru Hole Terminals				Surface Mount Terminals			
Thru Hole Terminal	Accepts Pin Diameter	Insertion Force	Withdrawal Force	Surface Mount Terminal	Accepts Pin Diameter	Insertion Force	Withdrawal Force
-274K	Ø.018 [Ø0.46]	1.0 oz Avg.	0.5 oz Min	-281K	Ø.018 [Ø0.46]	1.0 oz Avg.	0.5 oz Min
-75S	Ø.018 [Ø0.46]	9.0 oz Avg.	2.0 oz Min	-265S	Ø.018 [Ø0.46]	9.0 oz Avg.	2.0 oz Min

MOUNTING OPTIONS

