

OSI LASER DIODE, INC.						
OSI LASER DIODE, INC. Model Number	Andon Part Number Replace "XXX" with Terminal Type	Terminal Type		Pin Ø [in]	Figure Number	Page Number
		Thru-Hole	Surface Mount			
9 MM PACKAGE	R100-0403-02T-XXX-R27-L14	75S	265S	.018	4	1
TO18T PACKAGE	R100-0402-06T-XXX-R27-L14	211S	384S	.018	3	1
5.6 PACKAGE	R080-0403-01N-XXX-R27-L14	274K	281K	.018	6	1
TO5 PACKAGE	R200-SP02-03-XXX-R27-L14	433E	285E	.040	5	1
NO FLANGE (NF) PACKAGE	C10-314-14-01-XXX-R27-L14	01S	93S	.018	2	1
STANDARD LONG HORN (LH)	C10-314-14-01-XXX-R27-L14	01S	93S	.018	2	1
RT2000PT-052FCL	C10-420-20-01-XXX-R27-L14	01S	93S	.018	1	1
RT2000PT-155FCL	C10-420-20-01-XXX-R27-L14	01S	93S	.018	1	1
RT2000PT-622FCL	C10-420-20-01-XXX-R27-L14	01S	93S	.018	1	1
TL2063PT-010FCL	C10-420-20-01-XXX-R27-L14	01S	93S	.018	1	1
TL2063PT-005FCL	C10-420-20-01-XXX-R27-L14	01S	93S	.018	1	1
TL2065PT-010FCL	C10-420-20-01-XXX-R27-L14	01S	93S	.018	1	1
TL2065PT-005FCL	C10-420-20-01-XXX-R27-L14	01S	93S	.018	1	1

Heat sink socket available to reduce heat and noise. Contact Andon for details.

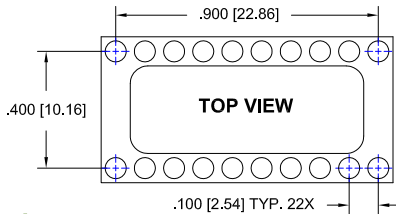


FIG.1

Thru-Hole: C10-420-20-01-01S-R27-L14

Surface Mount: C10-420-20-01-93S-R27-L14

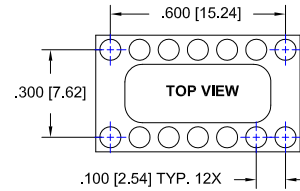


FIG.2

Thru-Hole: C10-314-14-01-01S-R27-L14

Surface Mount: C10-314-14-01-93S-R27-L14

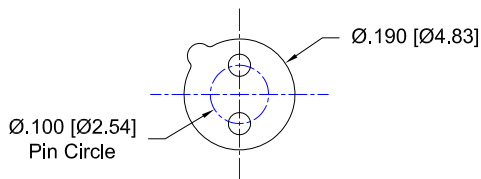


FIG.3

Thru-Hole: R100-0402-06T-211S-R27-L14

Surface Mount: R100-0402-06T-384S-R27-L14

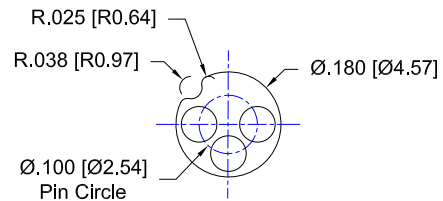


FIG.4

Thru-Hole: R100-0403-02T-75S-R27-L14

Surface Mount: R100-0403-02T-265S-R27-L14

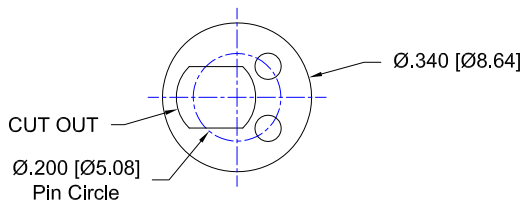


FIG.5

Thru-Hole: R200-SP02-03-433E-R27-L14

Surface Mount: R200-SP02-03-285E-R27-L14

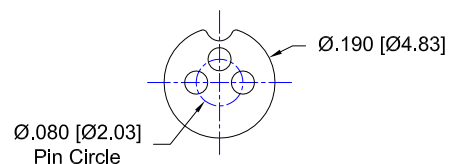
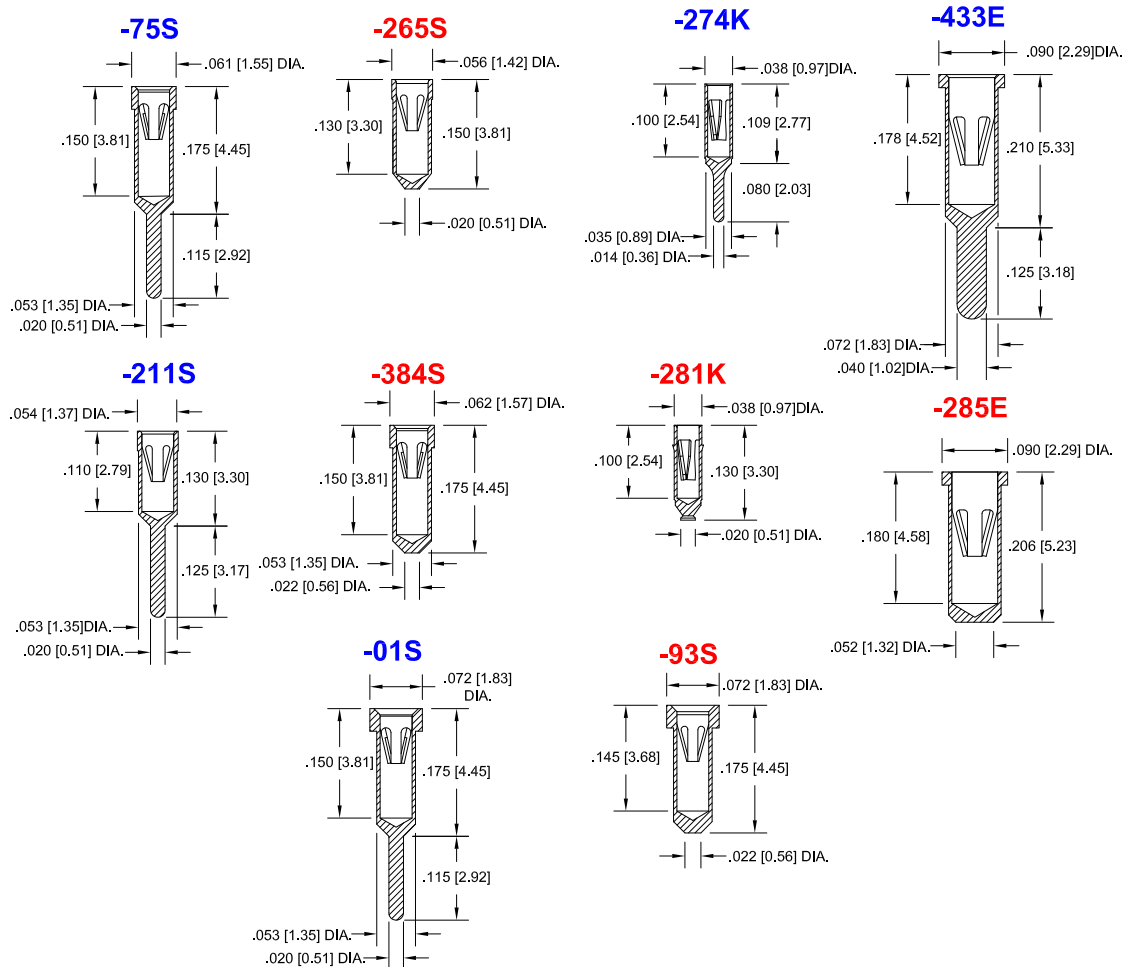


FIG.6

Thru-Hole: R080-0403-01N-274K-R27-L14

Surface Mount: R080-0403-01N-281K-R27-L14

OSI LASER DIODE, INC. *Continued*  
**Socket Terminal Details**  
Cross Section View Shown Units: in [mm]



### Technical Information

**Material:**

Insulator: Hi-Temp UL 94V-O  
Terminal: Brass, per ASTM-B16  
Contact: BeCu, Per ASTM-B194

**Plating: RoHS COMPLIANT**

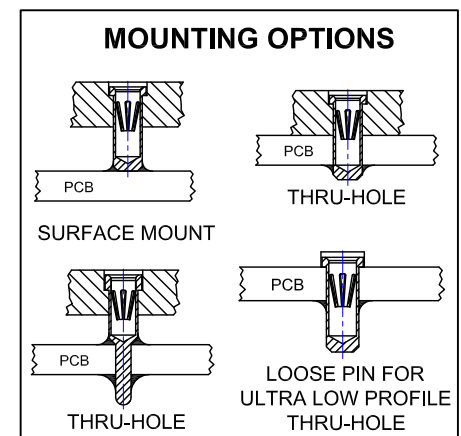
**R15 TERMINAL: GOLD / CONTACT: GOLD**

**R17 TERMINAL: TIN / CONTACT: GOLD**

**OTHER PLATINGS AVAILABLE**

**Terminal Acceptance and Forces**

Thru Hole Terminals				Surface Mount Terminals			
Thru Hole Terminal	Accepts Pin Diameter	Insertion Force	Withdrawal Force	Surface Mount Terminal	Accepts Pin Diameter	Insertion Force	Withdrawal Force
-433E	Ø.040 [Ø1.02]	36.0 oz Avg.	3.9 oz Min	-285E	Ø.040 [Ø1.02]	36.0 oz Avg.	3.9 oz Min
-01S	Ø.018 [Ø0.46]	9.0 oz Avg.	2.0 oz Min	-93S	Ø.018 [Ø0.46]	9.0 oz Avg.	2.0 oz Min
-274K	Ø.018 [Ø0.46]	1.0 oz Avg.	0.5 oz Min	-281K	Ø.018 [Ø0.46]	1.0 oz Avg.	0.5 oz Min
-211S	Ø.018 [Ø0.46]	9.0 oz Avg.	2.0 oz Min	-384S	Ø.018 [Ø0.46]	9.0 oz Avg.	2.0 oz Min
-75S	Ø.018 [Ø0.46]	9.0 oz Avg.	2.0 oz Min	-265S	Ø.018 [Ø0.46]	9.0 oz Avg.	2.0 oz Min



©Copyright 2015 Andon Electronics Corporation. All Rights Reserved. This material is protected under US and other copyrights and may not be copied, sold, or redistributed in any form without written permission of Andon Electronics Corporation. Copyrights and trademarks are property of their respective companies. We reserve the right to change specifications without notice. Andon makes no warranty, expressed or implied, as to the suitability of the sockets for the intended purpose.

**"ANDON PROPRIETARY INFORMATION"**  
**RoHS Compliant**

\*Sockets are not drawn to scale OSI LASER DIODE, INC. 6/30/2015