

QD Laser, Inc.						
QD Laser, Inc. Model Number	Andon Part Number Replace "XXX" with Terminal Type	Terminal Type		Pin Ø [in]	Figure Number	Page Number
		Thru-Hole	Surface Mount			
QLD1061-5330	(2) C10-007-07-XXX-R27-L14	01S	93S	.018	3	1
QLD1061-5330	(2) C10-007-07-XXX-R27-L14	01S	93S	.018	3	1
QLFA063A	R200-0403-11T-XXX-R27-L14	01S	93S	.018	1	1
QLF063D	R200-0403-11T-XXX-R27-L14	01S	93S	.018	1	1
QLF1335-AD	R200-0404-02T-XXX-R27-L14	01S	93S	.018	2	1
QLF1339-AA	R200-0404-02T-XXX-R27-L14	01S	93S	.018	2	1

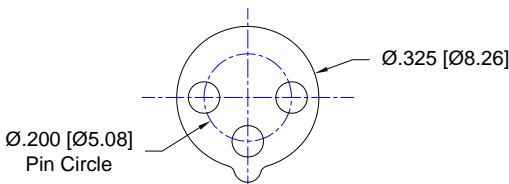


Fig. 1

Thru-Hole: R200-0403-11T-01S-R27-L14
Surface Mount: R200-0403-11T-93S-R27-L14

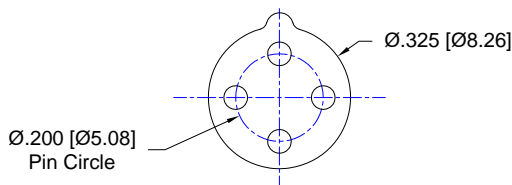
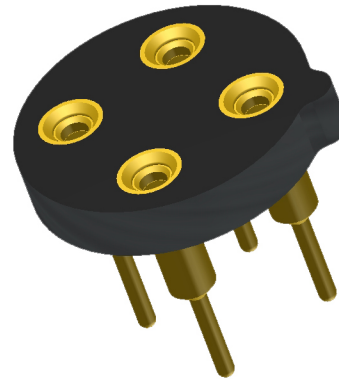


Fig. 2

Thru-Hole: R200-0404-02T-01S-R27-L14
Surface Mount: R200-0404-02T-93S-R27-L14

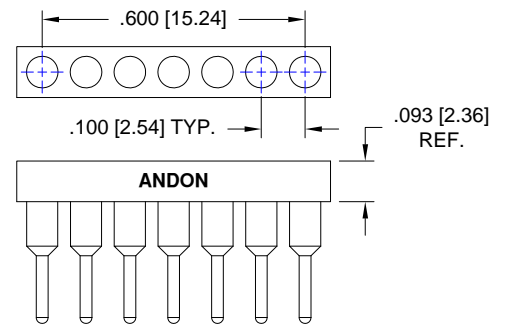
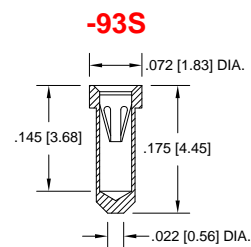
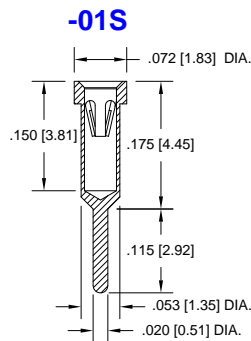


Fig. 3

2 SIPS REQUIRED
Thru-Hole: (2) C10-007-07-01-01S-R27-L14
Surface Mount: (2) C10-007-07-01-93S-R27-L14

QD Laser, Inc. Continued

Socket Terminal Details Cross Section View Shown Units: in [mm]



Technical Information

Material:

Insulator: Hi-Temp UL 94V-0
Terminal: Brass, per ASTM-B16
Contact: BeCu, Per ASTM-B194

Plating: RoHS COMPLIANT

R15 TERMINAL: GOLD / CONTACT: GOLD

R17 TERMINAL: TIN / CONTACT: GOLD

OTHER PLATINGS AVAILABLE

Terminal Acceptance and Forces

Thru Hole Terminals				Surface Mount Terminals			
Thru Hole Terminal	Accepts Pin Diameter	Insertion Force	Withdrawal Force	Surface Mount Terminal	Accepts Pin Diameter	Insertion Force	Withdrawal Force
-01S	Ø.018 [Ø0.46]	9.0 oz Avg.	2.0 oz Min	-93S	Ø.018 [Ø0.46]	9.0 oz Avg.	2.0 oz Min

MOUNTING OPTIONS

