

SPECTRUM DETECTOR, INC.						
SPECTRUM DETECTOR, INC. Model Number	Andon Part Number Replace "XXX" with Terminal Type	Terminal Type		Pin Ø [in]	Figure Number	Page Number
		Thru-Hole	Surface Mount			
SPC-XXH	R230-0808-01T-XXX-R27-L14	75S	265S	.018	1	1
SPH-10 SERIES	R230-0808-01T-XXX-R27-L14	75S	265S	.018	1	1
SPH-30 SERIES	R230-0808-01T-XXX-R27-L14	75S	265S	.018	1	1
SPH-40 SERIES	R230-0808-01T-XXX-R27-L14	75S	265S	.018	1	1
SPC-9/9H	R400-SP08-01T-XXX-R27-L14	01S	93S	.018	2	1

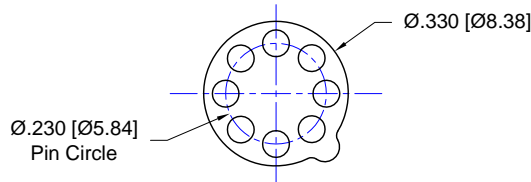


FIG: 1

Thru-Hole: R230-0808-01T-75S-R27-L14
Surface Mount: R230-0808-01T-265S-R27-L14

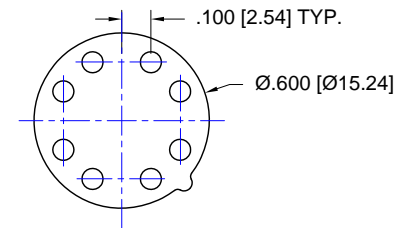
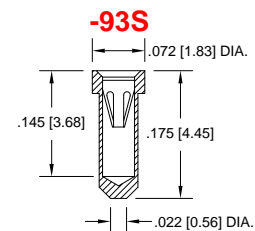
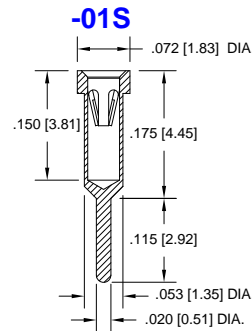
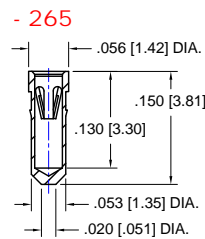
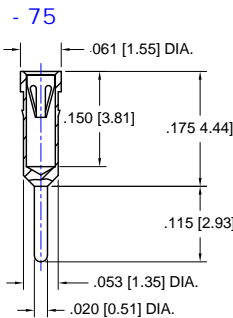


FIG: 2

Thru-Hole: R400-SP08-01T-01S-R27-L14
Surface Mount: R400-SP08-01T-93S-R27-L14



Technical Information

Material:

Insulator: Hi-Temp UL 94V-O
Terminal: Brass, per ASTM-B16
Contact: BeCu, Per ASTM-B194

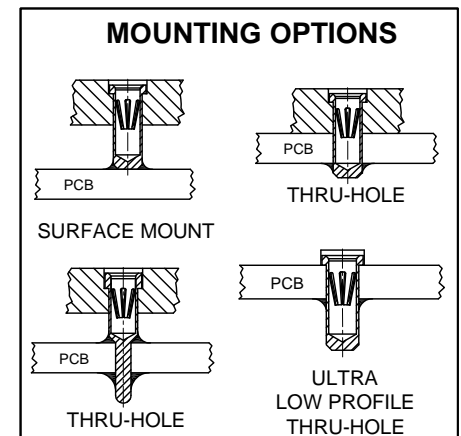
Plating: RoHS COMPLIANT

R15 TERMINAL: GOLD / CONTACT: GOLD

R17 TERMINAL: TIN / CONTACT: GOLD

OTHER PLATINGS AVAILABLE

Terminal Acceptance and Forces							
Thru Hole Terminals				Surface Mount Terminals			
Thru Hole Terminal	Accepts Pin Diameter	Insertion Force	Withdrawal Force	Surface Mount Terminal	Accepts Pin Diameter	Insertion Force	Withdrawal Force
-75S	Ø.018 [Ø0.46]	9.0 oz Avg.	2.0 oz Min	-265S	Ø.018 [Ø0.46]	9.0 oz Avg.	2.0 oz Min
-01S	Ø.018 [Ø0.46]	9.0 oz Avg.	2.0 oz Min	-93S	Ø.018 [Ø0.46]	9.0 oz Avg.	2.0 oz Min



"ANDON PROPRIETARY INFORMATION"

RoHS Compliant