

TYCO ELECTRONICS / LDI SENSOR SOCKETS						
Tyco Electronics / LDI Sensor Sockets Model Number	Andon Part Number Replace "XXX" with Terminal Type	Terminal Type		Pin Ø [in]	Figure Number	Page Number
		Thru-Hole	Surface Mount			
CVD163-9mm	R100-0403-05N-XXX-R15-L14	75S	265S	.018	1	2
CVD163-TO-18T	R100-0402-02T-XXX-R15-L14	75S	265S	.018	2	2
CVD163-TO-5T	R200-SP02-03-XXX-R15-L14	75S	265S	.018	3	2
CVD165-9mm	R100-0403-05N-XXX-R15-L14	75S	265S	.018	1	2
CVD165-TO-18T	R100-0402-02T-XXX-R15-L14	75S	265S	.018	2	2
CVD165-TO-5T	R200-SP02-03-XXX-R15-L14	75S	265S	.018	3	2
CVD166-9mm	R100-0403-05N-XXX-R15-L14	75S	265S	.018	1	2
CVD166-TO-18T	R100-0402-02T-XXX-R15-L14	75S	265S	.018	2	2
CVD166-TO-5T	R200-SP02-03-XXX-R15-L14	75S	265S	.018	3	2
CVD167-9mm	R100-0403-05N-XXX-R15-L14	75S	265S	.018	1	2
CVD167-TO-18T	R100-0402-02T-XXX-R15-L14	75S	265S	.018	2	2
CVD167-TO-5T	R200-SP02-03-XXX-R15-L14	75S	265S	.018	3	2
CVD192-TO-18T	R100-0402-02T-XXX-R15-L14	75S	265S	.018	2	2
CVD192-TO-5T	R200-SP02-03-XXX-R15-L14	75S	265S	.018	3	2
CVD193-9mm	R100-0403-05N-XXX-R15-L14	75S	265S	.018	1	2
CVD193-TO-18T	R100-0402-02T-XXX-R15-L14	75S	265S	.018	2	2
CVD193-TO-5T	R200-SP02-03-XXX-R15-L14	75S	265S	.018	3	2
CVD195-9mm	R100-0403-05N-XXX-R15-L14	75S	265S	.018	1	2
CVD195-TO-18T	R100-0402-02T-XXX-R15-L14	75S	265S	.018	2	2
CVD195-TO-5T	R200-SP02-03-XXX-R15-L14	75S	265S	.018	3	2
CVD197-9mm	R100-0403-05N-XXX-R15-L14	75S	265S	.018	1	2
CVD197-TO-18T	R100-0402-02T-XXX-R15-L14	75S	265S	.018	2	2
CVD197-TO-5T	R200-SP02-03-XXX-R15-L14	75S	265S	.018	3	2
CVD40-9mm	R100-0403-05N-XXX-R15-L14	75S	265S	.018	1	2
CVD40-TO-18T	R100-0402-02T-XXX-R15-L14	75S	265S	.018	2	2
CVD40-TO-5T	R200-SP02-03-XXX-R15-L14	75S	265S	.018	3	2
CVD60-9mm	R100-0403-05N-XXX-R15-L14	75S	265S	.018	1	2
CVD60-TO-18T	R100-0402-02T-XXX-R15-L14	75S	265S	.018	2	2
CVD60-TO-5T	R200-SP02-03-XXX-R15-L14	75S	265S	.018	3	2
CVD62-9mm	R100-0403-05N-XXX-R15-L14	75S	265S	.018	1	2
CVD62-TO-18T	R100-0402-02T-XXX-R15-L14	75S	265S	.018	2	2
CVD62-TO-5T	R200-SP02-03-XXX-R15-L14	75S	265S	.018	3	2
CVD65-9mm	R100-0403-05N-XXX-R15-L14	75S	265S	.018	1	2
CVD65-TO-18T	R100-0402-02T-XXX-R15-L14	75S	265S	.018	2	2
CVD65-TO-5T	R200-SP02-03-XXX-R15-L14	75S	265S	.018	3	2
CVD67-TO-18T	R100-0402-02T-XXX-R15-L14	75S	265S	.018	2	2
CVD67-TO-5T	R200-SP02-03-XXX-R15-L14	75S	265S	.018	3	2
CVD68-9mm	R100-0403-05N-XXX-R15-L14	75S	265S	.018	1	2
CVD68-TO-18T	R100-0402-02T-XXX-R15-L14	75S	265S	.018	2	2
CVD68-TO-5T	R200-SP02-03-XXX-R15-L14	75S	265S	.018	3	2
CVD90-9mm	R100-0403-05N-XXX-R15-L14	75S	265S	.018	1	2
CVD90-TO-18T	R100-0402-02T-XXX-R15-L14	75S	265S	.018	2	2
CVD90-TO-5T	R200-SP02-03-XXX-R15-L14	75S	265S	.018	3	2
CVD93-9mm	R100-0403-05N-XXX-R15-L14	75S	265S	.018	1	2
CVD93-TO-18T	R100-0402-02T-XXX-R15-L14	75S	265S	.018	2	2
CVD93-TO-5T	R200-SP02-03-XXX-R15-L14	75S	265S	.018	3	2
CVD95-9mm	R100-0403-05N-XXX-R15-L14	75S	265S	.018	1	2
CVD95-TO-18T	R100-0402-02T-XXX-R15-L14	75S	265S	.018	2	2
CVD95-TO-5T	R200-SP02-03-XXX-R15-L14	75S	265S	.018	3	2
CVD97-9mm	R100-0403-05N-XXX-R15-L14	75S	265S	.018	1	2
CVD97-TO-18T	R100-0402-02T-XXX-R15-L14	75S	265S	.018	2	2
CVD97-TO-5T	R200-SP02-03-XXX-R15-L14	75S	265S	.018	3	2
CVL2S57-9mm	R100-0403-05N-XXX-R15-L14	75S	265S	.018	1	2
CVL2S57-TO-18T	R100-0402-02T-XXX-R15-L14	75S	265S	.018	2	2
CVL2S57-TO-5T	R200-SP02-03-XXX-R15-L14	75S	265S	.018	3	2

TYCO ELECTRONICS / LDI SENSOR SOCKETS <i>continued</i>						
Tyco Electronics/LDI Sensor Sockets Model Number	Andon Part Number Replace "XXX" with Terminal Type	Terminal Type		Pin Ø [in]	Figure Number	Page Number
		Thru-Hole	Surface Mount			
CVL3S57-9mm	R100-0403-05N-XXX-R15-L14	75S	265S	.018	1	2
CVL3S57-TO-18T	R100-0402-02T-XXX-R15-L14	75S	265S	.018	2	2
CVL3S57-TO-5T	R200-SP02-03-XXX-R15-L14	75S	265S	.018	3	2
CVL4S57-9mm	R100-0403-05N-XXX-R15-L14	75S	265S	.018	1	2
CVL4S57-TO-18T	R100-0402-02T-XXX-R15-L14	75S	265S	.018	2	2
CVL4S57-TO-5T	R200-SP02-03-XXX-R15-L14	75S	265S	.018	3	2
CVL57-9mm	R100-0403-05N-XXX-R15-L14	75S	265S	.018	1	2
CVL57-TO-18T	R100-0402-02T-XXX-R15-L14	75S	265S	.018	2	2
CVL57-TO-5T	R200-SP02-03-XXX-R15-L14	75S	265S	.018	3	2
CWR-635	F500-SP09-01-XXX-R15-L14	433E	285E	.040	4	2
CWR-650	F500-SP09-01-XXX-R15-L14	433E	285E	.040	4	2
CWXXX-90-XX	R100-0403-05N-XXX-R15-L14	75S	265S	.018	1	2
CWXXX-T3-XX	R100-0403-05N-XXX-R15-L14	75S	265S	.018	1	2
LDFC SERIES	R100-0404-01T-XXX-R15-L14	75S	265S	.018	5	2
LPD3080-PM1	R100-SP03-01T-XXX-R15-L14	274K	281K	.018	6	2
LPD3080-PM2	R100-SP03-01T-XXX-R15-L14	274K	281K	.018	6	2
LPD3080-PM3	R100-SP03-01T-XXX-R15-L14	274K	281K	.018	6	2
LPD3080-PM4	R100-SP03-01T-XXX-R15-L14	274K	281K	.018	6	2

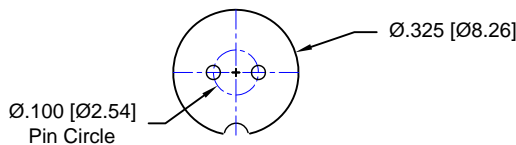


Fig. 1

Thru-Hole: R100-0403-05N-**75S**-R15-L14
Surface Mount: R100-0403-05N-**265S**-R15-L14

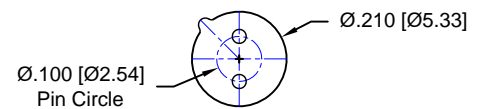


Fig. 2

Thru-Hole: R100-0402-02T-**75S**-R15-L14
Surface Mount: R100-0402-02T-**265S**-R15-L14

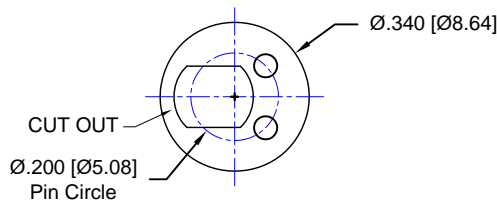


Fig. 3

Thru-Hole: R200-SP02-03-**75S**-R15-L14
Surface Mount: R200-SP02-03-**265S**-R15-L14

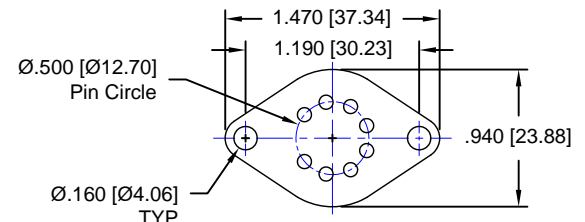


Fig. 4

Thru-Hole: F500-SP09-01-**433E**-R15-L14
Surface Mount: F500-SP09-01-**285E**-R15-L14

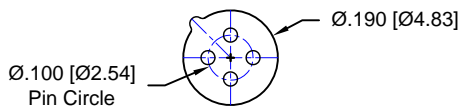


Fig. 5

Thru-Hole: R100-0404-01T-**75S**-R15-L14
Surface Mount: R100-0404-01T-**265S**-R15-L14

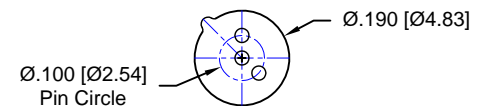
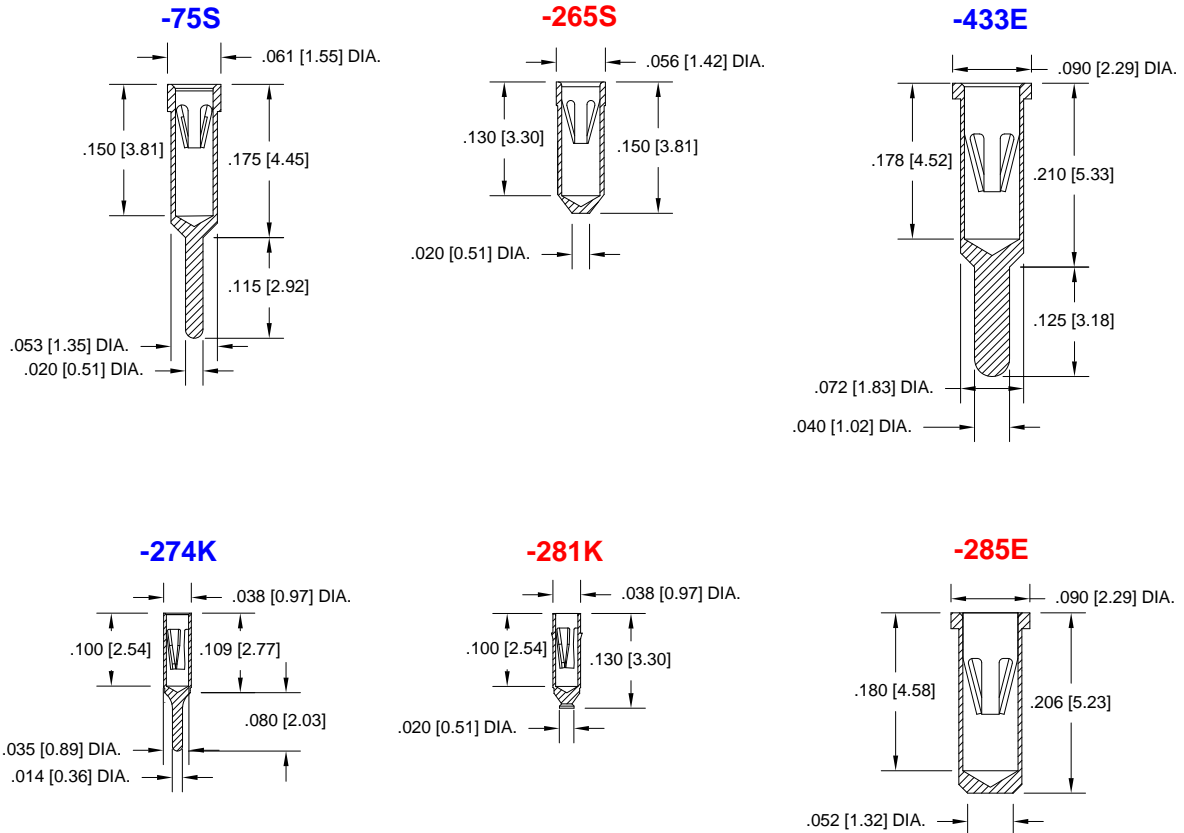


Fig. 6

Thru-Hole: R100-SP03-01T-**274K**-R15-L14
Surface Mount: R100-SP03-01T-**281K**-R15-L14

TYCO ELECTRONICS / LDI SENSOR SOCKETS *Continued*

Socket Terminal Details Cross Section View Shown Units: in [mm]



Technical Information

Material:

Insulator: Hi-Temp UL 94V-0
 Terminal: Brass, per ASTM-B16
 Contact: BeCu, Per ASTM-B194

Plating: RoHS COMPLIANT

R15 TERMINAL: GOLD / CONTACT: GOLD

R17 TERMINAL: TIN / CONTACT: GOLD

OTHER PLATINGS AVAILABLE

Terminal Acceptance and Forces

Thru Hole Terminals				Surface Mount Terminals			
Thru Hole Terminal	Accepts Pin Diameter	Insertion Force	Withdrawal Force	Surface Mount Terminal	Accepts Pin Diameter	Insertion Force	Withdrawal Force
-75S	Ø.018 [Ø0.46]	9.0 oz Avg.	2.0 oz Min	-265S	Ø.018 [Ø0.46]	9.0 oz Avg.	2.0 oz Min
-433E	Ø.040 [Ø1.02]	36.0 oz Max	3.9 oz Min	-285E	Ø.040 [Ø1.02]	36.0 oz Max	3.9 oz Min
-274K	Ø.018 [Ø0.46]	1.0 oz Max	0.5 oz Min	-281K	Ø.018 [Ø0.46]	1.0 oz Max	0.5 oz Min

MOUNTING OPTIONS

