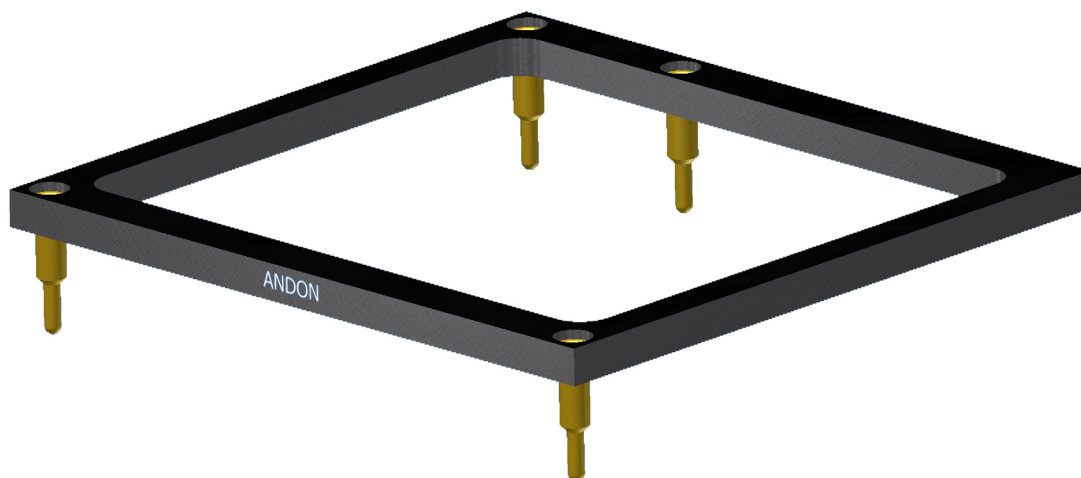




RoHS Compliant
ISO 9001
Certified

POWER CONVERTER SOCKETS FOR ABBOTT TECHNOLOGIES



***Largest Line of High Reliability Power Converter Sockets
with Hi-Rel Contacts***

www.andonelect.com or www.andonelectronics.com

ABBOTT TECHNOLOGIES						
Model Number	Andon Part Number Replace "XXX" with Terminal Type	Terminal Type		Pin Ø [in]	Figure Number	Page Number
		Thru-Hole	Surface Mount			
PSA-2	C10-1636-04-01-XXX-R27-L14	433E	285E	.040	7	2
TLA DUAL	R400-SP04-01N-XXX-R27-L14	505P72	506P72	.080	1	1
TLA SINGLE	R400-SP02-01N-XXX-R27-L14	505P72	506P72	.080	2	1
TLB DUAL	R600-SP04-01N-XXX-R27-L14	505P72	506P72	.080	3	1
TLB SINGLE	R600-SP02-01N-XXX-R27-L14	505P72	506P72	.080	4	1
TLC DUAL	R800-SP04-01N-XXX-R27-L14	505P72	506P72	.080	5	2
TLC SINGLE	R800-SP02-01N-XXX-R27-L14	505P72	506P72	.080	6	2

See last page for other mounting types including low profile options.
Heat sink socket available to reduce heat and noise. Contact Andon for details.

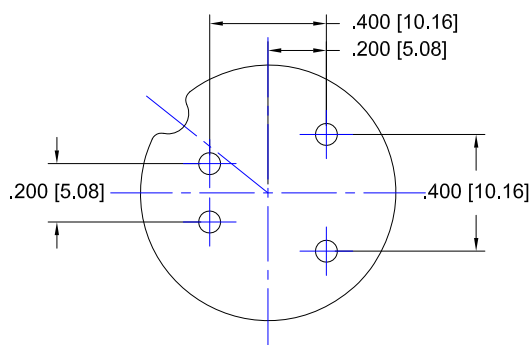


FIG. 1
Thru-Hole: R400-SP04-01N-505P72-R27-L14
Surface Mount: R400-SP04-01N-506P72-R27-L14

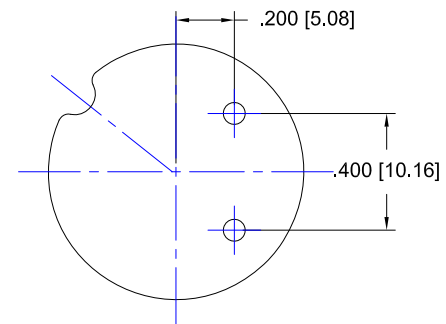


FIG. 2
Thru-Hole: R400-SP02-01N-505P72-R27-L14
Surface Mount: R400-SP02-01N-506P72-R27-L14

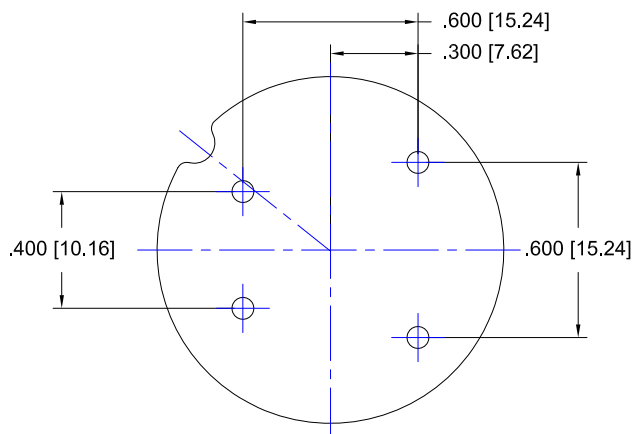


FIG. 3
Thru-Hole: R600-SP04-01N-505P72-R27-L14
Surface Mount: R600-SP04-01N-506P72-R27-L14

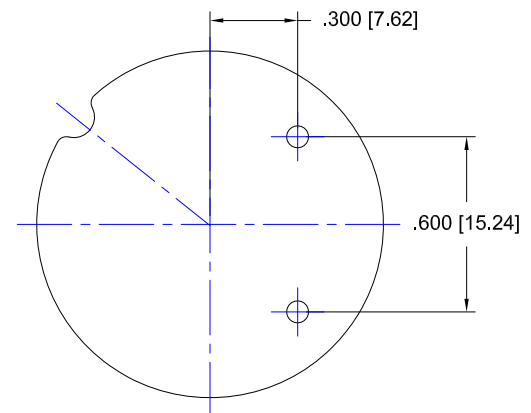


FIG. 4
Thru-Hole: R600-SP02-01N-505P72-R27-L14
Surface Mount: R600-SP02-01N-506P72-R27-L14

ABBOTT TECHNOLOGIES *Continued*

Top View Shown

Units: in [mm]

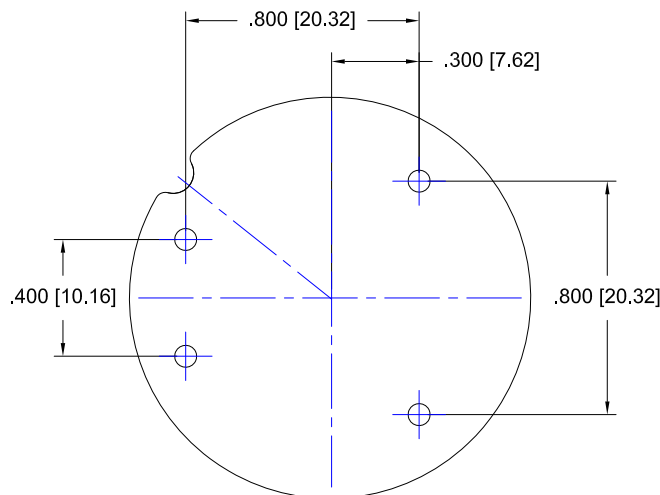


FIG. 5

Thru-Hole: R800-SP04-01N-505P72-R27-L14
Surface Mount: R800-SP04-01N-506P72-R27-L14

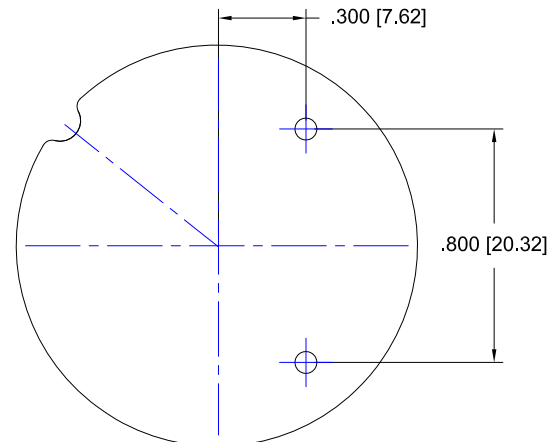


FIG. 6

Thru-Hole: R800-SP02-01N-505P72-R27-L14
Surface Mount: R800-SP02-01N-506P72-R27-L14

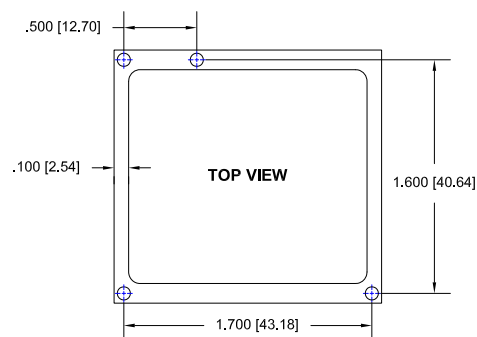


FIG. 7

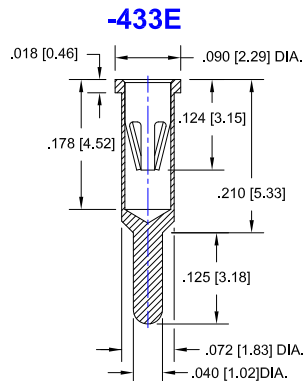
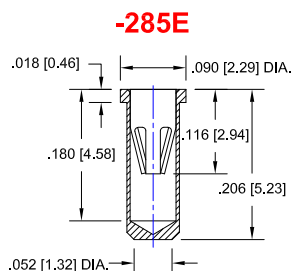
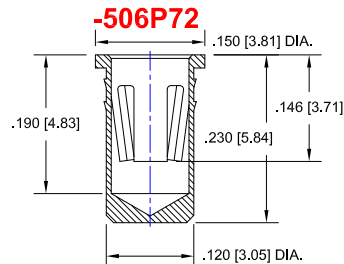
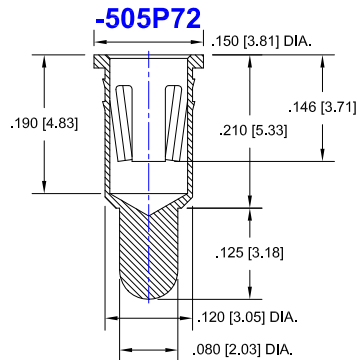
Thru-Hole: C10-1636-04-01-433E-R27-L14
Surface Mount: C10-1636-04-01-285E-R27-L14

ABBOTT TECHNOLOGIES *Continued*

Socket Terminal Details

Cross Section View Shown

Units: in [mm]



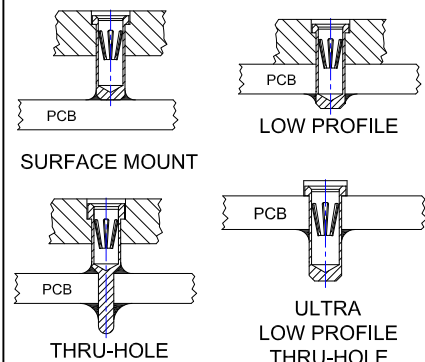
Material:

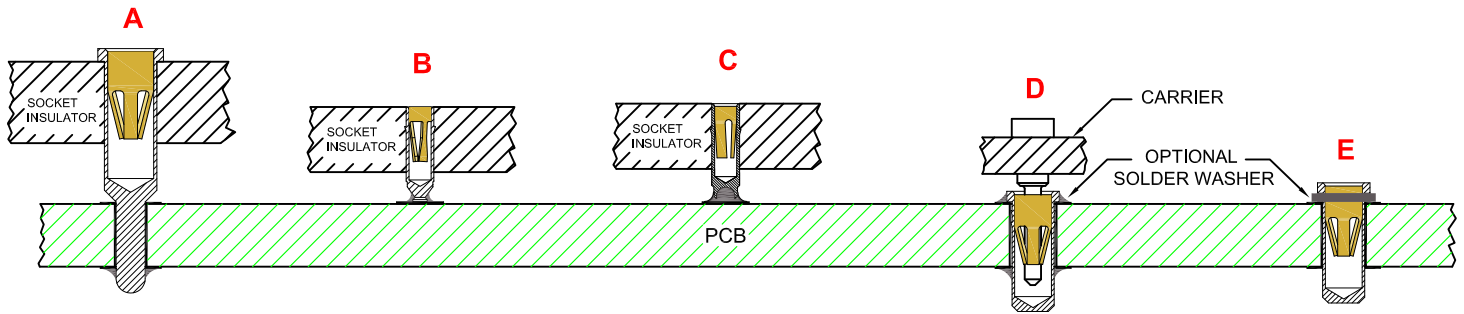
Insulator: Hi-Temp UL 94V-O
Terminal: Brass, per ASTM-B194
Contact: BeCu, Per ASTM-B194

Plating: RoHS COMPLIANT
R27 TERMINAL: GOLD / CONTACT: GOLD
R29 TERMINAL: TIN / CONTACT: GOLD
OTHER PLATINGS AVAILABLE

Terminal Acceptance and Forces							
Thru Hole Terminals				Surface Mount Terminals			
Thru Hole Terminal	Accepts Pin Diameter	Insertion Force	Withdrawal Force	Surface Mount Terminal	Accepts Pin Diameter	Insertion Force	Withdrawal Force
-433E	Ø.040 [Ø01.02]	36.0 oz Max	3.9 oz Min	-285E	Ø.040 [Ø01.02]	36.0 oz Max	3.9 oz Min
-505P72	Ø.080 [Ø02.03]	48.0 oz Max	8.0 oz Min	-506P72	Ø.080 [Ø02.03]	48.0 oz Max	8.0 oz Min

MOUNTING OPTIONS





**THRU-HOLE
SOCKET**

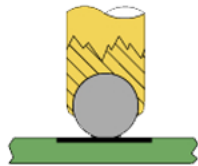
SMD-SOCKET

**SMD
ROLLERBALL®
SOCKET
(PATENTED)**

**REMOVABLE
CARRIER
WITH ULTRA-LOW
PROFILE PIN SOCKETS**

**INDIVIDUAL
ULTRA-LOW PROFILE
PIN SOCKETS
(BEFORE SOLDERING)**

**ROLLERBALL®
SOCKET**



BEFORE SOLDERING

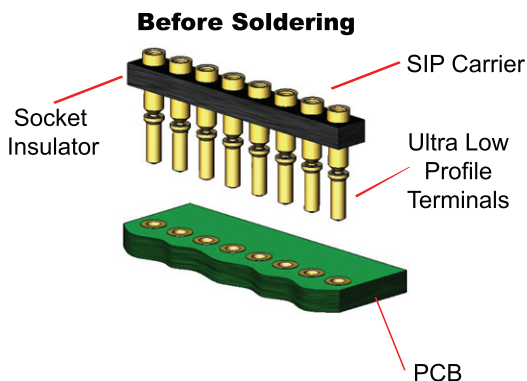
**ROLLERBALL®
SOCKET**



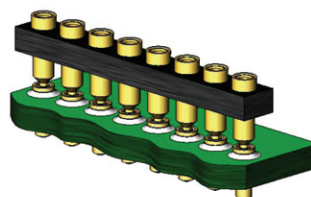
AFTER SOLDERING

A more reliable solder joint for surface mount applications !

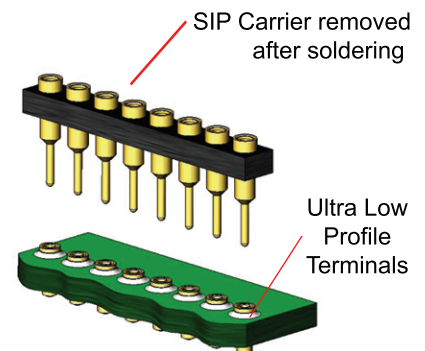
ULTRA LOW PROFILE SIP/DIP/PGA CARRIER ASSEMBLY See 'D' above



During Soldering



After Soldering



Available with or without solder washer