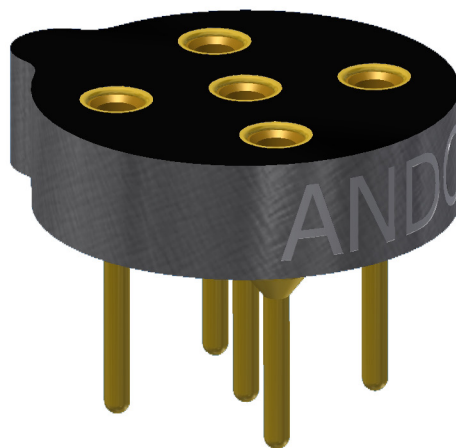




RoHS Compliant  
ISO 9001  
Certified

## ***POWER CONVERTER SOCKETS FOR TELEDYNE TECHNOLOGIES***



***Largest Line of High Reliability Power Converter Sockets  
with Hi-Rel Contacts***

TELEDYNE TECHNOLOGIES is a trade mark of TELEDYNE TECHNOLOGIES  
[www.andonelect.com](http://www.andonelect.com) or [www.andonelectronics.com](http://www.andonelectronics.com)

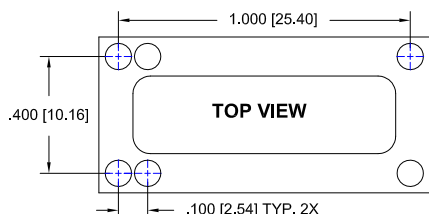
TELEDYNE TECHNOLOGIES						
Model Number	Andon Part Number Replace "XXX" with Terminal Type	Terminal Type		Pin Ø [in]	Figure Number	Page Number
		Thru-Hole	Surface Mount			
412DDV	R200-1008-01T-XXX-R27-L14	274K	281K	.018	16	4
412DV	R200-1008-01T-XXX-R27-L14	274K	281K	.018	16	4
412H	R200-1008-01T-XXX-R27-L14	274K	281K	.018	16	4
412V	R200-1008-01T-XXX-R27-L14	274K	281K	.018	16	4
422H	R200-1010-01T-XXX-R27-L14	274K	281K	.018	9	3
432DV	R200-1008-01T-XXX-R27-L14	274K	281K	.018	16	4
432H	R200-1008-01T-XXX-R27-L14	274K	281K	.018	16	4
432V	R200-1008-01T-XXX-R27-L14	274K	281K	.018	16	4
A150	R300-SP06-01T-XXX-R27-L14	75S	265S	.018	10	3
A152	R300-SP06-01T-XXX-R27-L14	75S	265S	.018	10	3
C46F	C10-314-04-02-XXX-R27-L14	01S	93S	.018	11	3
C47F	C10-314-04-02-XXX-R27-L14	01S	93S	.018	11	3
C75	C10-316-05-01-XXX-R27-L14	01S	93S	.018	17	4
CD SERIES	C10-408-06-01-XXX-R27-L14	01S	93S	.018	6	2
FR75-1	R300-SP04-01T-XXX-R27-L14	01S	93S	.018	12	3
GLB363	(2)R200-SP06-01T-XXX-R27-L14	211S	265S	.018	19	5
HR412/HRS412 SERIES	R200-1008-01T-XXX-R27-L14	274K	281K	.018	16	4
HR412K/HRS412K SERIES	R200-1008-01T-XXX-R27-L14	274K	281K	.018	16	4
HR412V/HRS412V SERIES	R200-1008-01T-XXX-R27-L14	274K	281K	.018	16	4
HR422/HRS422 SERIES	R200-1008-01T-XXX-R27-L14	274K	281K	.018	16	4
HR422K/HRS422K SERIES	R200-1008-01T-XXX-R27-L14	274K	281K	.018	16	4
K PACKAGE	C10-422-06-02-XXX-R27-L14	433E	285E	.040	3	2
KA SERIES	C10-422-06-01-XXX-R27-L14	433E	285E	.040	1	2
KD44CF	C10-422-06-02-XXX-R27-L14	433E	285E	.040	3	2
LA SERIES	C10-422-06-01-XXX-R27-L14	433E	285E	.040	1	2
LB363	(2)R200-SP06-01T-XXX-R27-L14	211S	265S	.018	19	5
LD	C10-422-06-02-XXX-R27-L14	433E	285E	.040	3	2
LD00KM	C10-422-06-02-XXX-R27-L14	433E	285E	.040	3	2
LD00KQ	C10-422-06-01-XXX-R27-L14	433E	285E	.040	1	2
M33-2N	C10-422-06-02-XXX-R27-L14	433E	285E	.040	3	2
QB00FM	C125-06-06-01-XXX-R27-L14	433E	285E	.040	13	4
RF100	R200-SP08-01T-XXX-R27-L14	75S	265S	.018	8	3
RF103	R200-SP08-01T-XXX-R27-L14	75S	265S	.018	8	3
RF121	R250-SP06-01T-XXX-R27-L14	75S	265S	.018	2	2
RF180	R300-SP10-01T-XXX-R27-L14	75S	265S	.018	7	3
RF255	(2)R200-SP05-01T-XXX-R27-L14	211S	265S	.018	4	2
RF257	(2)R200-SP05-01T-XXX-R27-L14	211S	265S	.018	4	2
RF311	R200-SP05-01T-XXX-R27-L14	211S	265S	.018	4	2
RF331	R200-SP05-01T-XXX-R27-L14	211S	265S	.018	4	2
RF424/RF424D	R200-1010-01T-XXX-R27-L14	274K	281K	.018	9	3
SERIES 682	C10-314-04-05-XXX-R27-L14	01S	93S	.018	5	2
SERIES FB	R300-SP06-01T-XXX-R27-L14	01S	93S	.018	15	2
SERIES HD	C10-314-06-06-XXX-R27-L14	01S	93S	.018	18	4
SERIES KD	C10-422-06-02-XXX-R27-L14	433E	285E	.040	3	2
SERIES RF300	R200-1008-01T-XXX-R27-L14	274K	281K	.018	16	4
SERIES RF303	R200-1008-01T-XXX-R27-L14	274K	281K	.018	16	4
SERIES RF310	R200-1008-01T-XXX-R27-L14	274K	281K	.018	16	4
SERIES RF312	R200-1008-01T-XXX-R27-L14	274K	281K	.018	16	4
SERIES RF313	R200-1008-01T-XXX-R27-L14	274K	281K	.018	16	4
SERIES RF320	R200-1008-01T-XXX-R27-L14	274K	281K	.018	16	4
SERIES RF323	R200-1008-01T-XXX-R27-L14	274K	281K	.018	16	4
SERIES RF332	R200-1008-01T-XXX-R27-L14	274K	281K	.018	16	4
SERIES RF341	R200-1007-01T-XXX-R27-L14	274K	281K	.018	14	4
SERIES RF700	R200-1008-01T-XXX-R27-L14	274K	281K	.018	16	4
SERIES RF703	R200-1008-01T-XXX-R27-L14	274K	281K	.018	16	4

See last page for other mounting types including low profile options.  
Heat sink socket available to reduce heat and noise. Contact Andon for details.

## TELEDYNE TECHNOLOGIES *Continued*

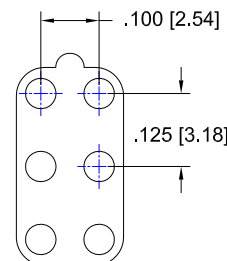
Top View Shown

Units: in [mm]



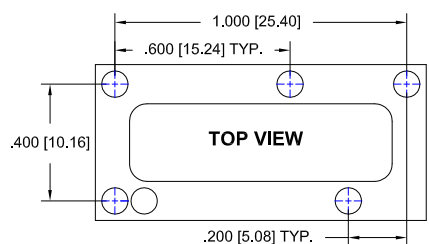
**FIG. 1**

Thru-Hole: C10-422-06-01-**433E**-R27-L14  
Surface Mount: C10-422-06-01-**285E**-R27-L14



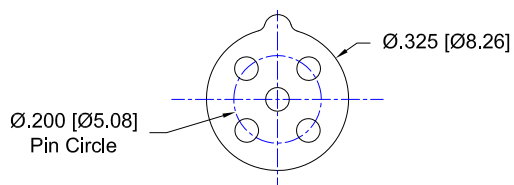
**FIG. 2**

Thru-Hole: R250-SP06-01T-**75S**-R27-L14  
Surface Mount: R250-SP06-01T-**265S**-R27-L14



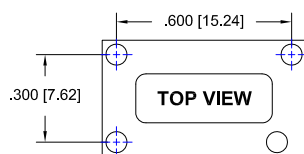
**FIG. 3**

Thru-Hole: C10-422-06-02-**433E**-R27-L14  
Surface Mount: C10-422-06-02-**285E**-R27-L14



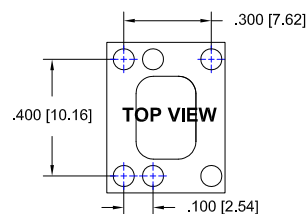
**FIG. 4**

Thru-Hole: R200-SP05-01T-**211S**-R27-L14  
Surface Mount: R200-SP05-01T-**265S**-R27-L14



**FIG. 5**

Thru-Hole: C10-314-04-05-**01S**-R27-L14  
Surface Mount: C10-314-04-05-**93S**-R27-L14



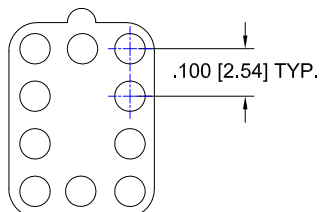
**FIG. 6**

Thru-Hole: C10-408-06-01-**01S**-R27-L14  
Surface Mount: C10-408-06-01-**93S**-R27-L14

## TELEDYNE TECHNOLOGIES *Continued*

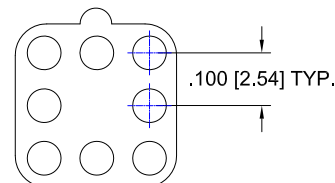
Top View Shown

Units: in [mm]



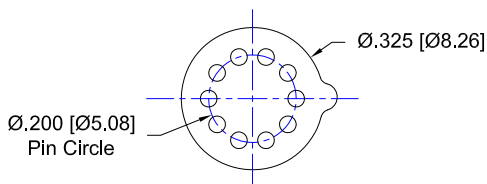
**FIG. 7**

Thru-Hole: R300-SP10-01T-**75S**-R27-L14  
Surface Mount: R300-SP10-01T-**265S**-R27-L14



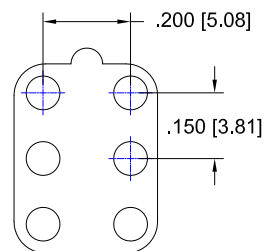
**FIG. 8**

Thru-Hole: R200-SP08-01T-**75S**-R27-L14  
Surface Mount: R200-SP08-01T-**265S**-R27-L14



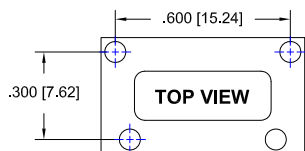
**FIG. 9**

Thru-Hole: R200-1010-01T-**274K**-R27-L14  
Surface Mount: R200-1010-01T-**281K**-R27-L14



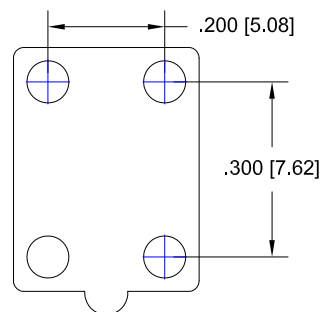
**FIG. 10**

Thru-Hole: R300-SP06-01T-**75S**-R27-L14  
Surface Mount: R300-SP06-01T-**265S**-R27-L14



**FIG. 11**

Thru-Hole: C10-314-04-02-**01S**-R27-L14  
Surface Mount: C10-314-04-02-**93S**-R27-L14



**FIG. 12**

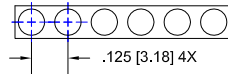
Thru-Hole: R300-SP04-01T-**01S**-R27-L14  
Surface Mount: R300-SP04-01T-**93S**-R27-L14



## TELEDYNE TECHNOLOGIES *Continued*

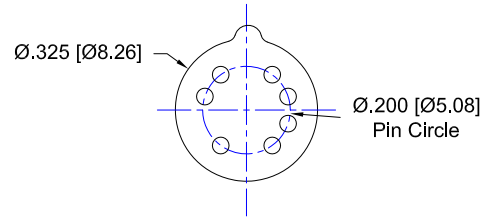
Top View Shown

Units: in [mm]



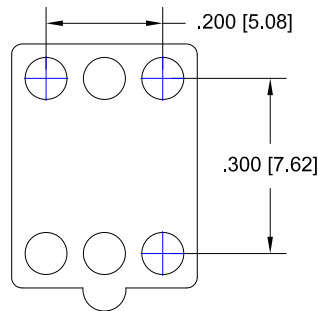
**FIG. 13**

Thru-Hole: C125-06-06-01-**433E**-R27-L14  
Surface Mount: C125-06-06-01-**285E**-R27-L14



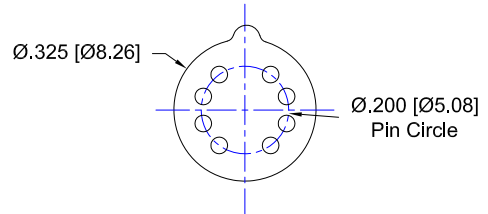
**FIG. 14**

Thru-Hole: R200-1007-01T-**274K**-R27-L14  
Surface Mount: R200-1007-01T-**281K**-R27-L14



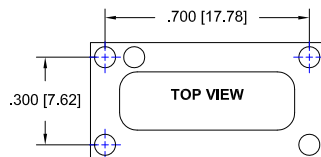
**FIG. 15**

Thru-Hole: R300-SP06-02T-**01S**-R27-L14  
Surface Mount: R300-SP06-02T-**93S**-R27-L14



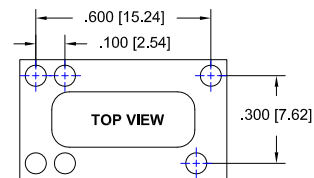
**FIG. 16**

Thru-Hole: R200-1008-01T-**274K**-R27-L14  
Surface Mount: R200-1008-01T-**281K**-R27-L14



**FIG. 17**

Thru-Hole: C10-316-05-01-**01S**-R27-L14  
Surface Mount: C10-316-05-01-**93S**-R27-L14



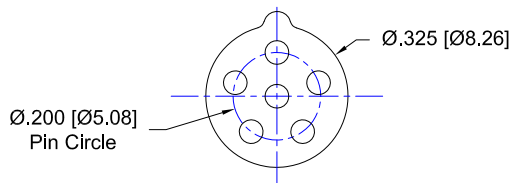
**FIG. 18**

Thru-Hole: C10-314-06-06-**01S**-R27-L14  
Surface Mount: C10-314-06-06-**93S**-R27-L14

**TELEDYNE TECHNOLOGIES** *Continued*

**Top View Shown**

**Units: in [mm]**



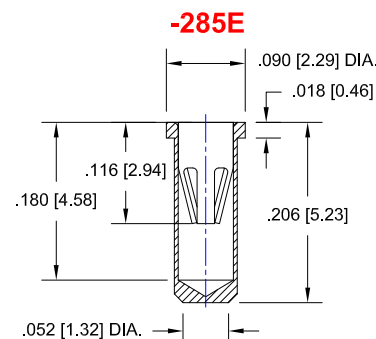
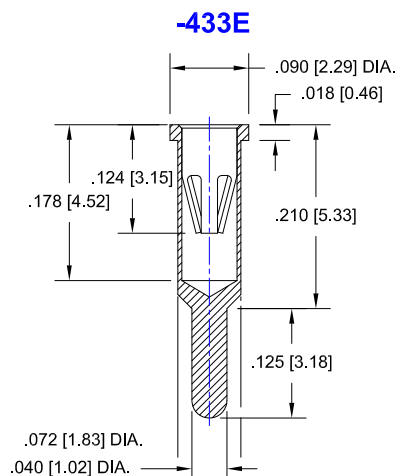
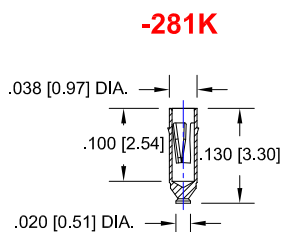
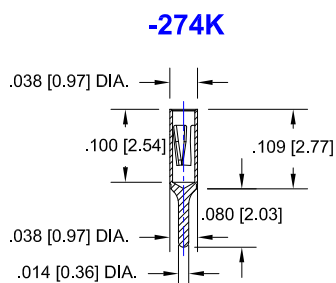
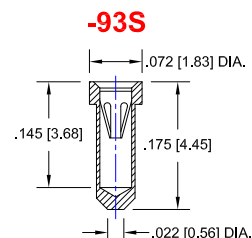
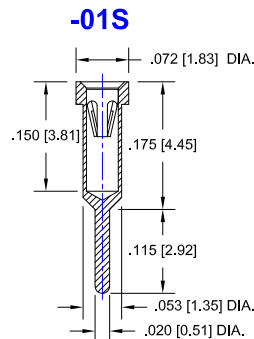
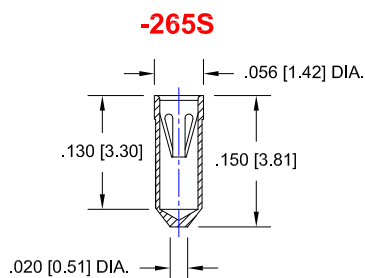
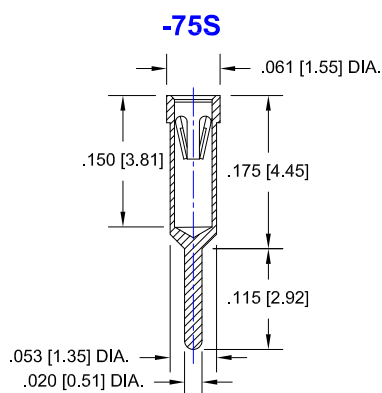
**FIG. 19**

**Thru-Hole:** R200-SP06-01T-**211S**-R27-L14

**Surface Mount:** R200-SP06-01T-**265S**-R27-L14

## TELEDYNE TECHNOLOGIES *Continued*

### Socket Terminal Details Cross Section View Shown Units: in [mm]



## Technical Information

### Material:

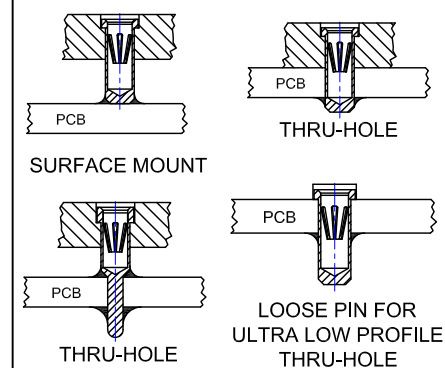
Insulator: Hi-Temp UL 94V-O  
Terminal: Brass, per ASTM-B16  
Contact: BeCu, Per ASTM-B194

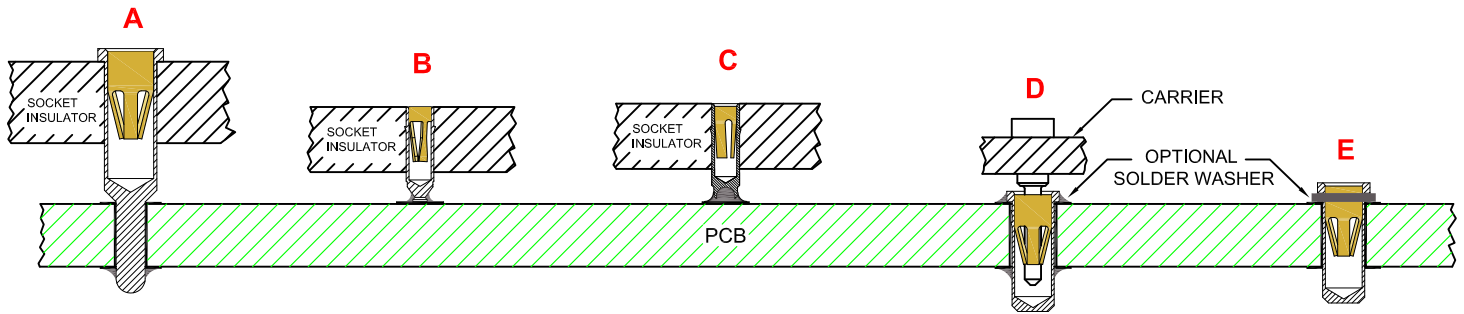
**Plating: RoHS COMPLIANT**  
**R27 TERMINAL: GOLD / CONTACT: GOLD**  
**OTHER PLATINGS AVAILABLE**

### Terminal Acceptance and Forces

Thru Hole Terminals				Surface Mount Terminals			
Thru Hole Terminal	Accepts Pin Diameter	Insertion Force	Withdrawal Force	Surface Mount Terminal	Accepts Pin Diameter	Insertion Force	Withdrawal Force
<b>-01S</b>	Ø.018 [Ø0.46]	9.0 oz Avg.	2.0 oz Min	<b>-93S</b>	Ø.018 [Ø0.46]	9.0 oz Avg.	2.0 oz Min
<b>-274K</b>	Ø.018 [Ø0.46]	1.0 oz Max	0.5 oz Min	<b>-281K</b>	Ø.018 [Ø0.46]	1.0 oz Max	0.5 oz Min
<b>-75S</b>	Ø.018 [Ø0.46]	9.0 oz Avg.	2.0 oz Min	<b>-265S</b>	Ø.018 [Ø0.46]	9.0 oz Avg.	2.0 oz Min
<b>-211S</b>	Ø.018 [Ø0.46]	9.0 oz Avg.	2.0 oz Min	<b>-384S</b>	Ø.018 [Ø0.46]	9.0 oz Avg.	2.0 oz Min
<b>-433E</b>	Ø.040 [Ø1.02]	36.0 oz Avg.	3.9 oz Min	<b>-285E</b>	Ø.040 [Ø1.02]	36.0 oz Avg.	3.9 oz Min

### MOUNTING OPTIONS





**THRU-HOLE  
SOCKET**

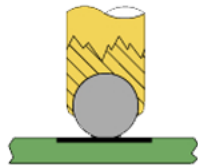
**SMD-SOCKET**

**SMD  
ROLLERBALL®  
SOCKET  
(PATENTED)**

**REMOVABLE  
CARRIER  
WITH ULTRA-LOW  
PROFILE PIN SOCKETS**

**INDIVIDUAL  
ULTRA-LOW PROFILE  
PIN SOCKETS  
(BEFORE SOLDERING)**

**ROLLERBALL®  
SOCKET**



**BEFORE SOLDERING**

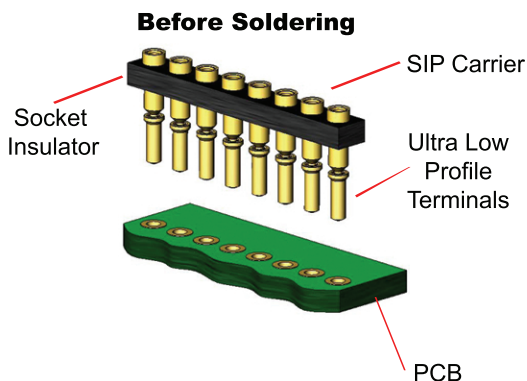
**ROLLERBALL®  
SOCKET**



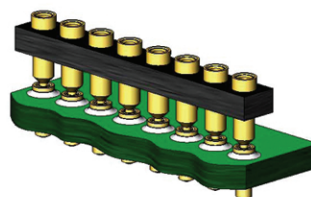
**AFTER SOLDERING**

**A more reliable solder joint for surface mount applications !**

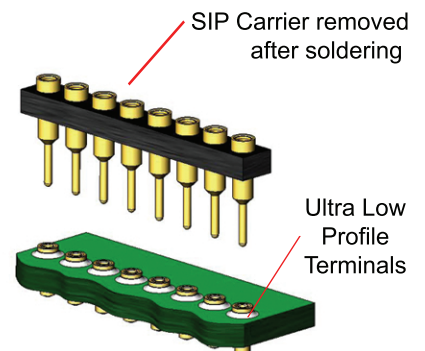
**ULTRA LOW PROFILE SIP/DIP/PGA CARRIER ASSEMBLY See 'D' above**



**During Soldering**



**After Soldering**



**Available with or without solder washer**