

ILSI AMERICA LLC						
ILSI AMERICA LLC Model Number	Andon Part Number Replace "XXX" with Terminal Type	Terminal Type		Pin Ø [in]	Figure Number	Page Number
		Thru-Hole	Surface Mount			
39 SERIES	R043-02-02-01-XXX-R27-L14	400T4	414T4	.012	10	2
ZTT-MG	C10-003-03-01-XXX-R27-L14	01S	93S	.018	7	2
ZTT-MT/MX	C10-003-03-01-XXX-R27-L14	01S	93S	.018	7	2
ZTA-MG	C20-002-02-02-XXX-R27-L14	01S	93S	.018	9	2
ZTA-MT/MX	C20-002-02-02-XXX-R27-L14	01S	93S	.018	9	2
HC49U SERIES	C20-002-02-02-XXX-R27-L14	01S	93S	.018	9	2
HC49US SERIES	C20-002-02-02-XXX-R27-L14	01S	93S	.018	9	2
UM1/UM4/UM5 SERIES	C15-02-02-02-XXX-R27-L14	400T4	414T4	.012	8	2
I203 SERIES	C10-314-04-04-XXX-R27-L14	436P55	440P55	.060	1	1
I213 SERIES	C10-314-04-04-XXX-R27-L14	436P55	440P55	.060	1	1
I401 SERIES	C10-314-04-04-XXX-R27-L14	436P55	440P55	.060	1	1
HCOF/HCOH SERIES	C10-314-04-04-XXX-R27-L14	436P55	440P55	.060	1	1
I202 SERIES	C10-308-04-03-XXX-R27-L14	01S	93S	.018	2	1
I212 SERIES	C10-308-04-03-XXX-R27-L14	01S	93S	.018	2	1
I405 SERIES	C10-1014-05-02-XXX-R27-L14	295V	439V	.030	6	2
I408 SERIES	CSP739-05-01-XXX-R27-L14	295V	439V	.030	3	1
I411 SERIES	C10-614-05-01-XXX-R27-L14	01S	93S	.018	5	2

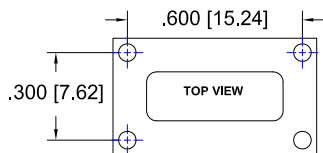


Fig.1

Thru-Hole: C10-314-04-04-436P55-R27-L14
Surface Mount: C10-314-04-04-440P55-R27-L14

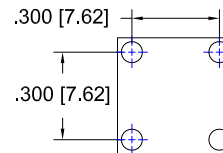


Fig.2

Thru-Hole: C10-308-04-03-01S-R27-L14
Surface Mount: C10-308-04-03-93S-R27-L14

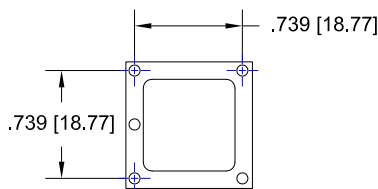


Fig.3

Thru-Hole: CSP739-05-01-295V-R27-L14
Surface Mount: CSP739-05-01-439V-R27-L14

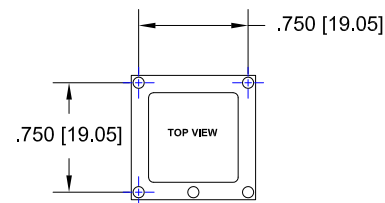


Fig.4

Thru-Hole: C10-7524-05-01-01S-R27-L14
Surface Mount: C10-7524-05-01-93S-R27-L14

ILSI AMERICA LLC *Continued*

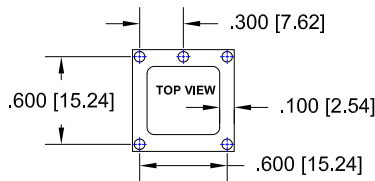


Fig.5
Thru-Hole: C10-614-05-01-01S-R27-L14
Surface Mount: C10-614-05-01-93S-R27-L14

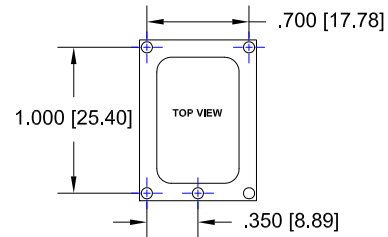


Fig.6
Thru-Hole: C10-1014-05-02-295V-R27-L14
Surface Mount: C10-1014-05-02-439V-R27-L14

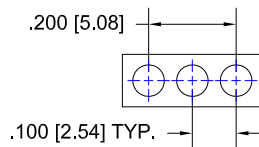


Fig.7
Thru-Hole: C10-003-03-01-01S-R27-L14
Surface Mount: C10-003-03-01-93S-R27-L14

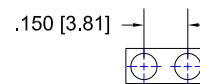


Fig.8
Thru-Hole: C15-02-02-02-400T4-R27-L14
Surface Mount: C15-02-02-02-414T4-R27-L14

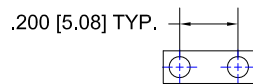


Fig.9
Thru-Hole: (4) C20-002-02-02-01S-R27-L14
Surface Mount: (4) C20-002-02-02-93S-R27-L14

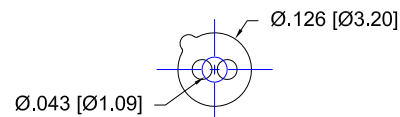
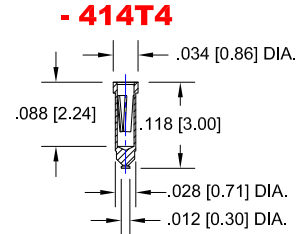
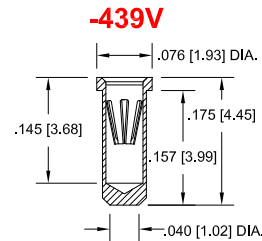
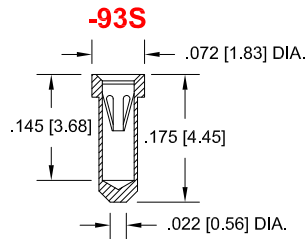
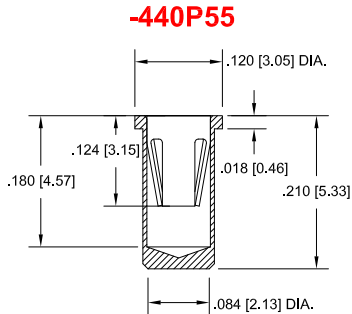
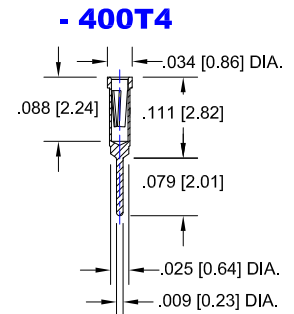
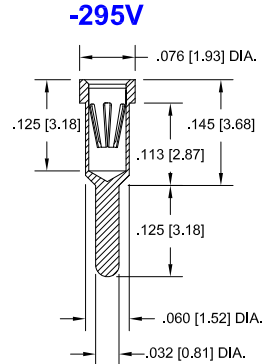
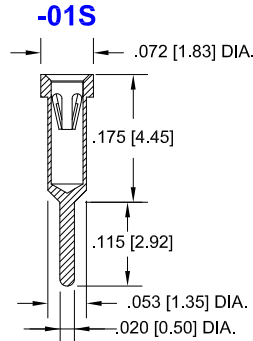
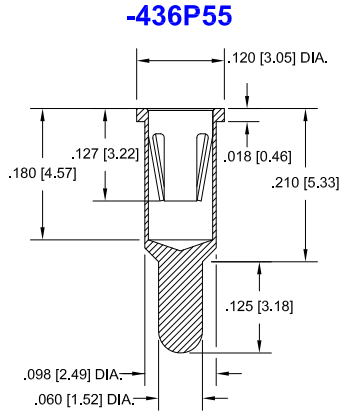


Fig.10
Thru-Hole: R043-02-02-01-400T4-R27-L14
Surface Mount: R043-02-02-01-414T4-R27-L14

ILSI AMERICA LLC *Continued*

Socket Terminal Details *Cross Section View Shown Units: in [mm]*



Technical Information

Material:

Insulator: Hi-Temp UL 94V-O
Terminal: Brass, per ASTM-B16
Contact: BeCu, Per ASTM-B194

Plating: RoHS COMPLIANT

R15 TERMINAL: GOLD / CONTACT: GOLD

R17 TERMINAL: TIN / CONTACT: GOLD

OTHER PLATINGS AVAILABLE

Terminal Acceptance and Forces

Thru Hole Terminals				Surface Mount Terminals			
Thru Hole Terminal	Accepts Pin Diameter	Insertion Force	Withdrawal Force	Surface Mount Terminal	Accepts Pin Diameter	Insertion Force	Withdrawal Force
-01S	Ø.018 [Ø0.46]	9.0 oz Avg.	2.0 oz Min	-285E	Ø.018 [Ø0.46]	9.0 oz Avg.	2.0 oz Min
-436P55	Ø.060 [Ø1.52]	15.5 oz Avg.	2.1 oz Min	-440P55	Ø.060 [Ø1.52]	15.5 oz Avg.	2.1 oz Min
-295V	Ø.030 [Ø0.76]	13.2 oz Avg.	3.5 oz Min	-439V	Ø.030 [Ø0.76]	13.2 oz Avg.	3.5 oz Min
-400T4	Ø.012 [Ø0.30]	1.1 oz Avg.	0.3 oz Min	-414T4	Ø.012 [Ø0.30]	1.1 oz Avg.	0.3 oz Min

MOUNTING OPTIONS

